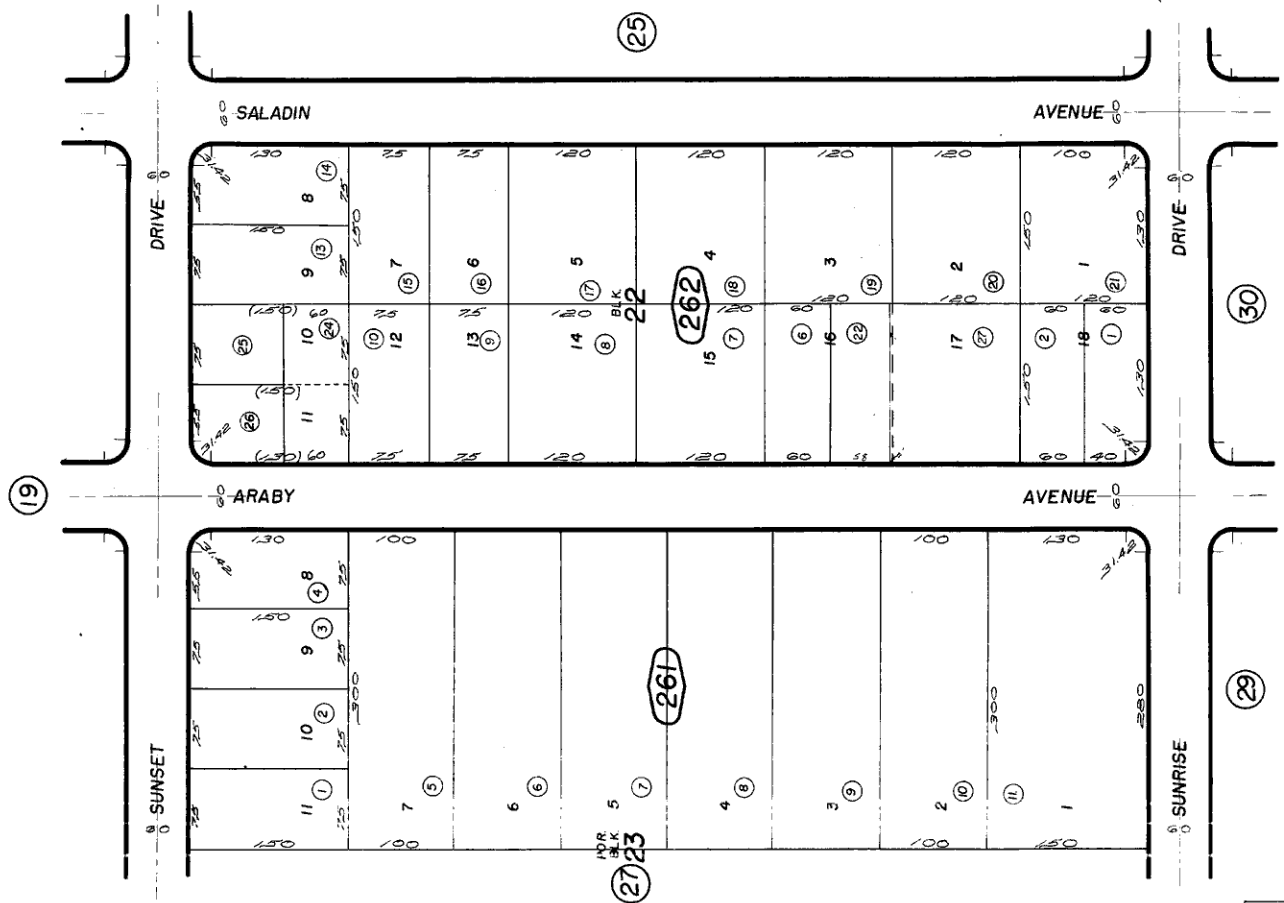




Por. Twentynine Palms "Desert Home" Subdivision, Unit No.1, Tract No. 2504
M. B. 36/2,3

City of Twentynine Palms 590-26
Tax Rate Area
19001



Note-Assessor's Blk. & Lot
Numbers Shown in Circles

Assessor's Map
Book 590 Page 26
San Bernardino County

REVISED	
1-11-68	
9/23/69	M.H.
1/18/82	GH
5/20/88	RM
03/20/92	NF
4/28/92	AGS
6/21/94	RM

July 1960