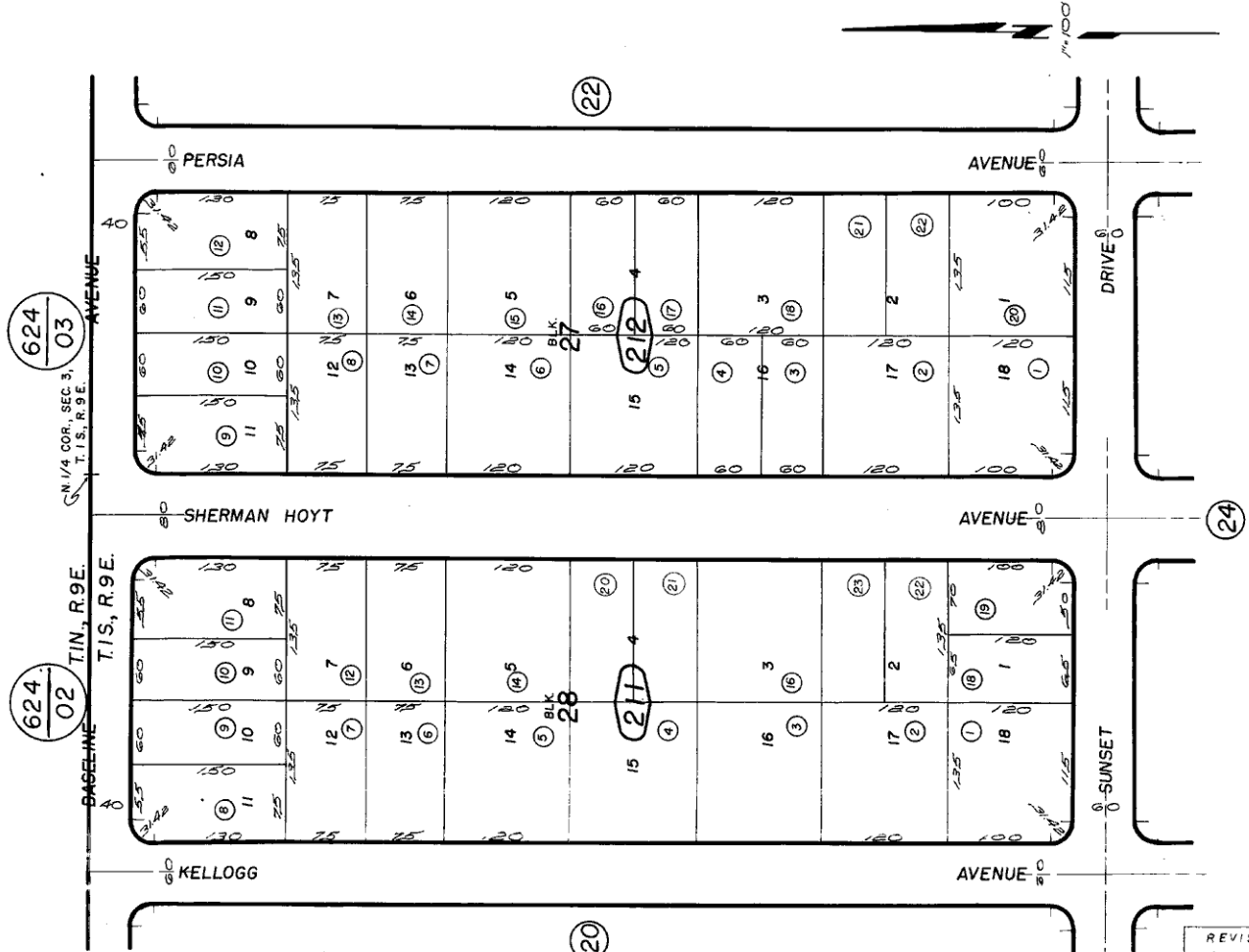




Por. Twentynine Palms "Desert Home" Subdivision, Unit No. 1, Tract No. 2504
M.B. 36/2,3

City of Twentynine Palms 590-21
Tax Rate Area
19001



July 1960

Note-Assessor's Blk. & Lot
Numbers Shown in Circles

Assessor's Map
Book 590 Page 21
San Bernardino County

REVISED
1-15-88
5/20/88 RM
6/21/94 RM