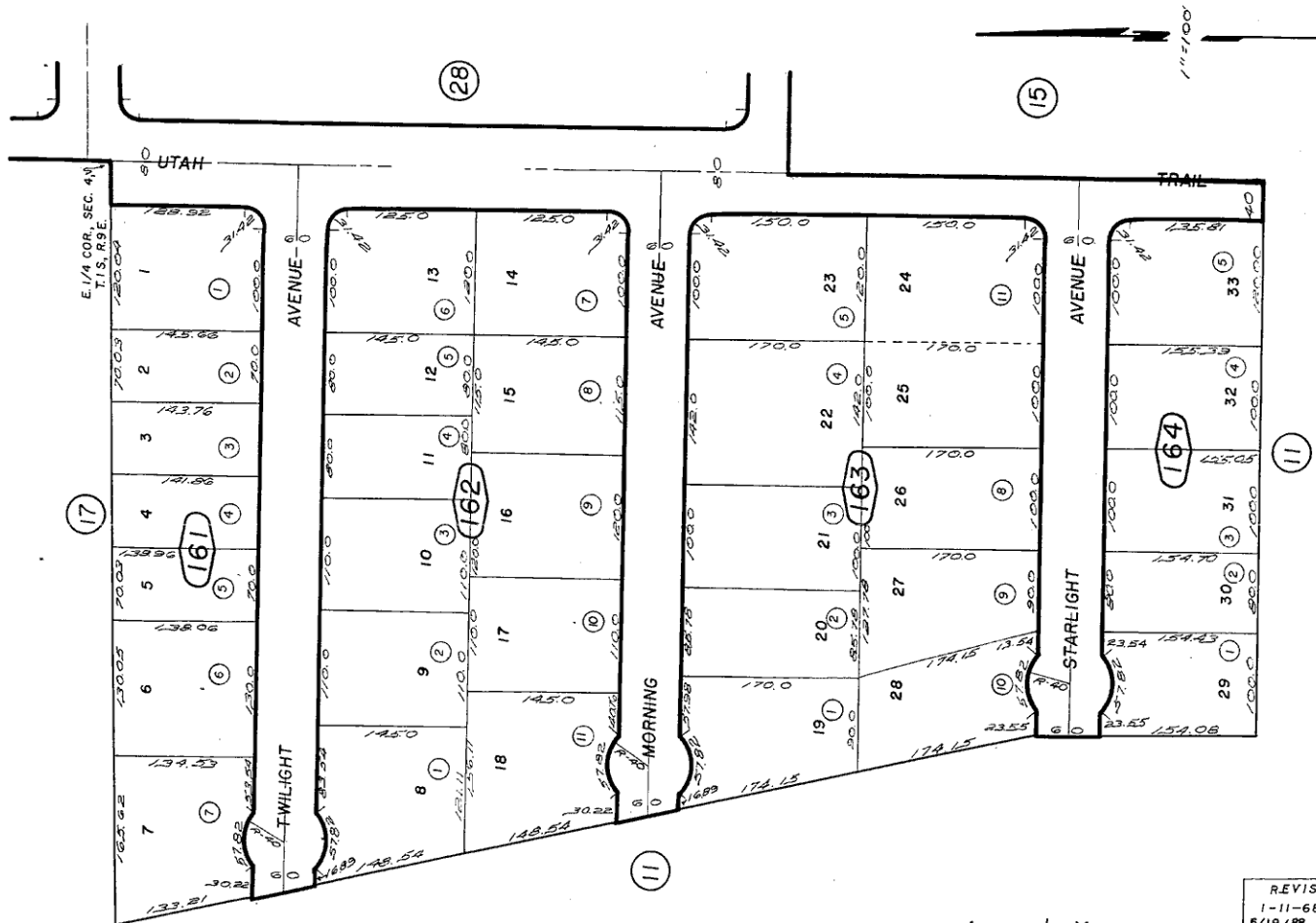




Marigold Estates, Tract No. 3323
M.B. 44/51

City of Twentynine Palms 590-16
Tax Rate Area
19001



June 1960

Note-Assessor's Blk. & Lot
Numbers Shown in Circles

Assessor's Map
Book 590 Page 16
San Bernardino County

REVISED
1-11-68
5/19/88
6/21/94 RM
12/30/98 KD