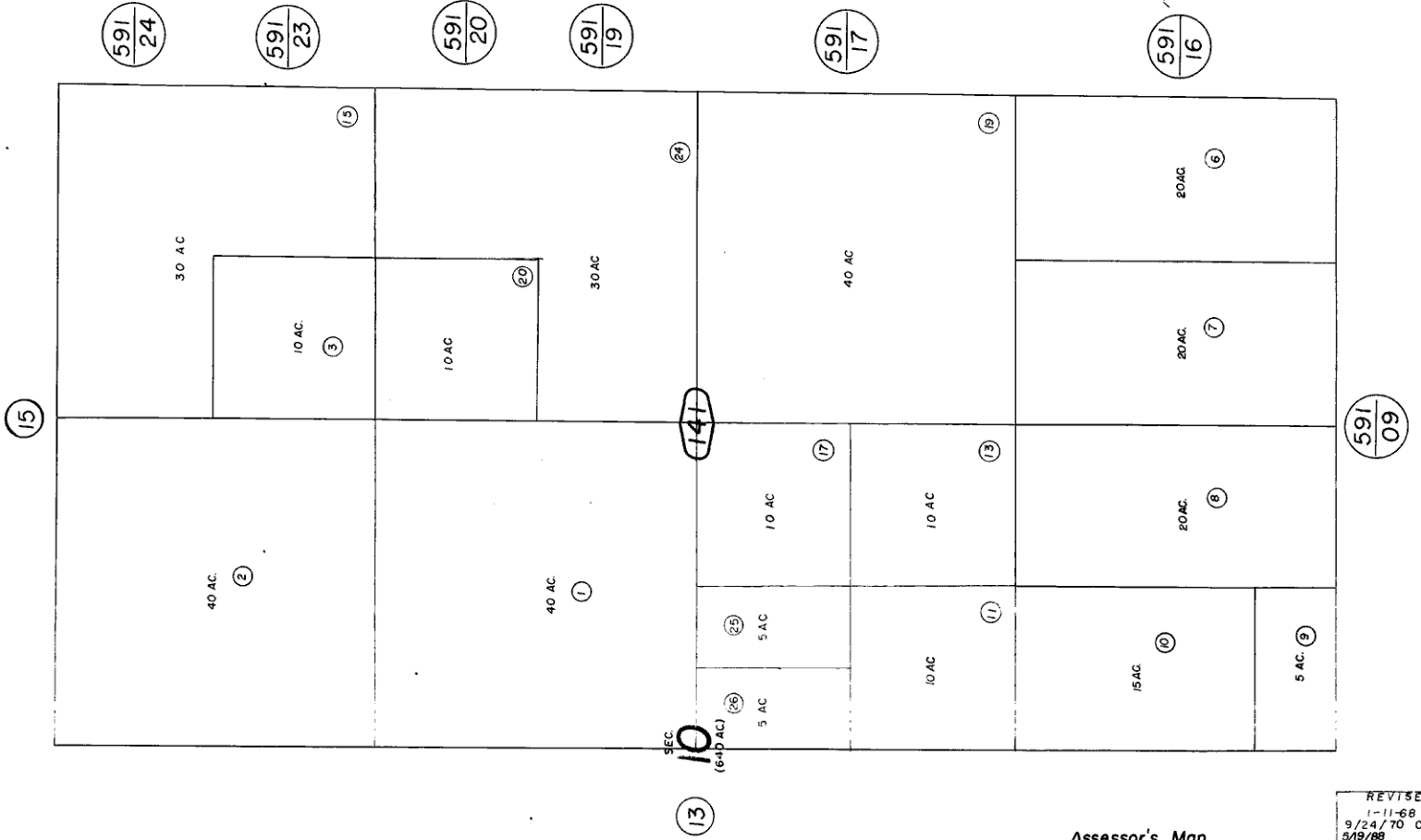
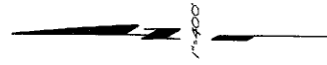




E. 1/2, Sec. 10, T.1S, R.9E., S.B.B.&M.

City of Twentynine Palms 590-14
Tax Rate Area
19001



July 1960

Note-Assessor's Blk. & Lot
Numbers Shown in Circles

Assessor's Map
Book 590 Page 14
San Bernardino County

REVISED
1-11-68
9/24/70 C.A.
5/19/88 RM
12/23/91 GP
6/21/94 RM