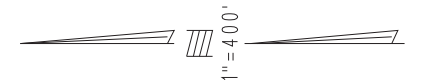


THIS MAP IS FOR THE PURPOSE
OF AD VALOREM TAXATION ONLY.

Ptn. E.1/2, Fractional Sec.4, T.1S.,R.9E., S.B.B.&M.

City of Twentynine Palms
Tax Rate Area
19001

0590-11



0617
17

T.1N., R.9E.
T.1S., R.9E.

Ptn. G.L.2
(40.23 AC.)

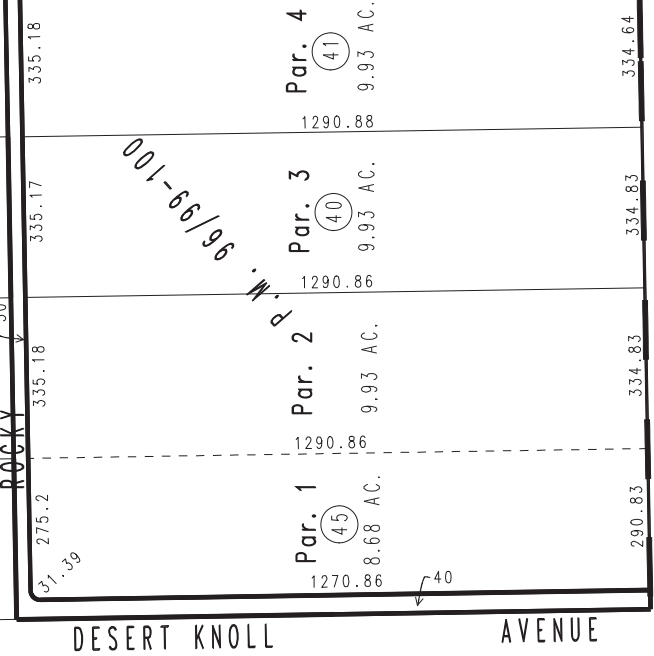
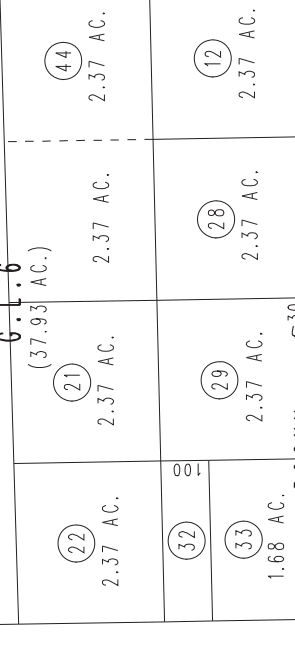
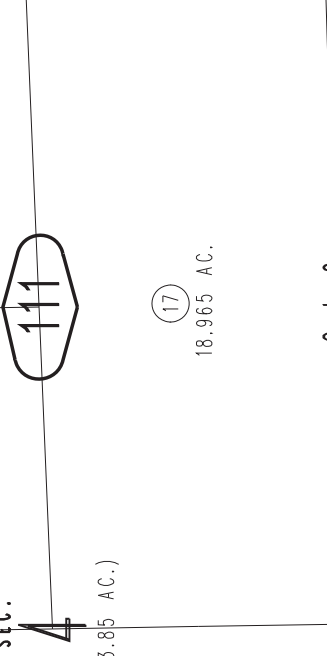
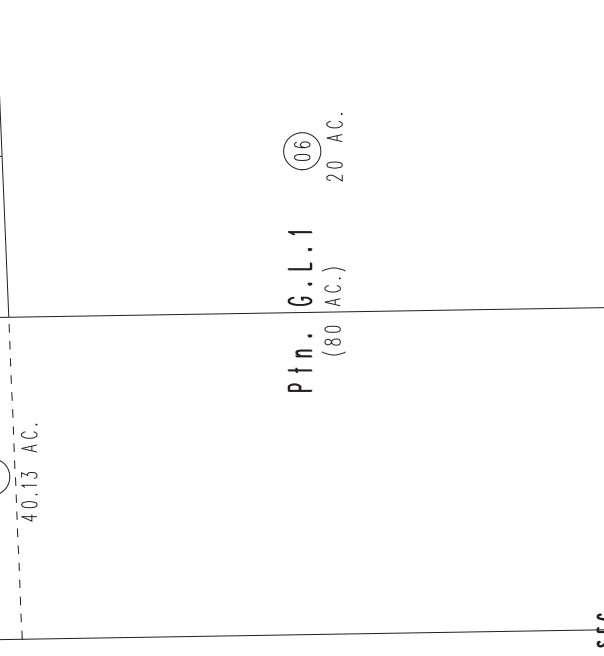
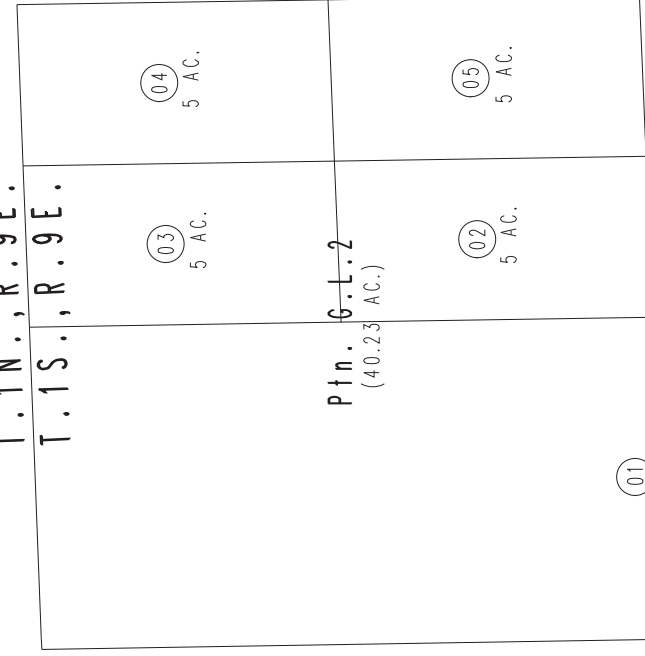
Ptn. G.L.1
(80 AC.)

G.L.6
(37.93 AC.)

Ptn. G.L.5
(38.9 AC.)

Par. 1 42 1.90 AC.
Par. 2 43 1.94 AC.

Par. 1 45 8.68 AC.
Par. 2 40 9.93 AC.
Par. 3 40 9.93 AC.
Par. 4 41 9.93 AC.



17

16

15

12

08

09

10