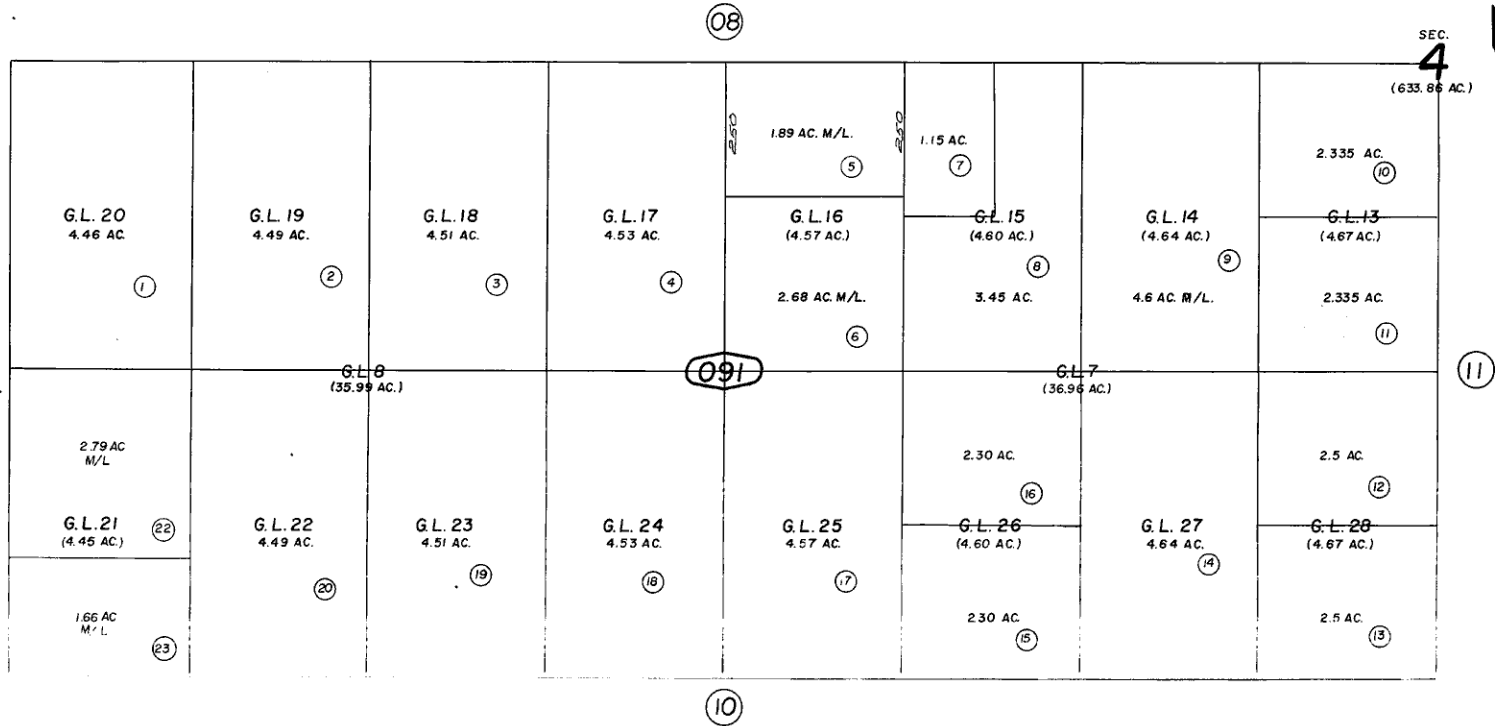




N.1/2, SW.1/4, Fractional Sec. 4, T.1S., R.9E., S.B.B.&M.

City of Twentynine Palms 590-09
Tax Rate Area
19001



Note-Assessor's Blk. & Lot
Numbers Shown in Circles

Assessor's Map
Book 590 Page 09
San Bernardino County

REVISED
1-11-68
5/19/88 RM
6/21/94 RM