

THIS MAP IS FOR THE PURPOSE
OF AD VALOREM TAXATION ONLY.

Sec.28,29,32&33 & Fractional Sec.30&31, T.1S.,R.7E., S.B.B.&M.

Morongo Unified
Tax Rate Area
94102

0589-24

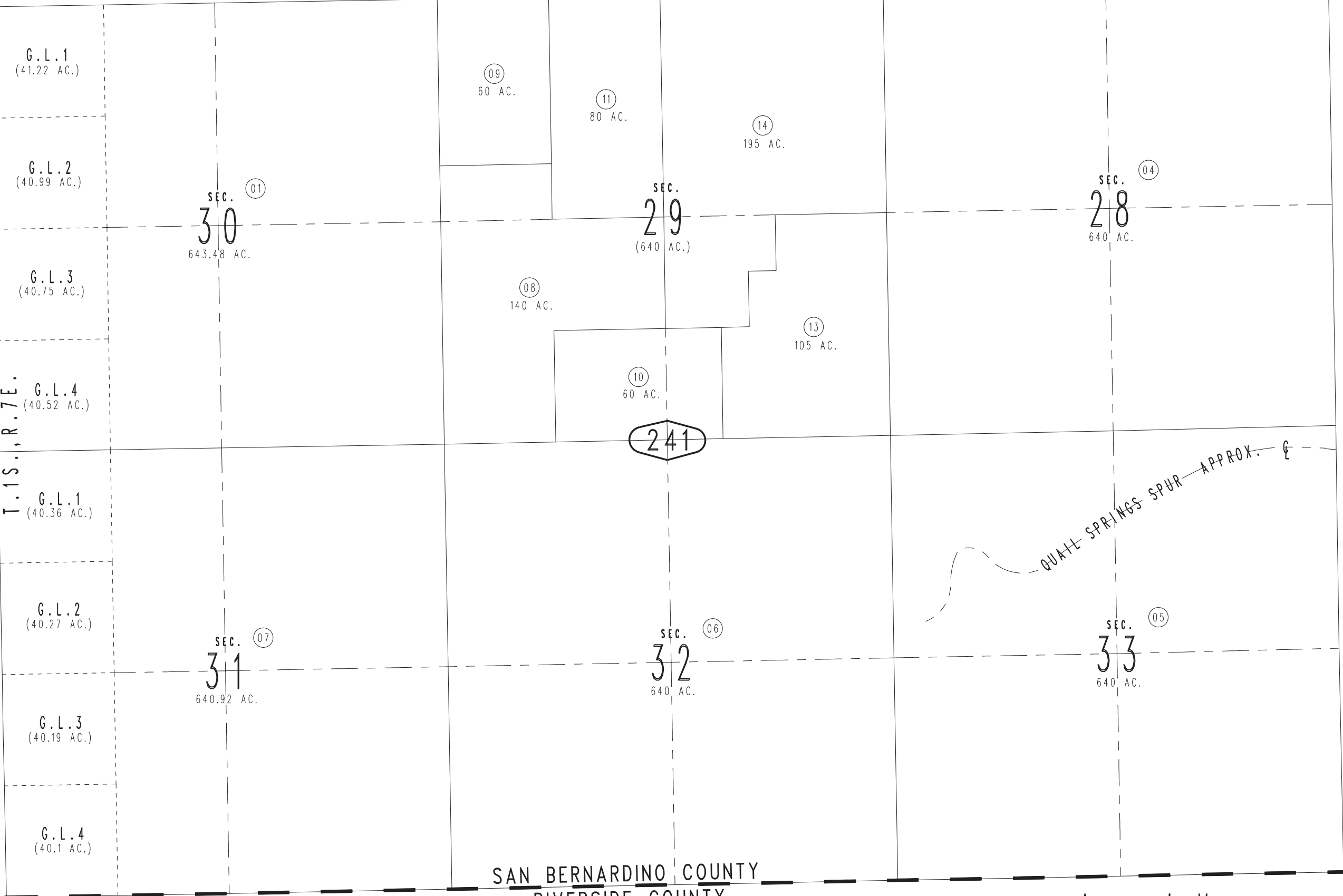


23



07

T.1S., R.6E.
T.1S., R.7E.



26

25

26

SAN BERNARDINO COUNTY
RIVERSIDE COUNTY

Assessor's Map
Book 0589 Page 24
San Bernardino County

REVISED