

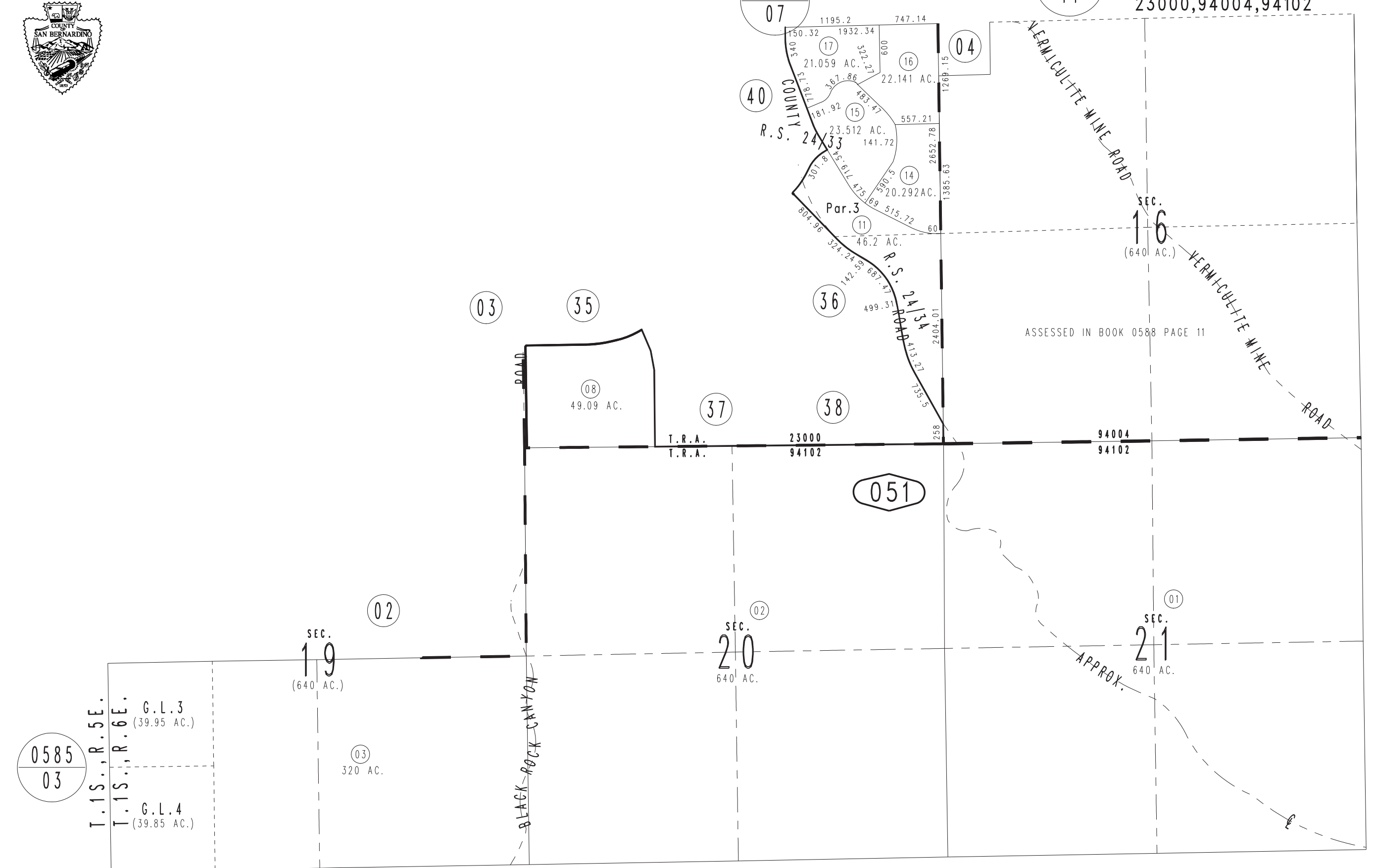
THIS MAP IS FOR THE PURPOSE OF AD VALOREM TAXATION ONLY.



Ptn. Sec.17, Sec.20,21 & S.1/2 Sec.16&19, T.1S.,R.6E., S.B.B.&M.

Town of Yucca Valley 0589-05
Morongo Unified
Tax Rate Area
23000,94004,94102

0588
07
0588
11



0585
03

T.1S.,R.5E.
T.1S.,R.6E.
G.L.3
(39.95 AC.)
G.L.4
(39.85 AC.)

SEC. 19
(640 AC.)

03
320 AC.

BLACK ROCK CANYON

T.R.A. 23000
T.R.A. 94102

051

SEC. 20
640 AC.

SEC. 21
640 AC.

APPROX.

ASSESSED IN BOOK 0588 PAGE 11