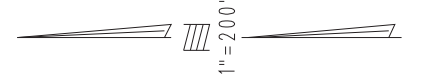


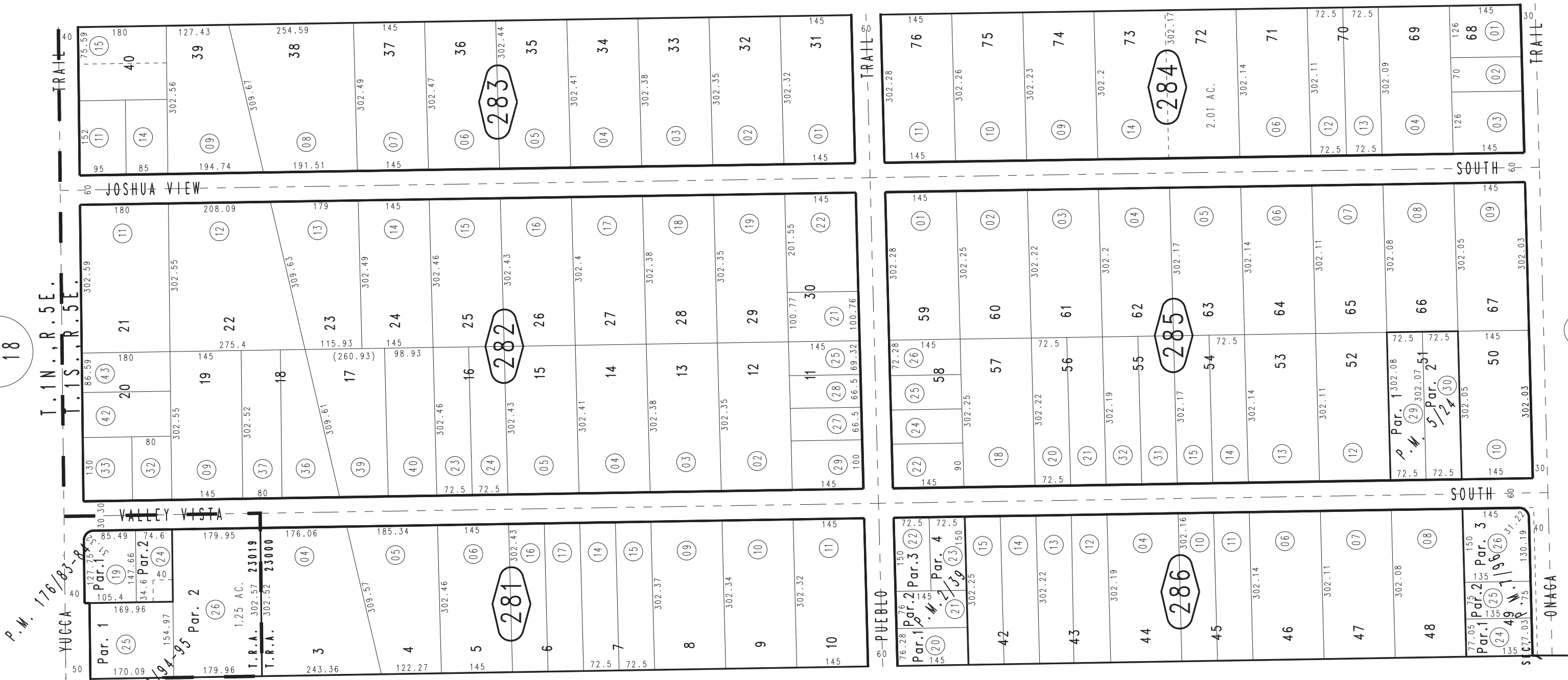
THIS MAP IS FOR THE PURPOSE OF AD VALOREM TAXATION ONLY.

Ptn. Yucca Corral Acres, Tract No. 3426 M.B. 45/70

Town of Yucca Valley 0587-28
Tax Rate Area
23000,23019



0595
18



0595
18

0595
18

February 2005
 Ptn. Parcel Map No. 14602, P.M. 176/83-84
 Parcel Map No. 828, P.M. 7/96
 Parcel Map No. 542, P.M. 5/24
 Parcel Map No. 205, P.M. 2/39

Parcel Map No. 18009, P.M. 232/94-95

Ptn. N.E.1/4, Fract. Sec.1
T.1S.,R.5E.

Assessor's Map
 Book 0587 Page 28
 San Bernardino County

REVISED
12/20/23 KA