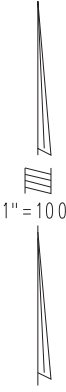
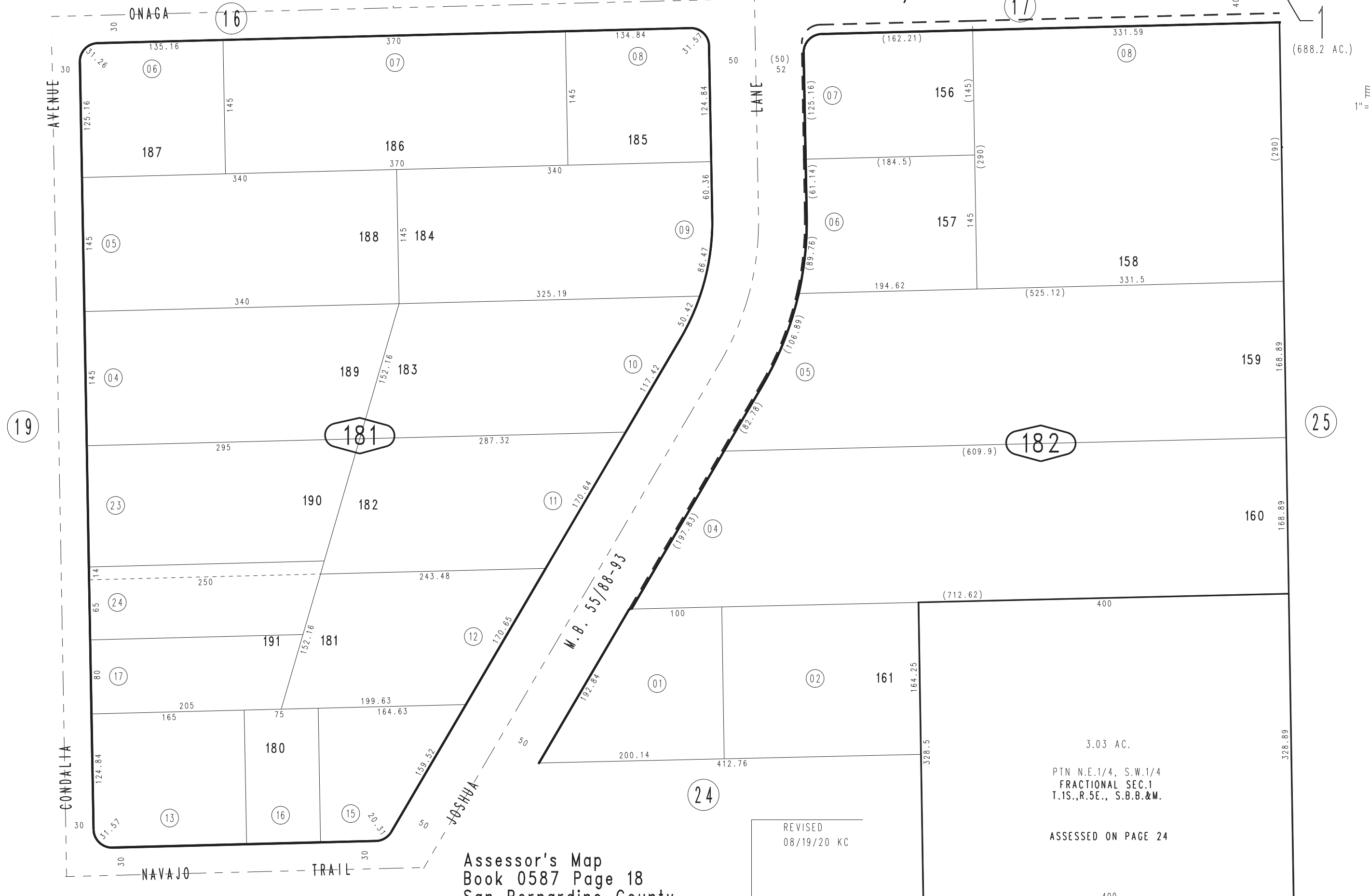


THIS MAP IS FOR THE PURPOSE OF AD VALOREM TAXATION ONLY.



Ptn. S.W.1/4 Fractional Sec.1, T.1S.,R.5E., S.B.B.&M.
Ptn. Joshua Forest Estates No. 1, Tract No. 4336, M.B. 55/88-93

Town of Yucca Valley 0587-18
Tax Rate Area 23000



Assessor's Map
Book 0587 Page 18
San Bernardino County

REVISED
08/19/20 KC

3.03 AC.
PTN N.E.1/4, S.W.1/4
FRACTIONAL SEC.1
T.1S.,R.5E., S.B.B.&M.
ASSESSED ON PAGE 24