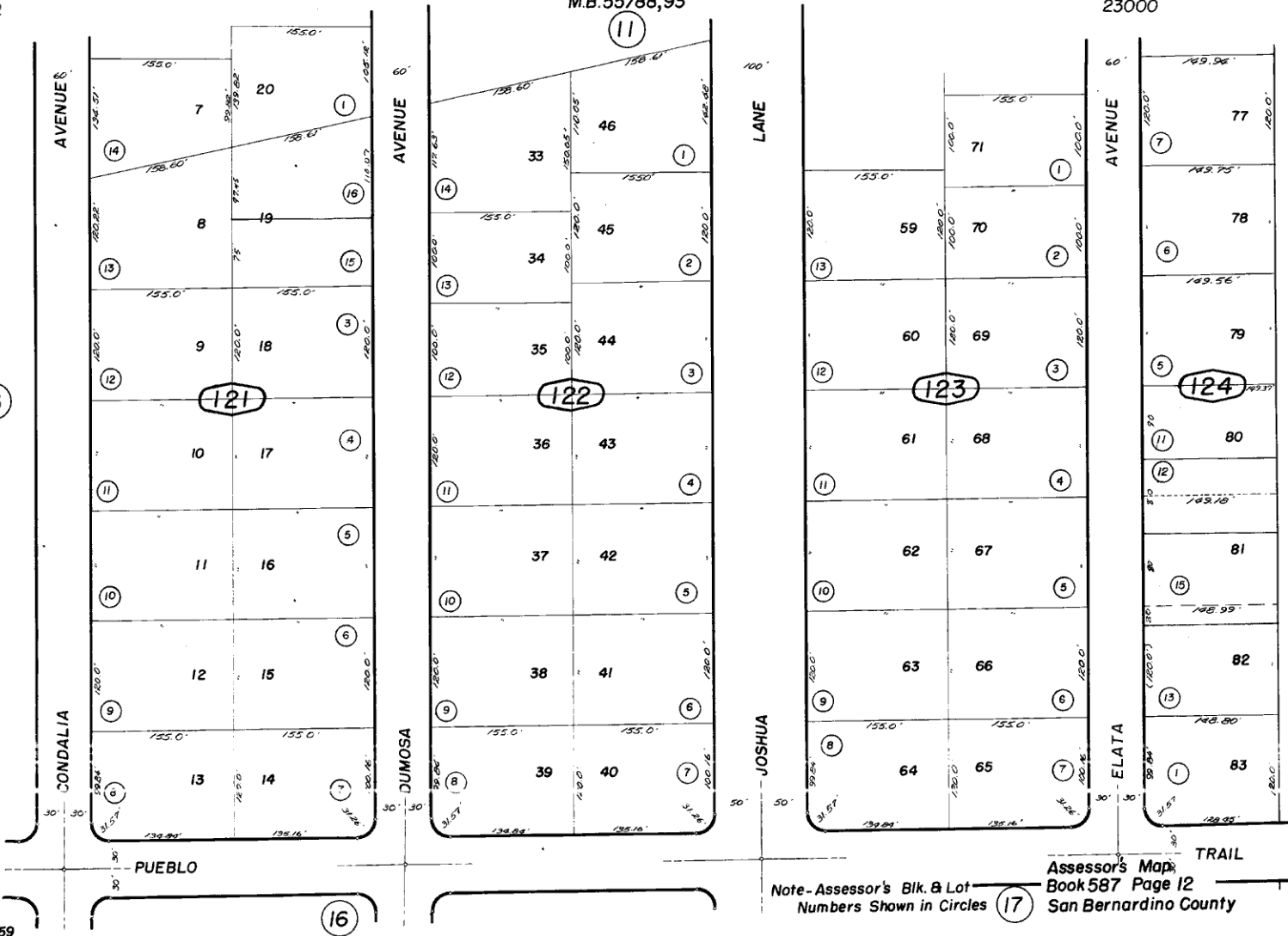




Por. Joshua Forest Estates No.1 Tract 4336  
M.B.55/88,93

Town of Yucca Valley 587 - 12  
Tax Rate Area  
23000



July, 1959

Note- Assessor's Blk. & Lot Numbers Shown in Circles (17)  
Assessor's Map Book 587 Page 12 San Bernardino County

REVISED  
3/31/67  
4/13/92 RM  
12/17/92 RR  
1/27/93 GP  
6/14/94 RM