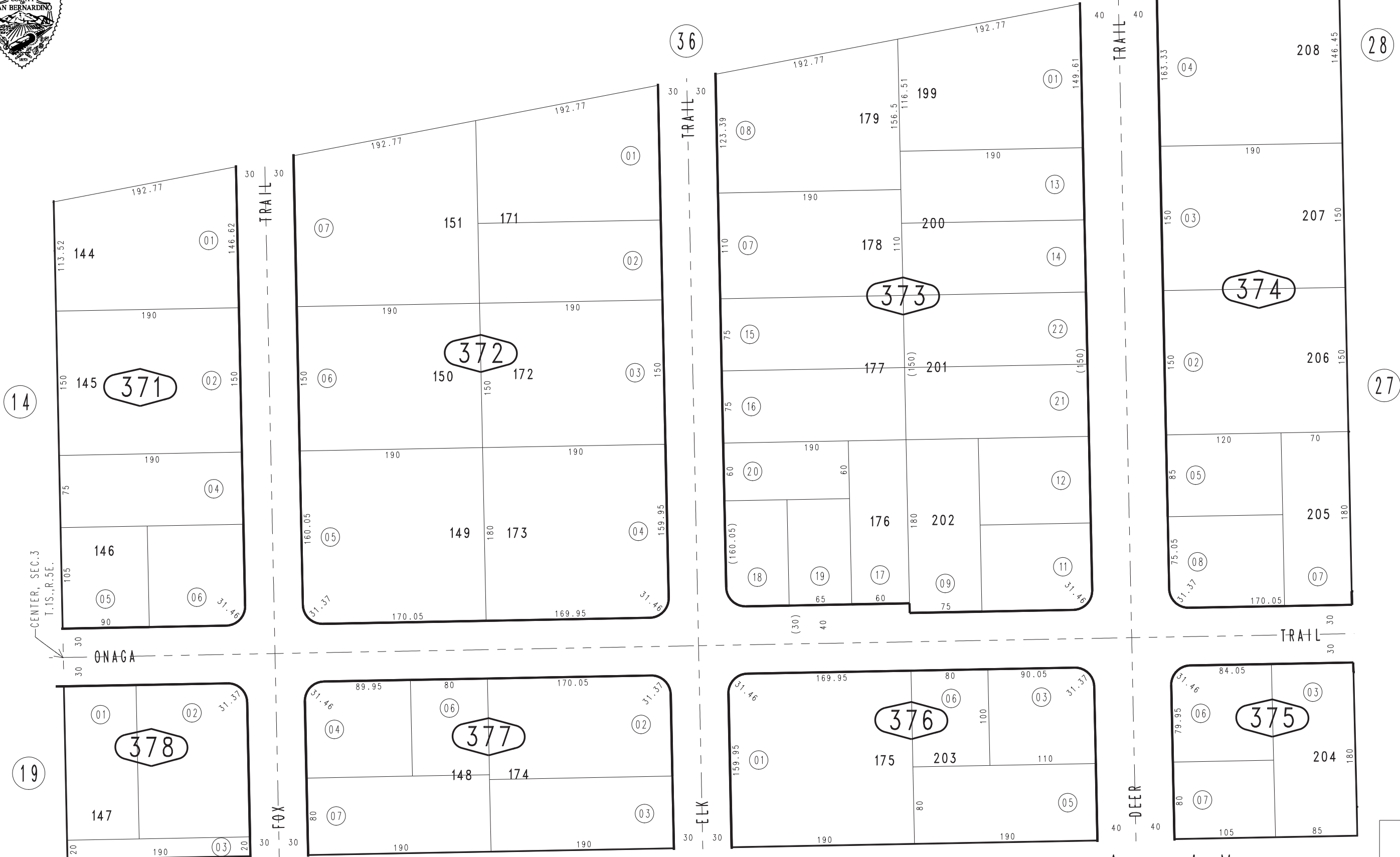


THIS MAP IS FOR THE PURPOSE OF AD VALOREM TAXATION ONLY.

Ptn. Yucca Village, Tract No. 2865
M.B. 39/87-90

Town of Yucca Valley
Tax Rate Area
23000

0586-37



January 2005

Ptn. E.1/2, Sec. 3
T.1S., R.5E.

Assessor's Map
Book 0586 Page 37
San Bernardino County

REVISED
04/01/10 RM