

THIS MAP IS FOR THE PURPOSE OF AD VALOREM TAXATION ONLY.

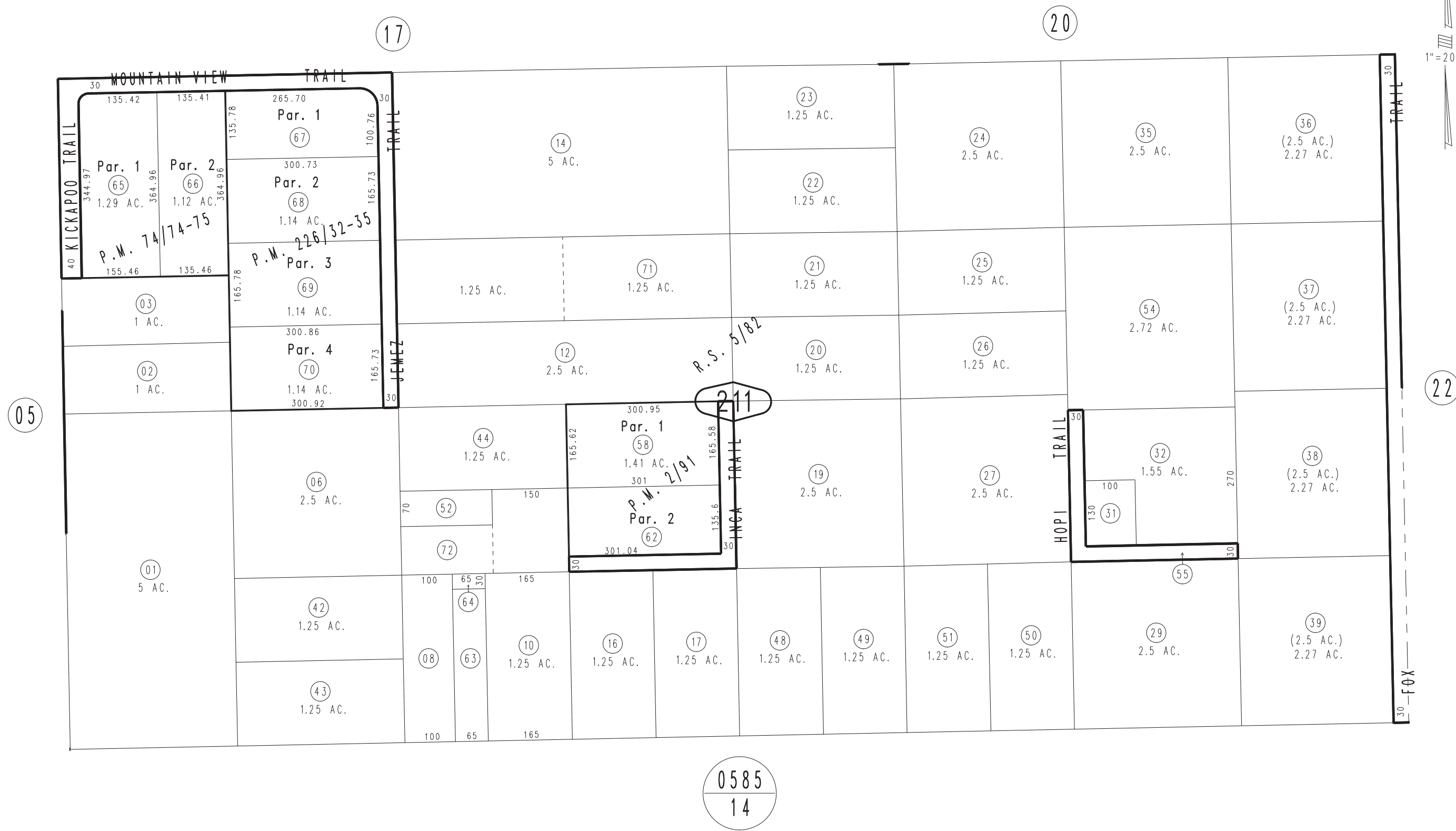
S.1/2, S.W.1/4, Fractional Sec.3, T.1S.,R.5E., S.B.B.&M.

Town of Yucca Valley
Tax Rate Area
23000

0586-21



1"=200'



January 2005

Parcel Map No. 17012, P.M. 226/32-35
Parcel Map No. 7330, P.M. 74/74-75
Parcel Map No. 270, P.M. 2/91

Assessor's Map
Book 0586 Page 21
San Bernardino County

REVISED
02/03/21 KA