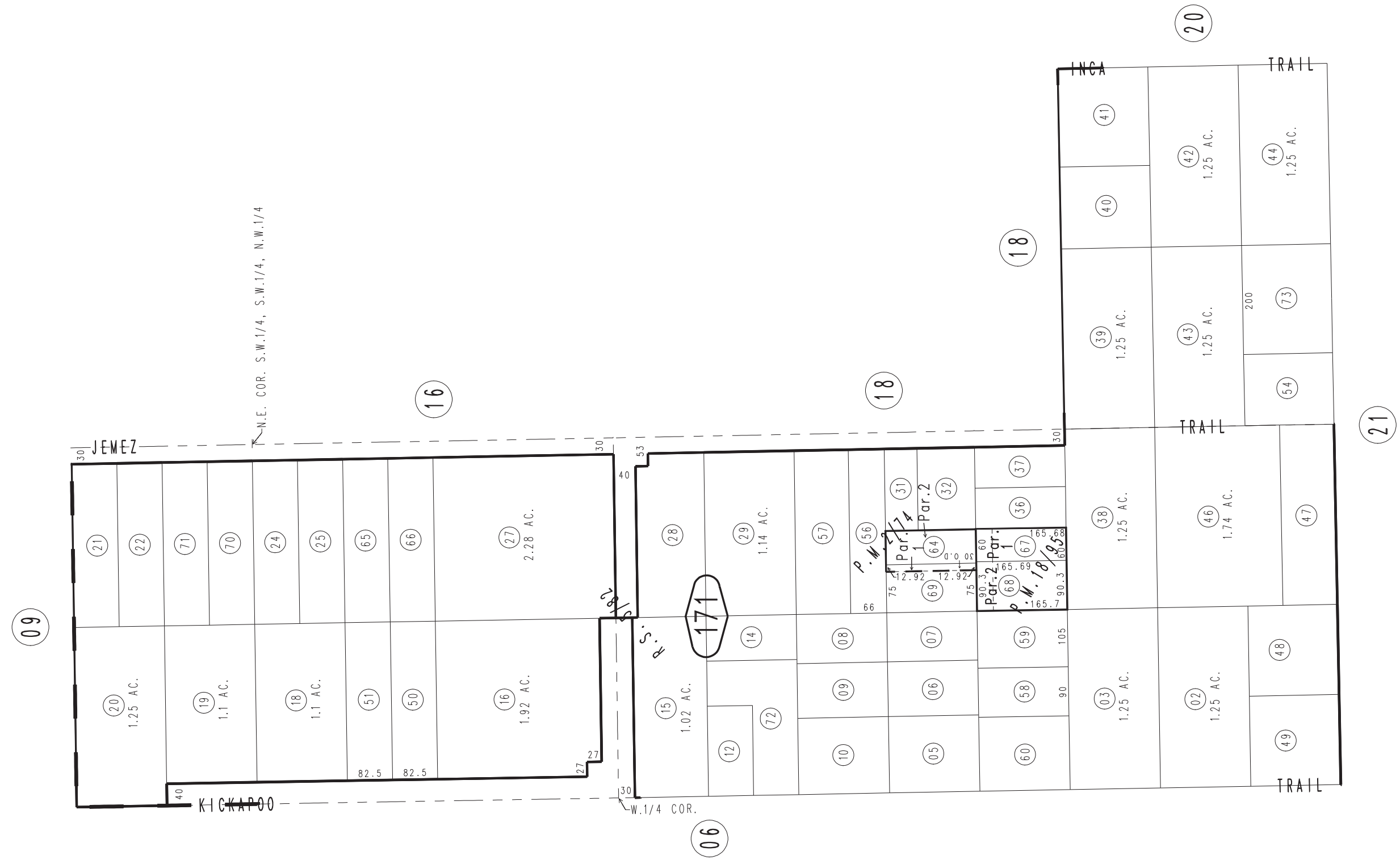
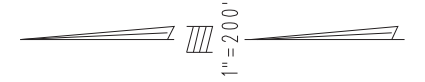


THIS MAP IS FOR THE PURPOSE
OF AD VALOREM TAXATION ONLY.

Ptn. W.1/2, Fractional Sec.3, T.1S., R.5E., S.B.B.&M.

Town of Yucca Valley
Tax Rate Area
23000

0586-17



January 2005

Parcel Map No. 2170, P.M. 18/95
Parcel Map No. 192, P.M. 2/74

Assessor's Map
Book 0586 Page 17
San Bernardino County

REVISED
08/19/24 KC