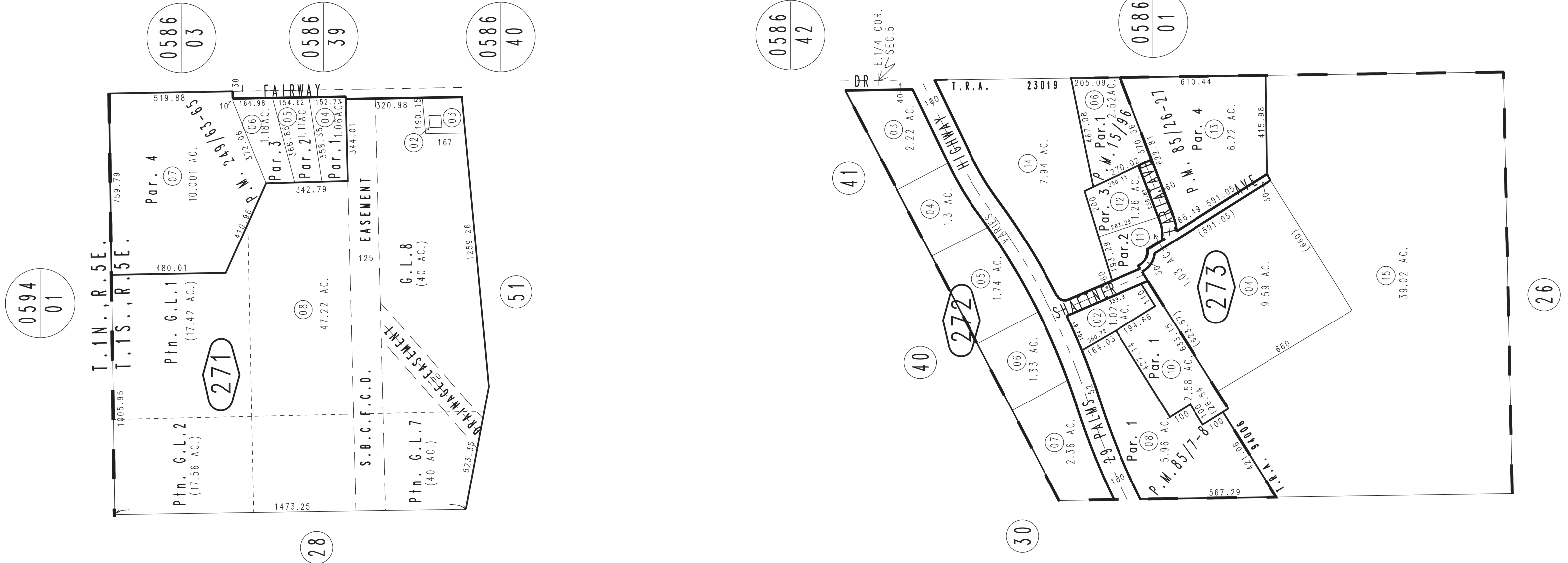
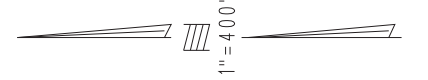


THIS MAP IS FOR THE PURPOSE
OF AD VALOREM TAXATION ONLY.

E.1/3 Fractional Sec.5, T.1S.,R.5E., S.B.B.&M.

Town of Yucca Valley 0585-27
Morongo Unified
Tax Rate Area
23019,94006



March 2005

Parcel Map No. 19685, P.M. 249/63-65
 Parcel Map No. 7849, P.M. 85/26-27
 Parcel Map No. 5737, P.M. 78/8-9 - Amending Map, P.M. 85/7-8
 Parcel Map No. 1733, P.M. 15/96

Assessor's Map
 Book 0585 Page 27
 San Bernardino County

REVISED
 12/13/24 CA