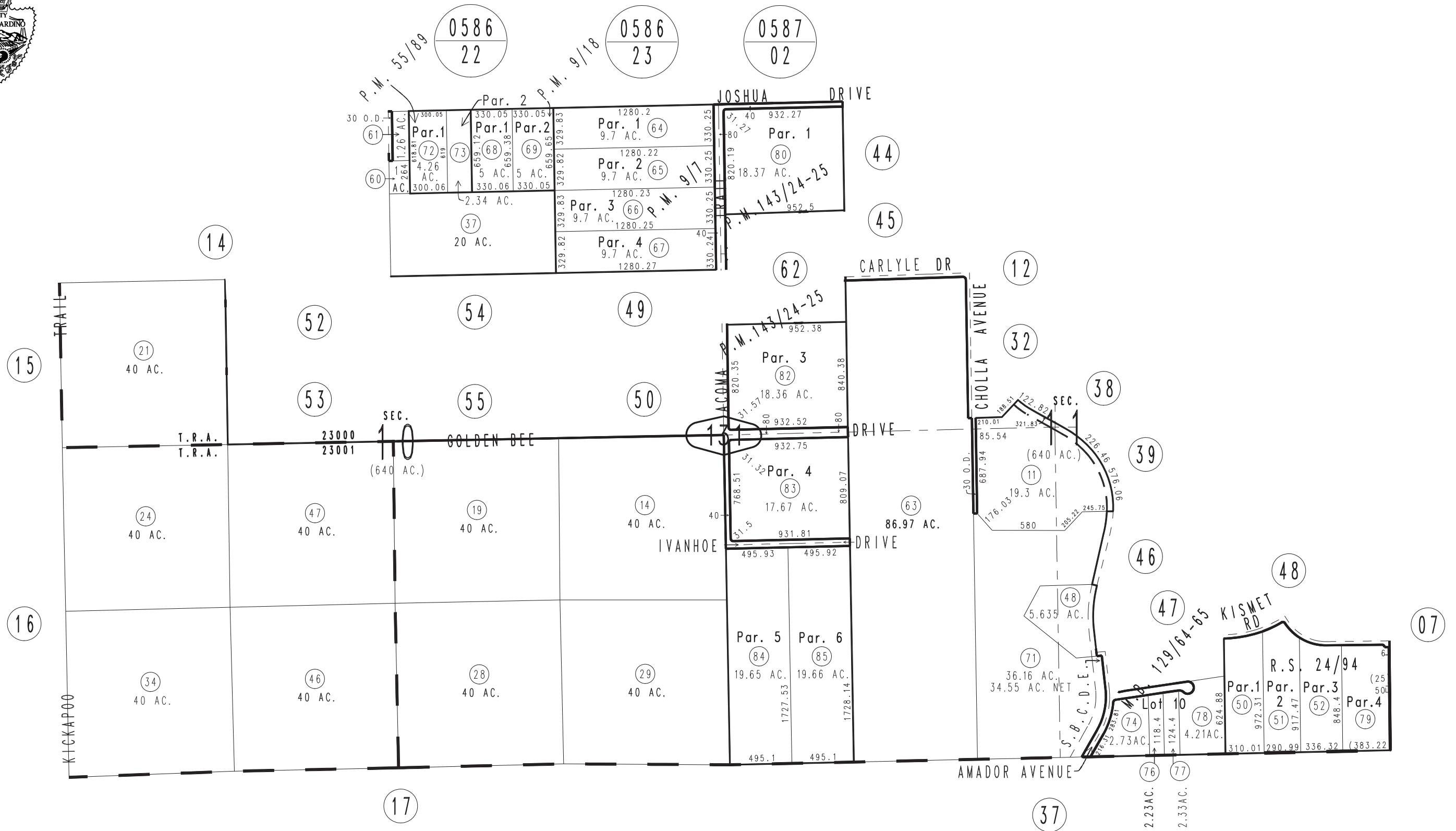


THIS MAP IS FOR THE PURPOSE OF AD VALOREM TAXATION ONLY.

Ptn. Sec.10 & Sec.11, T.1S.,R.5E., S.B.B.&M.

Town of Yucca Valley  
Tax Rate Area  
23000,23001

0585-13



Parcel Map No. 5556, P.M. 55/89  
Ptn. Tract No. 9114, M.B. 129/64-65  
Parcel Map No. 999, P.M. 9/18  
Parcel Map No. 998, P.M. 9/7  
R.S. 24/94

Ptn. Parcel Map No. 11005, P.M. 143/24-25

Assessor's Map  
Book 0585 Page 13  
San Bernardino County

REVISED  
06/12/17 KA