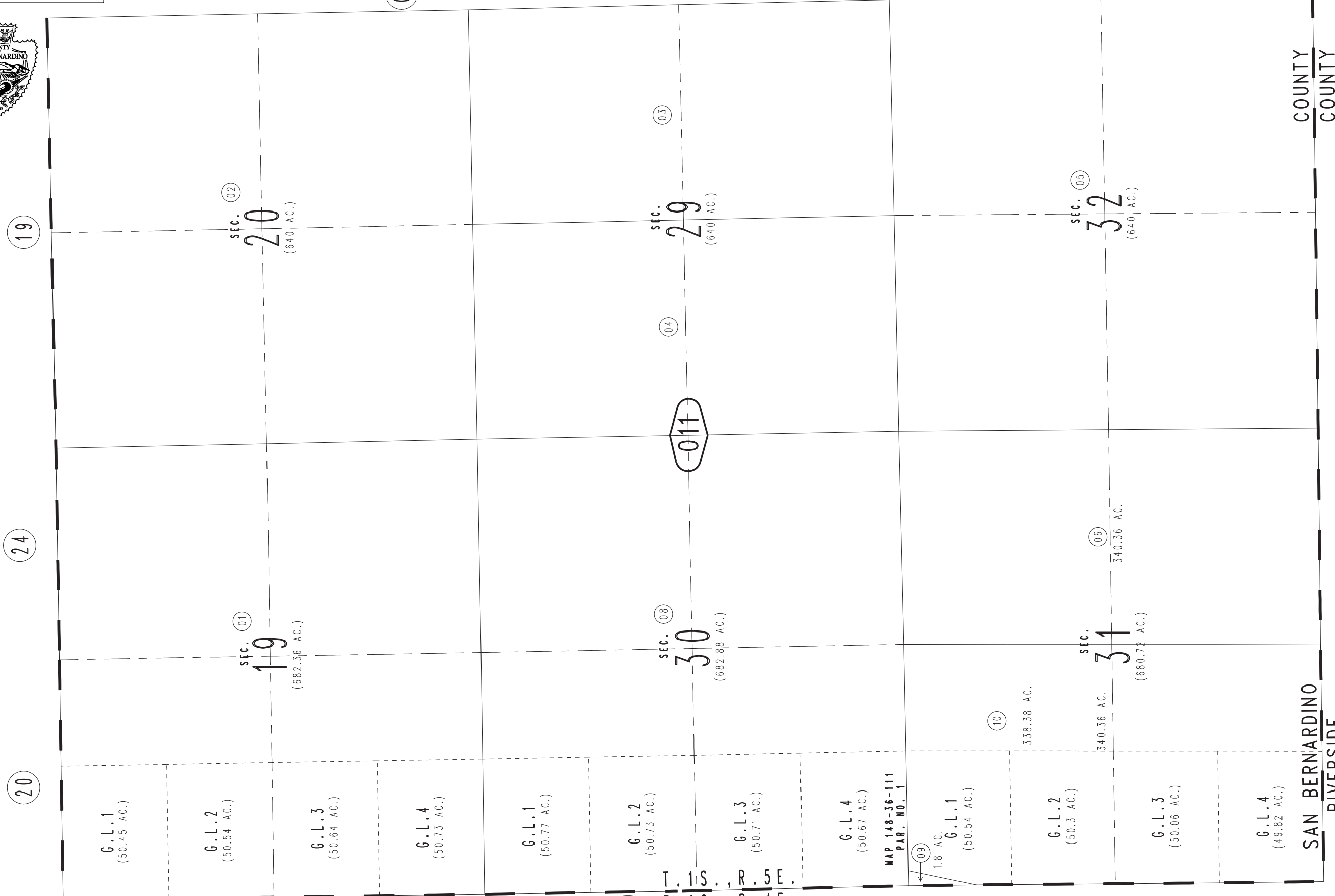


THIS MAP IS FOR THE PURPOSE OF AD VALOREM TAXATION ONLY.

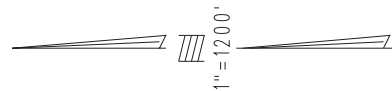
Fractional Sec.19,30,31, Sec.20,29,32, T.1S.,R.5E., S.B.B.&M.

Morongo Unified Tax Rate Area 94102

0585-01



March 2005



0584 / 23

T. 1 S., R. 5 E.
T. 1 S., R. 4 E.

MAP 148-36-111
PAR. NO. 1

1.8 AC.
G.L.1
(50.54 AC.)

(10)

338.38 AC.

G.L.2
(50.3 AC.)

340.36 AC.

G.L.3
(50.06 AC.)

(680.72 AC.)

340.36 AC.

G.L.4
(49.82 AC.)

SAN BERNARDINO
RIVERSIDE

COUNTY
COUNTY

Assessor's Map
Book 0585 Page 01
San Bernardino County

REVISED
06/08/21 GW-MC