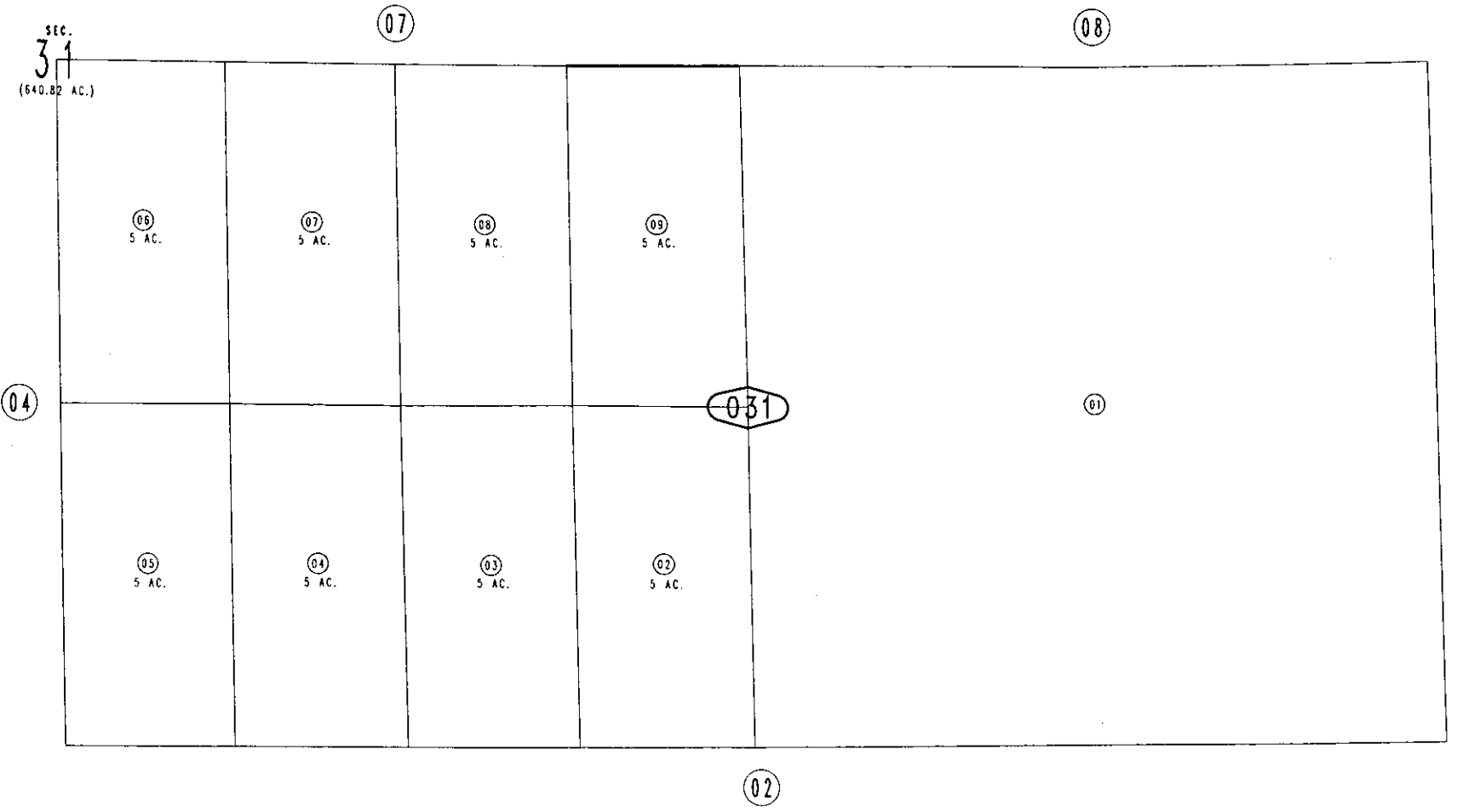
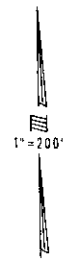


THIS MAP IS FOR THE PURPOSE
OF AD VALOREM TAXATION ONLY.

N.1/2, S.E.1/4, Fractional Sec.31, T.1S.,R.4E., S.B.B.&M.

Morongo Unified
Tax Rate Area
94011

0584-03



December 2004

Assessor's Map
Book 0584 Page 03
San Bernardino County

REVISED