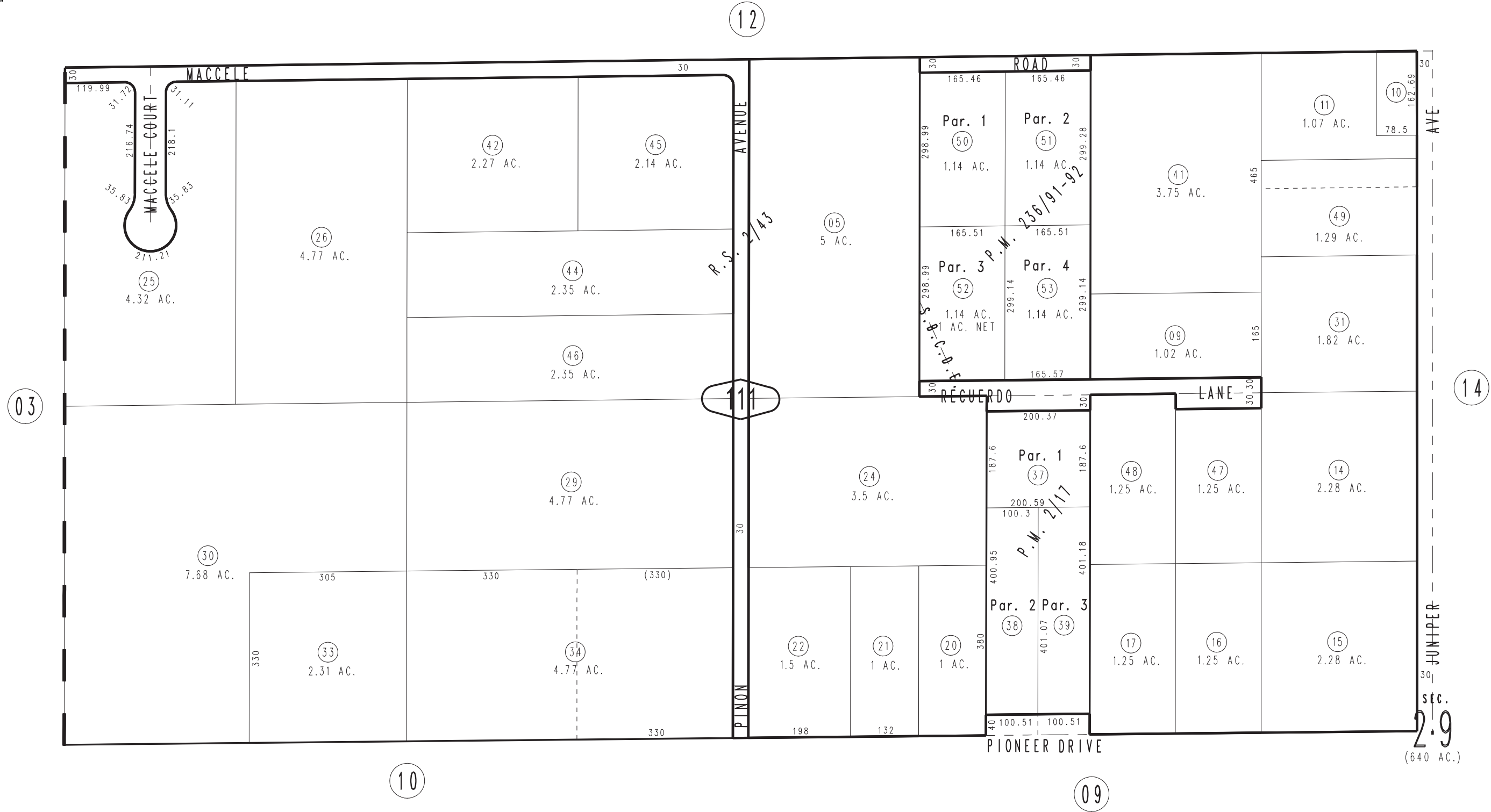


THIS MAP IS FOR THE PURPOSE  
OF AD VALOREM TAXATION ONLY.

S.1/2, N.W.1/4 Sec.29, T.1S.,R.4E., S.B.B.&M.

Morongo Unified  
Tax Rate Area  
94068

0583-11



January 2005

Parcel Map No. 18021, P.M. 236/91-92  
Parcel Map No. 155, P.M. 2/17

Assessor's Map  
Book 0583 Page 11  
San Bernardino County

REVISED  
07/07/21 GW