

THIS MAP IS FOR THE PURPOSE
OF AD VALOREM TAXATION ONLY.

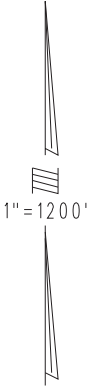
Fractional Sec.13,24 & Sec.14,15,22,23, T.1S.,R.3E., S.B.B.&M.

Morongo Unified
Tax Rate Area
94037

0580-11

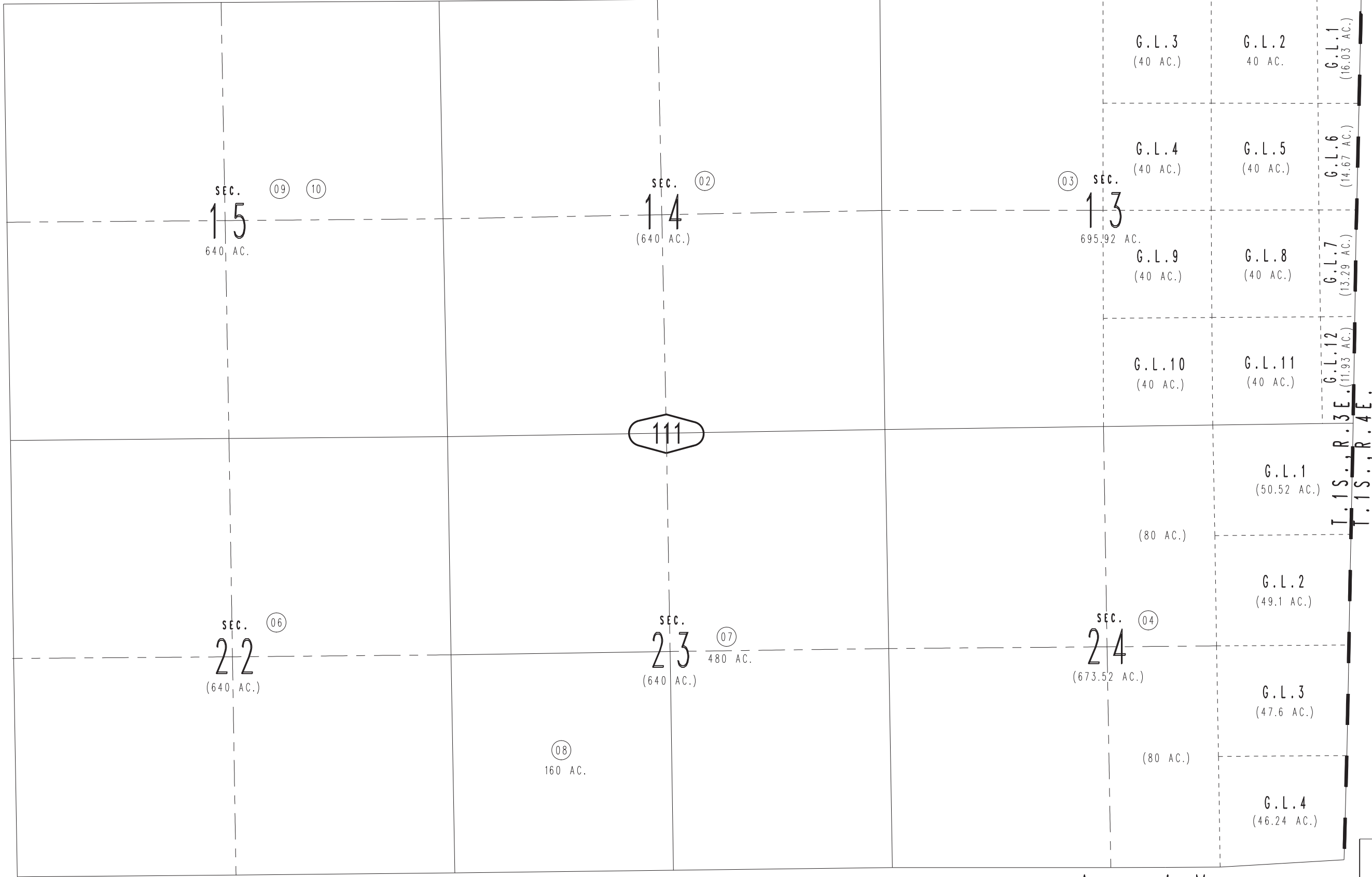


12



08

0582
02



SEC. 09 10
15
640 AC.

SEC. 02
14
(640 AC.)

SEC. 03
13
695.92 AC.

SEC. 06
22
(640 AC.)

SEC. 07
23
480 AC.
(640 AC.)

SEC. 04
24
(673.52 AC.)

08
160 AC.

G.L.3 (40 AC.) G.L.2 40 AC. G.L.1 (16.03 AC.)

G.L.4 (40 AC.) G.L.5 (40 AC.) G.L.6 (14.67 AC.)

G.L.9 (40 AC.) G.L.8 (40 AC.) G.L.7 (13.29 AC.)

G.L.10 (40 AC.) G.L.11 (40 AC.) G.L.12 (11.93 AC.)

G.L.1 (50.52 AC.)

G.L.2 (49.1 AC.)

G.L.3 (47.6 AC.)

G.L.4 (46.24 AC.)

T.1S.,R.3E.,
T.1S.,R.4E.

10

REVISED