

THIS MAP IS FOR THE PURPOSE OF AD VALOREM TAXATION ONLY.

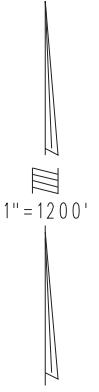
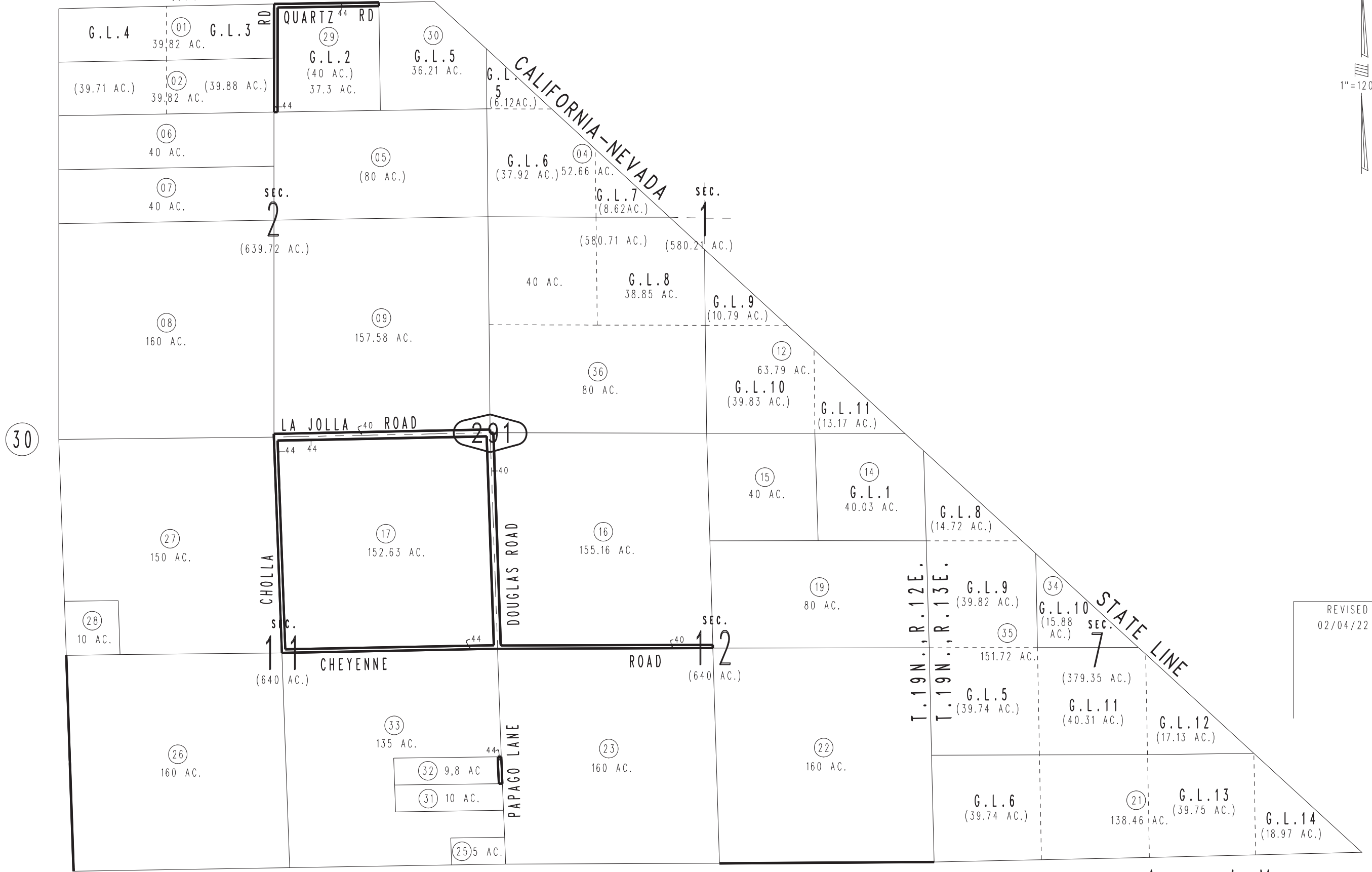
Fractional Sec.1,2, Sec.11,12, T.19N.,R.12E., S.B.B.&M.
Fractional Sec.7, T.19N.,R.13E., S.B.B.&M.

Baker Unified
Tax Rate Area
55009

0572-29



INYO COUNTY



REVISED
02/04/22 KC