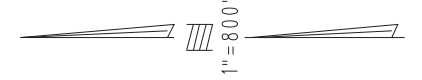


THIS MAP IS FOR THE PURPOSE OF AD VALOREM TAXATION ONLY.

Ptn. Fractional Sec.25,Ptn.Sec.12,Fractional Sec.24,& Sec.13 T.16N.,R.13E.,S.B.B.&M.

Baker Unified
Tax Rate Area
55009

0572-09

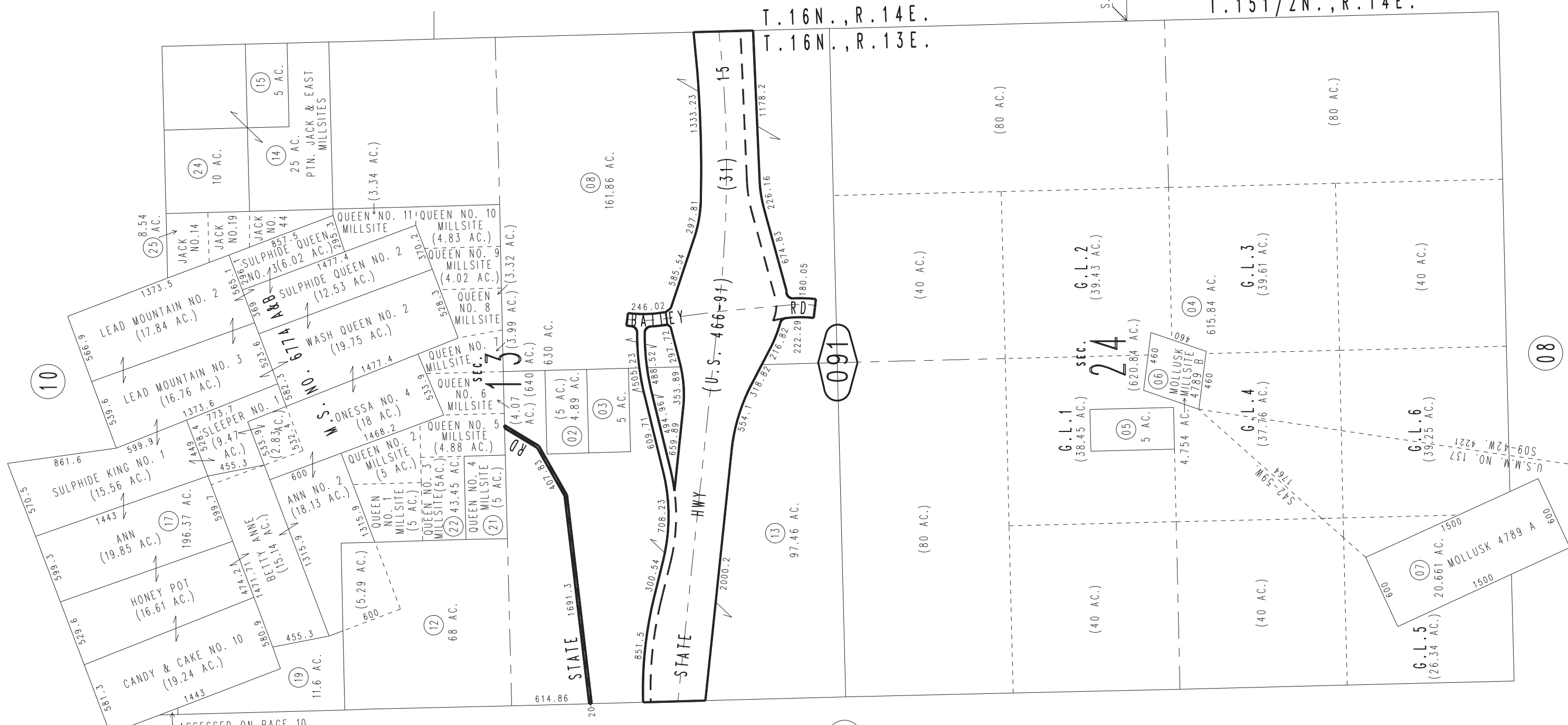


0573
01

S.W. COR.
SEC.31

T.151/2N.,R.14E.

T.16N.,R.14E.
T.16N.,R.13E.



10

091

08

sec. 24
G.L.1 (38.45 AC.)
G.L.2 (39.43 AC.)
G.L.3 (39.61 AC.)
G.L.4 (37.76 AC.)
G.L.5 (26.34 AC.)
G.L.6 (39.25 AC.)

07

ASSESSED ON PAGE 10