

THIS MAP IS FOR THE PURPOSE OF AD VALOREM TAXATION ONLY.

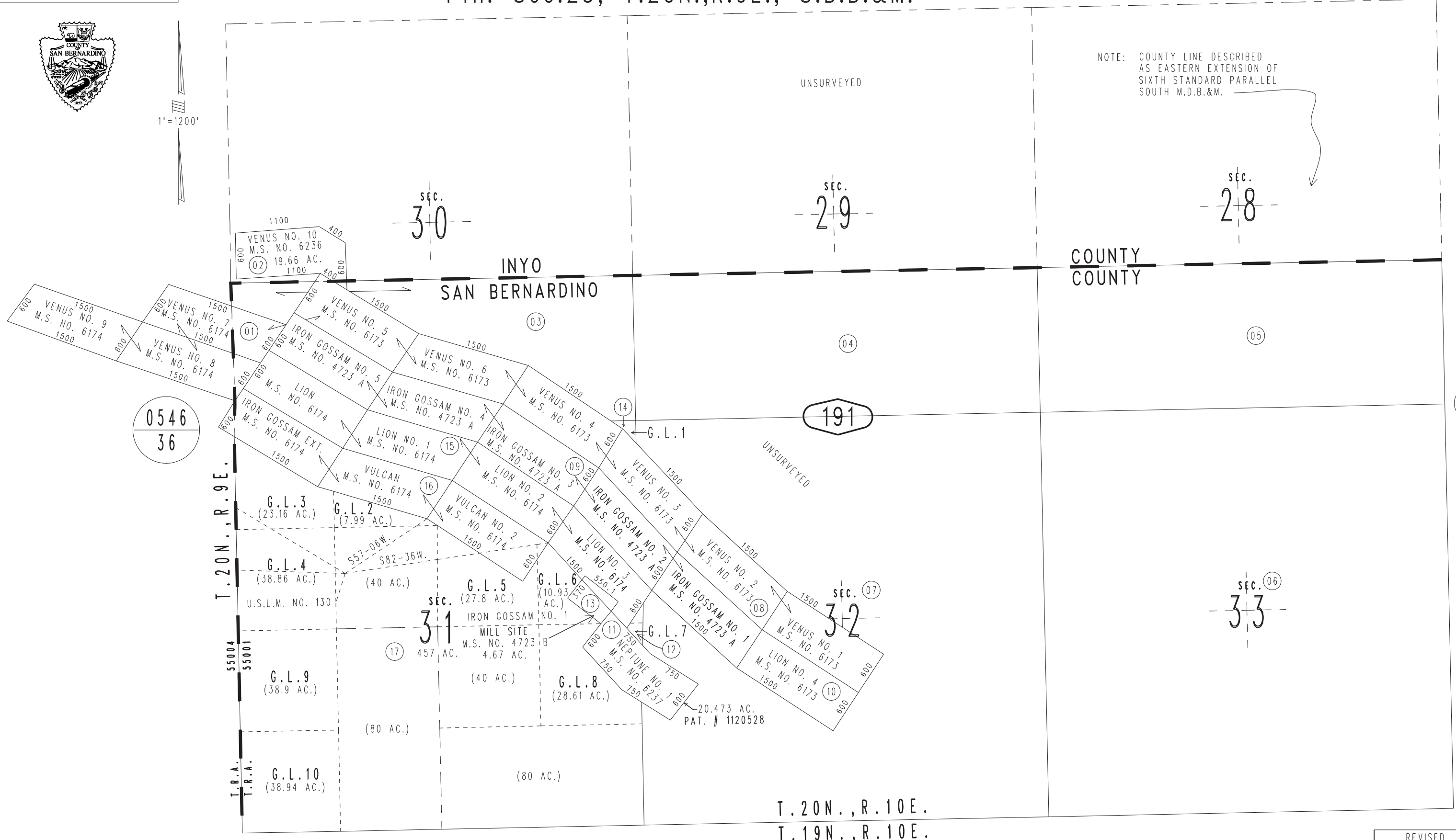


1"=1200'

Fractional Sec.31, Ptn. Sec.28,29,30 & Sec.32,33, T.20N.,R.10E., S.B.B.&M. Ptn. Sec.25, T.20N.,R.9E., S.B.B.&M.

Baker Unified Tax Rate Area 0571-19 55004 55009

NOTE: COUNTY LINE DESCRIBED AS EASTERN EXTENSION OF SIXTH STANDARD PARALLEL SOUTH M.D.B.&M.



0546
36

191

20

T.20N., R.9E.

55004
55001

T.R.A.
T.R.A.

T.20N., R.10E.
T.19N., R.10E.

18

REVISED 04/26/13 RM-MC

Assessor's Map Book 0571 Page 19 San Bernardino County