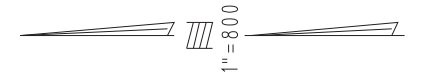


THIS MAP IS FOR THE PURPOSE  
OF AD VALOREM TAXATION ONLY.

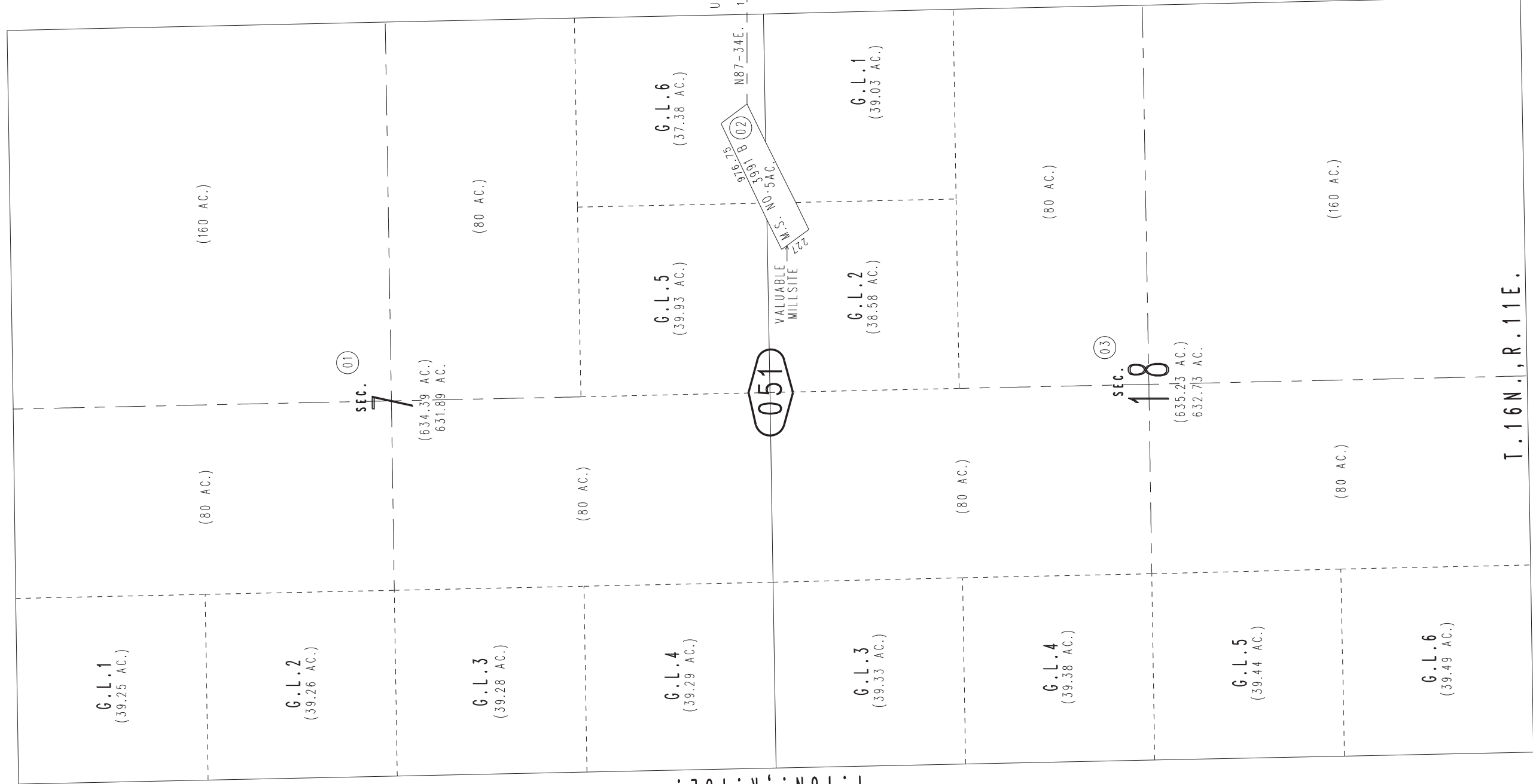
# Fractional Sec.7&18, T.16N.,R.11E., S.B.B.&M.

Baker Unified  
Tax Rate Area  
55009

0571 - 05



04



T. 16 N., R. 10 E.

T. 16 N., R. 11 E.

U.S.L.M. NO. 94

1241.6

06

051

04

03

01  
SEC. 7

03  
SEC. 18

G.L. 1  
(39.25 AC.)

G.L. 2  
(39.26 AC.)

G.L. 3  
(39.28 AC.)

G.L. 4  
(39.29 AC.)

G.L. 3  
(39.33 AC.)

G.L. 4  
(39.38 AC.)

G.L. 5  
(39.44 AC.)

G.L. 6  
(39.49 AC.)

G.L. 5  
(39.93 AC.)

G.L. 6  
(37.38 AC.)

G.L. 2  
(38.58 AC.)

G.L. 1  
(39.03 AC.)

(634.39 AC.)  
631.89 AC.

(635.23 AC.)  
632.73 AC.

(160 AC.)

(80 AC.)

(80 AC.)

(80 AC.)

(80 AC.)

(80 AC.)

(160 AC.)