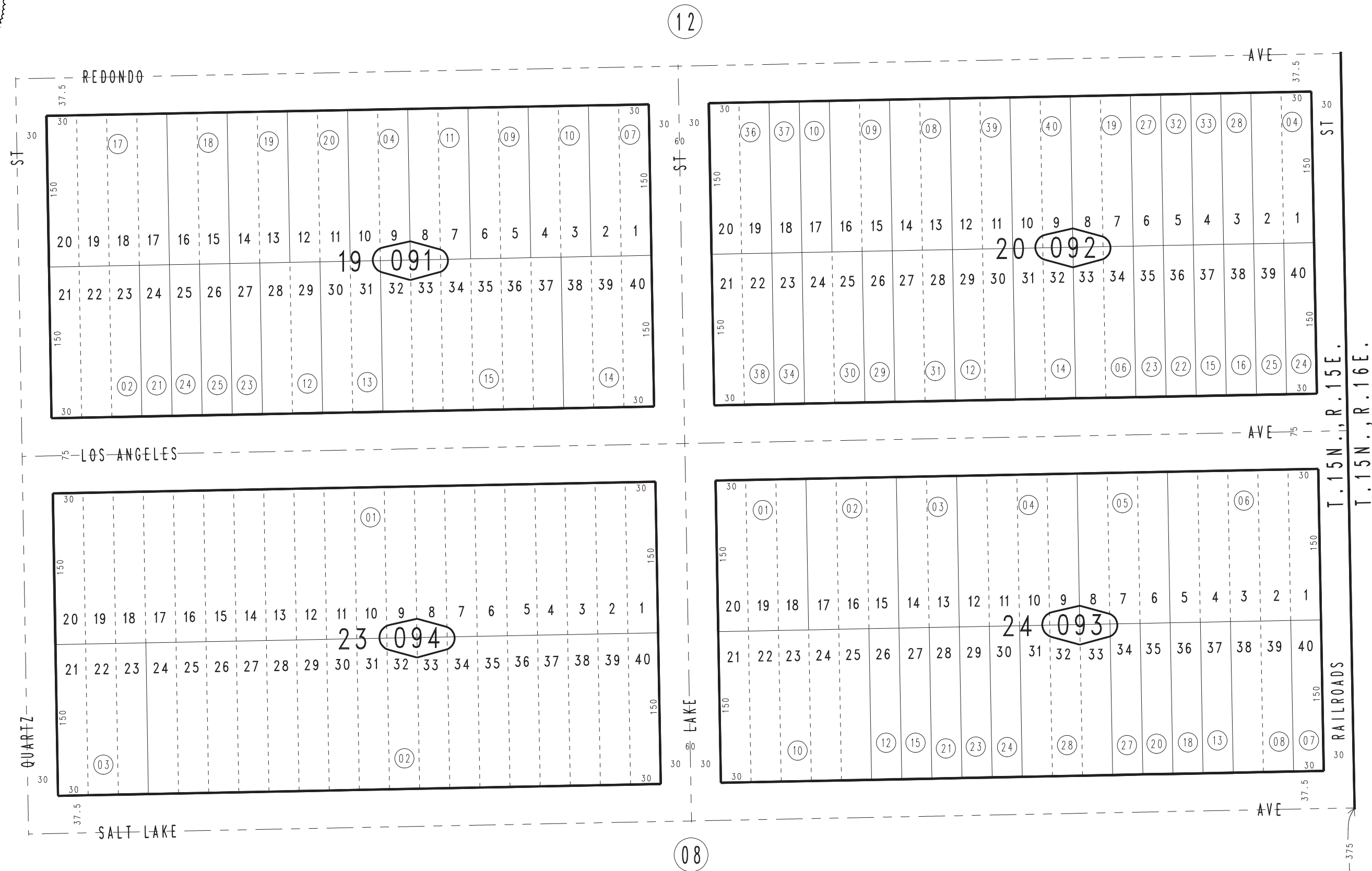


THIS MAP IS FOR THE PURPOSE OF AD VALOREM TAXATION ONLY.

Ptn. Town of Leastalk  
M.B. 14/37

Baker Unified  
Tax Rate Area  
55009

0569-09



40

19

12

08

REVISED  
05/30/24 CA-MC

June 2005

Ptn. S.E.1/4, Sec. 36  
T.15N., R.15E.

Assessor's Map  
Book 0569 Page 09  
San Bernardino County

S.E. COR. SEC.36  
T.15N., R.15E.