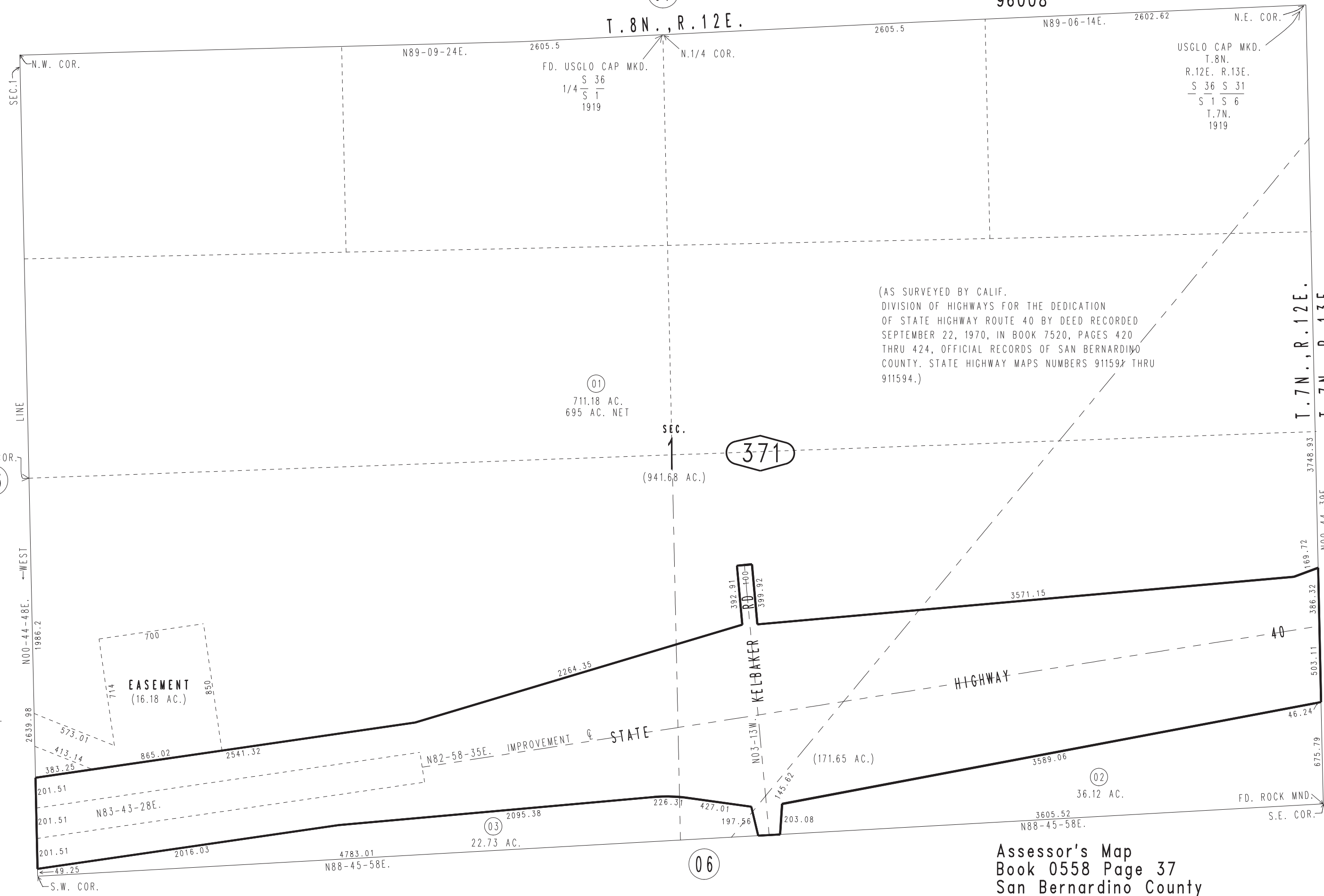


THIS MAP IS FOR THE PURPOSE OF AD VALOREM TAXATION ONLY.

Fractional Sec.1, T.7N.,R.12E., S.B.B.&M.

Needles Unified
Tax Rate Area
96008

0558-37



(AS SURVEYED BY CALIF. DIVISION OF HIGHWAYS FOR THE DEDICATION OF STATE HIGHWAY ROUTE 40 BY DEED RECORDED SEPTEMBER 22, 1970, IN BOOK 7520, PAGES 420 THRU 424, OFFICIAL RECORDS OF SAN BERNARDINO COUNTY. STATE HIGHWAY MAPS NUMBERS 911597 THRU 911594.)

01
711.18 AC.
695 AC. NET

371

SEC. 1
941.68 AC.

EASEMENT
(16.18 AC.)

STATE IMPROVEMENT

HIGHWAY

40

Assessor's Map
Book 0558 Page 37
San Bernardino County

REVISED

July 2005