

THIS MAP IS FOR THE PURPOSE  
OF AD VALOREM TAXATION ONLY.

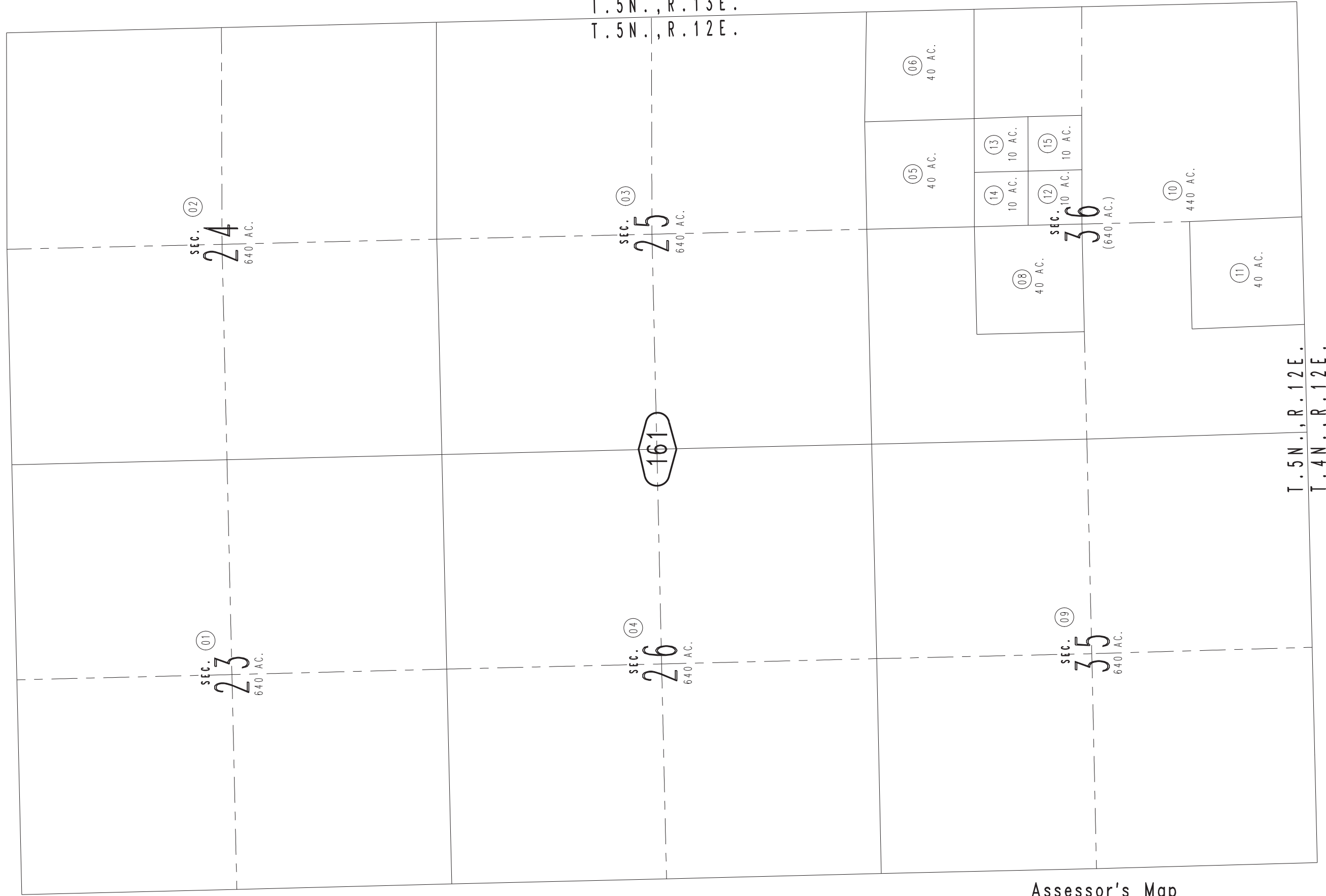
Sec.23,24,25,26,35,36, T.5N.,R.12E., S.B.B.&M.

Needles Unified  
Tax Rate Area  
96008

0556-16



15



SEC. 02  
24  
640 AC.

SEC. 03  
25  
640 AC.

SEC. 01  
23  
640 AC.

SEC. 04  
26  
640 AC.

SEC. 09  
35  
640 AC.

SEC. 10  
36  
(640 AC.)

06  
40 AC.

05  
40 AC.

13  
10 AC.

08  
40 AC.

14  
10 AC.

12  
10 AC.

15  
10 AC.

10  
440 AC.

11  
40 AC.

T.5N., R.13E.  
T.5N., R.12E.

T.5N., R.12E.  
T.4N., R.12E.

161

19

17

REVISED

July 2005