

THIS MAP IS FOR THE PURPOSE OF AD VALOREM TAXATION ONLY.



Fractional Sec.3,4, & Sec.9,10,15,16, T.5N.,R.12E., S.B.B.&M.

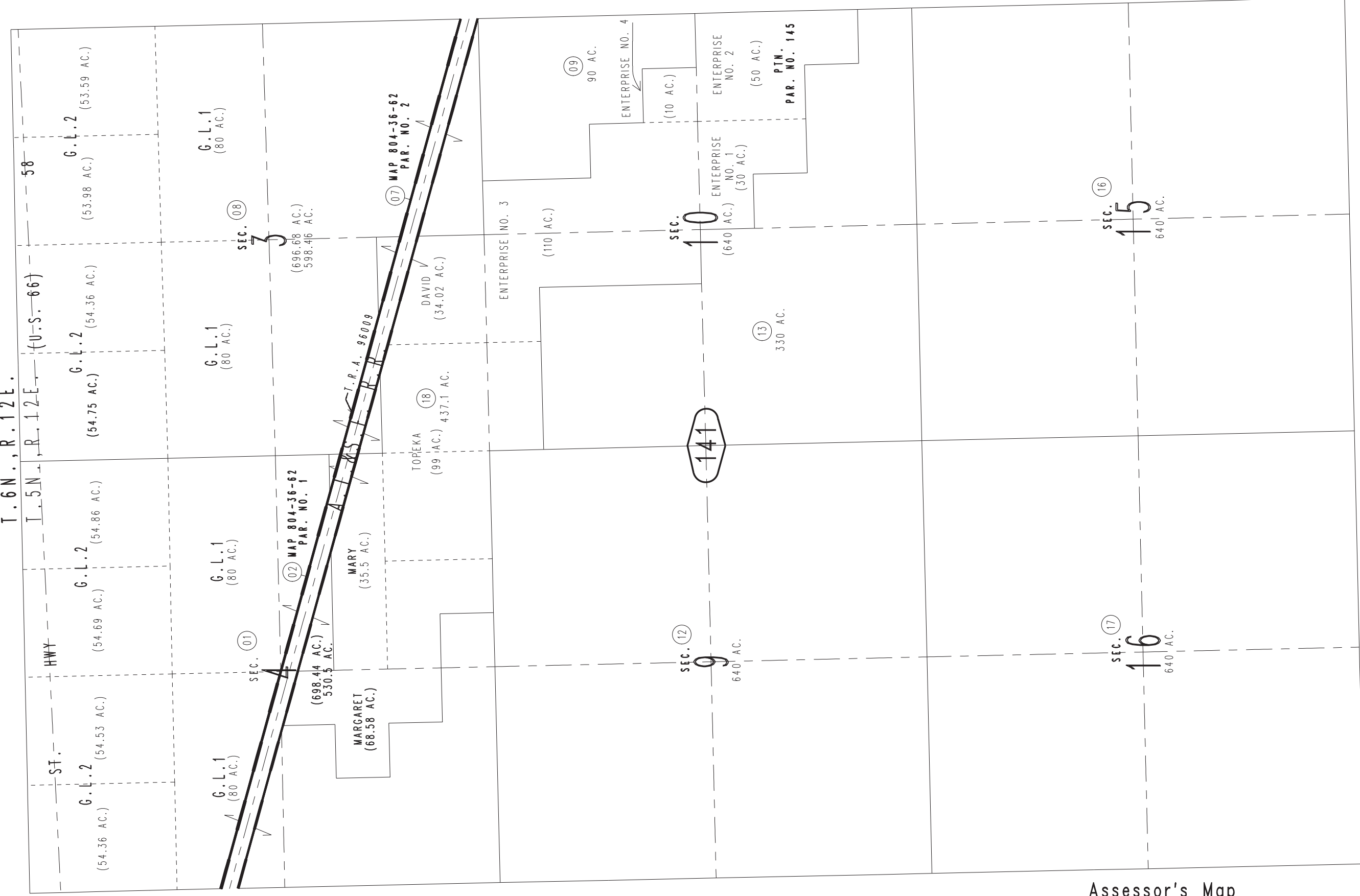
Needles Unified Tax Rate Area 96008,96009

0556-14

1"=1200'

0558  
01

T.6N., R.12E.



July 2005

Assessor's Map Book 0556 Page 14 San Bernardino County

REVISED 06/25/07 LH