

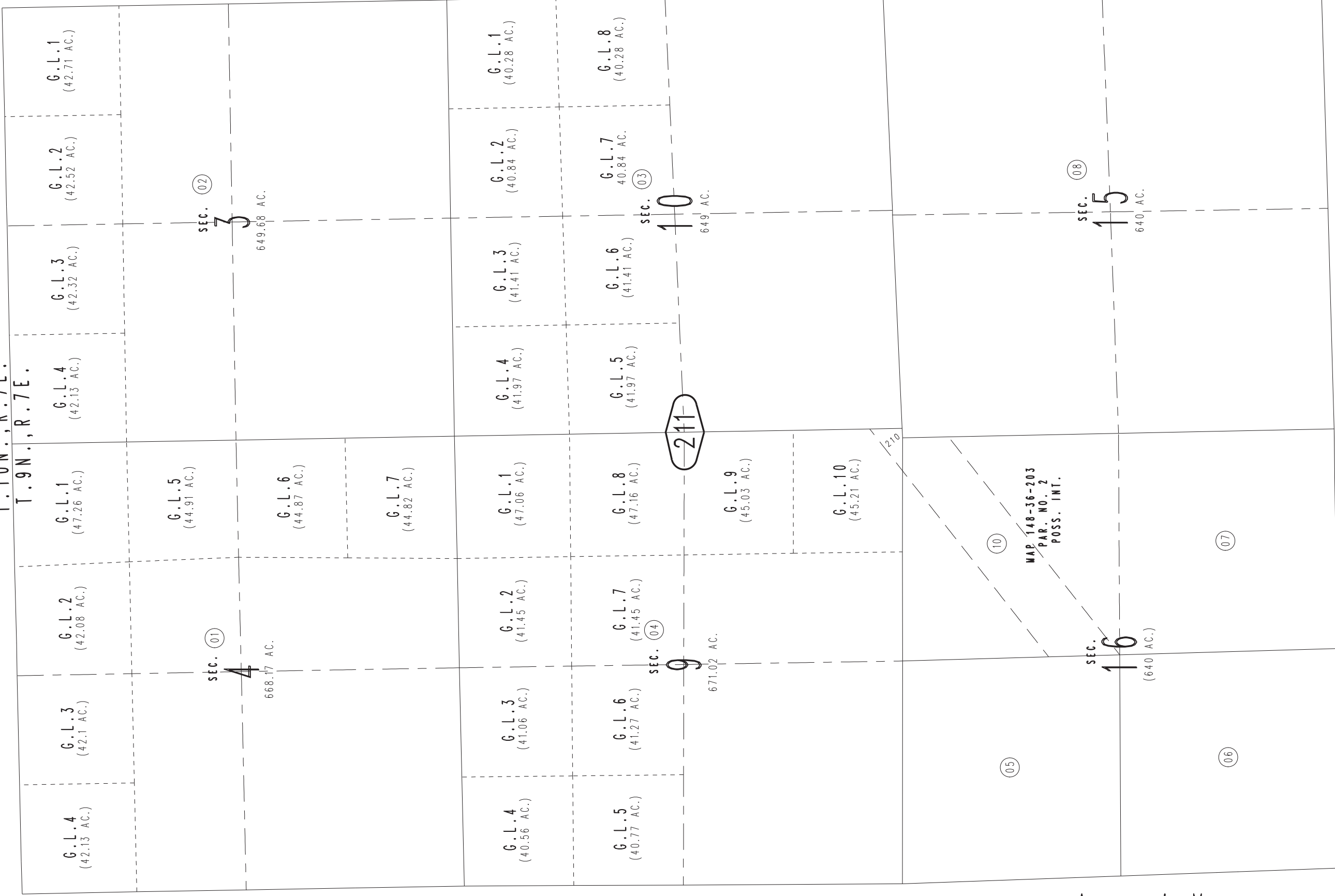
THIS MAP IS FOR THE PURPOSE OF AD VALOREM TAXATION ONLY.

Fractional Sec.3,4,9,10 & Sec.15,16, T.9N.,R.7E., S.B.B.&M.

Silver Valley Unified 0552-21  
Tax Rate Area  
109091



**09**  
T.10N.,R.7E.  
T.9N.,R.7E.



G.L.1  
(42.71 AC.)

G.L.2  
(42.52 AC.)

G.L.3  
(42.32 AC.)

G.L.4  
(42.13 AC.)

G.L.1  
(47.26 AC.)

G.L.2  
(42.08 AC.)

G.L.3  
(42.1 AC.)

G.L.4  
(42.13 AC.)

G.L.5  
(44.91 AC.)

G.L.6  
(44.87 AC.)

G.L.7  
(44.82 AC.)

G.L.1  
(47.06 AC.)

G.L.8  
(47.16 AC.)

G.L.9  
(45.03 AC.)

G.L.10  
(45.21 AC.)

G.L.1  
(40.28 AC.)

G.L.2  
(40.84 AC.)

G.L.3  
(41.41 AC.)

G.L.4  
(41.97 AC.)

G.L.8  
(40.28 AC.)

G.L.7  
(40.84 AC.)

G.L.6  
(41.41 AC.)

G.L.5  
(41.97 AC.)

G.L.2  
(41.45 AC.)

G.L.7  
(41.45 AC.)

G.L.3  
(41.06 AC.)

G.L.6  
(41.27 AC.)

G.L.4  
(40.56 AC.)

G.L.5  
(40.77 AC.)

MAP 148-36-203  
PAR. NO. 2  
POSS. INT.

**11**

**10**

**22**