

THIS MAP IS FOR THE PURPOSE OF AD VALOREM TAXATION ONLY.



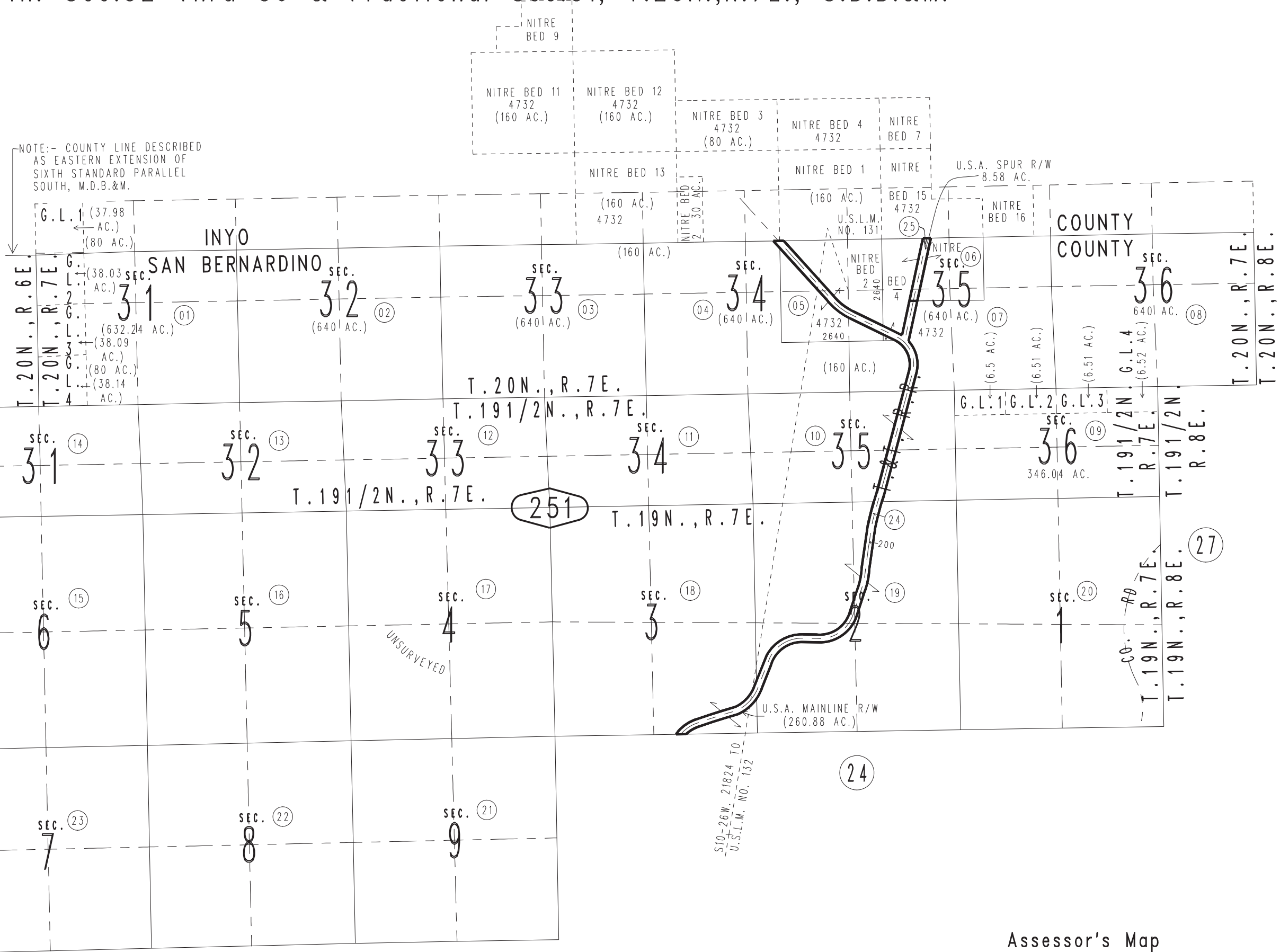
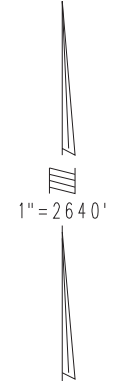
Sec.1 Thru 9, T.19N.,R.7E., S.B.B.&M.

T.191/2N.,R.7E., S.B.B.&M.

Ptn. Sec.32 Thru 36 & Fractional Sec.31, T.20N.,R.7E., S.B.B.&M.

Baker Unified Tax Rate Area 55004

0546-25



NOTE:- COUNTY LINE DESCRIBED AS EASTERN EXTENSION OF SIXTH STANDARD PARALLEL SOUTH, M.D.B.&M.

NITRE BED 9, NITRE BED 11 (160 AC.), NITRE BED 12 (160 AC.), NITRE BED 3 (80 AC.), NITRE BED 4 (160 AC.), NITRE BED 7, NITRE BED 13 (160 AC.), NITRE BED 1 (160 AC.), NITRE BED 15 (160 AC.), NITRE BED 16

U.S.A. SPUR R/W 8.58 AC.

U.S.L.M. NO. 131

U.S.L.M. NO. 131

U.S.L.M. NO. 131

U.S.L.M. NO. 131

U.S.L.M. NO. 131

U.S.L.M. NO. 131

U.S.L.M. NO. 131

U.S.L.M. NO. 131

U.S.L.M. NO. 131

U.S.L.M. NO. 131

U.S.L.M. NO. 131

U.S.L.M. NO. 131

U.S.L.M. NO. 131

U.S.L.M. NO. 131

U.S.L.M. NO. 131

U.S.L.M. NO. 131

U.S.L.M. NO. 131

U.S.L.M. NO. 131

U.S.L.M. NO. 131

U.S.L.M. NO. 131

U.S.L.M. NO. 131

U.S.L.M. NO. 131

U.S.L.M. NO. 131

U.S.L.M. NO. 131

17

251

24

27

23