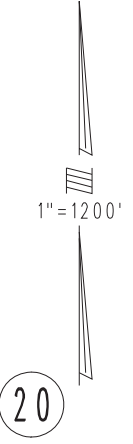
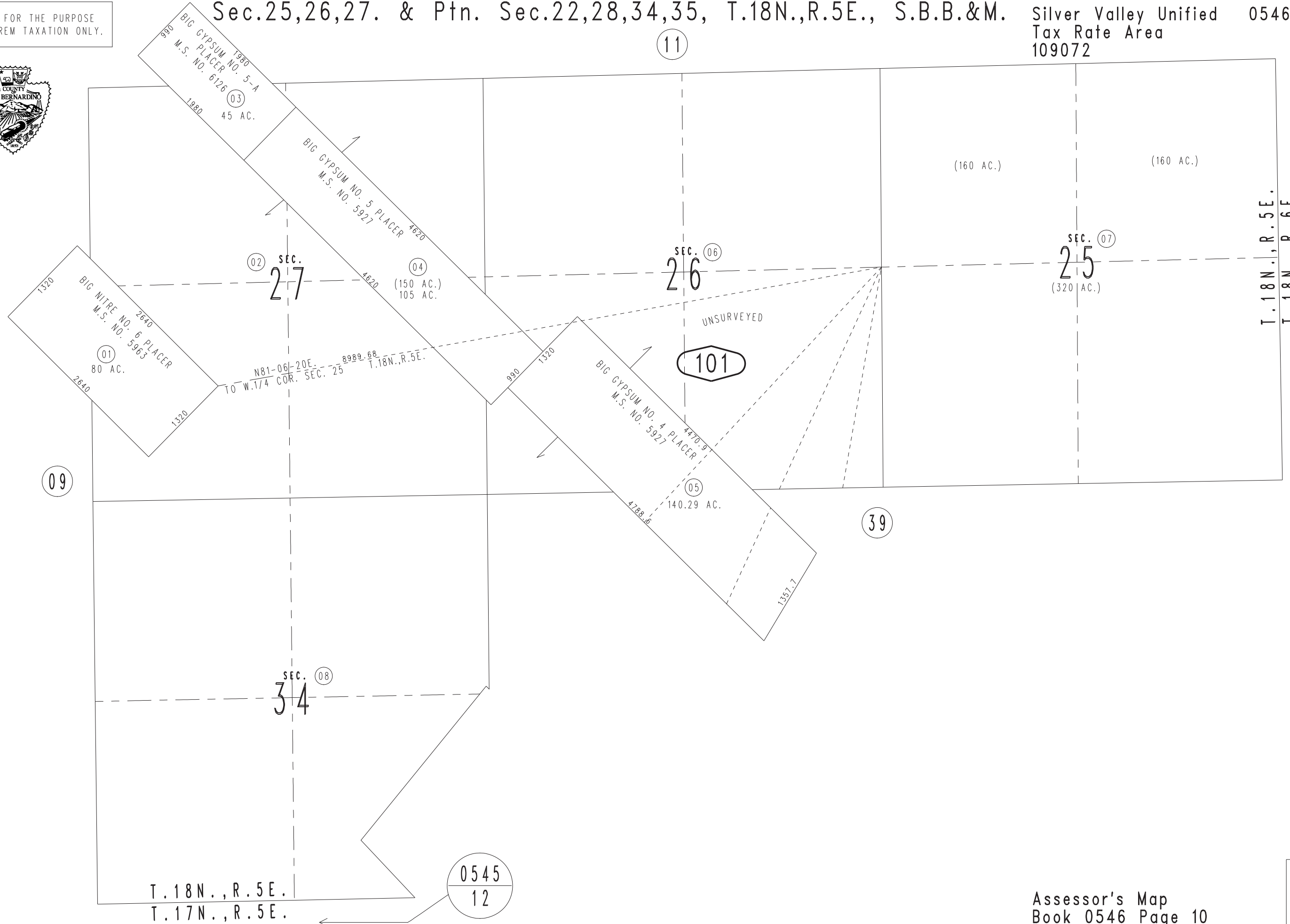


THIS MAP IS FOR THE PURPOSE OF AD VALOREM TAXATION ONLY.



Sec.25,26,27. & Ptn. Sec.22,28,34,35, T.18N.,R.5E., S.B.B.&M.

Silver Valley Unified 0546-10
Tax Rate Area
109072



0545
12

T. 18N., R. 5E.
T. 17N., R. 5E.

Assessor's Map
Book 0546 Page 10
San Bernardino County

REVISED