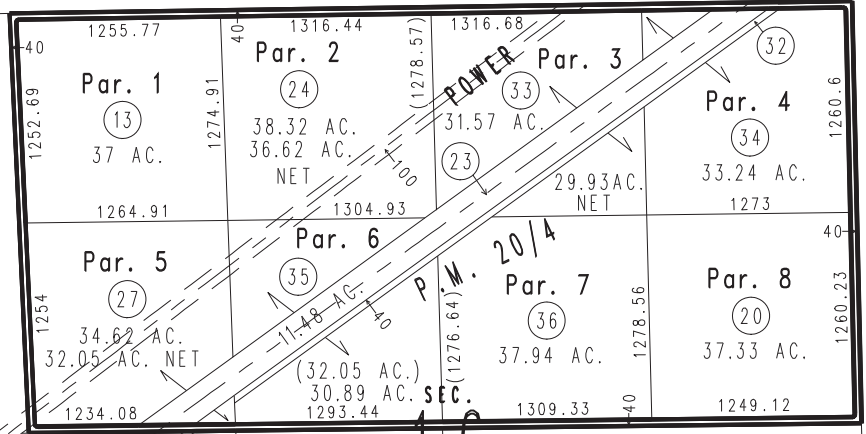
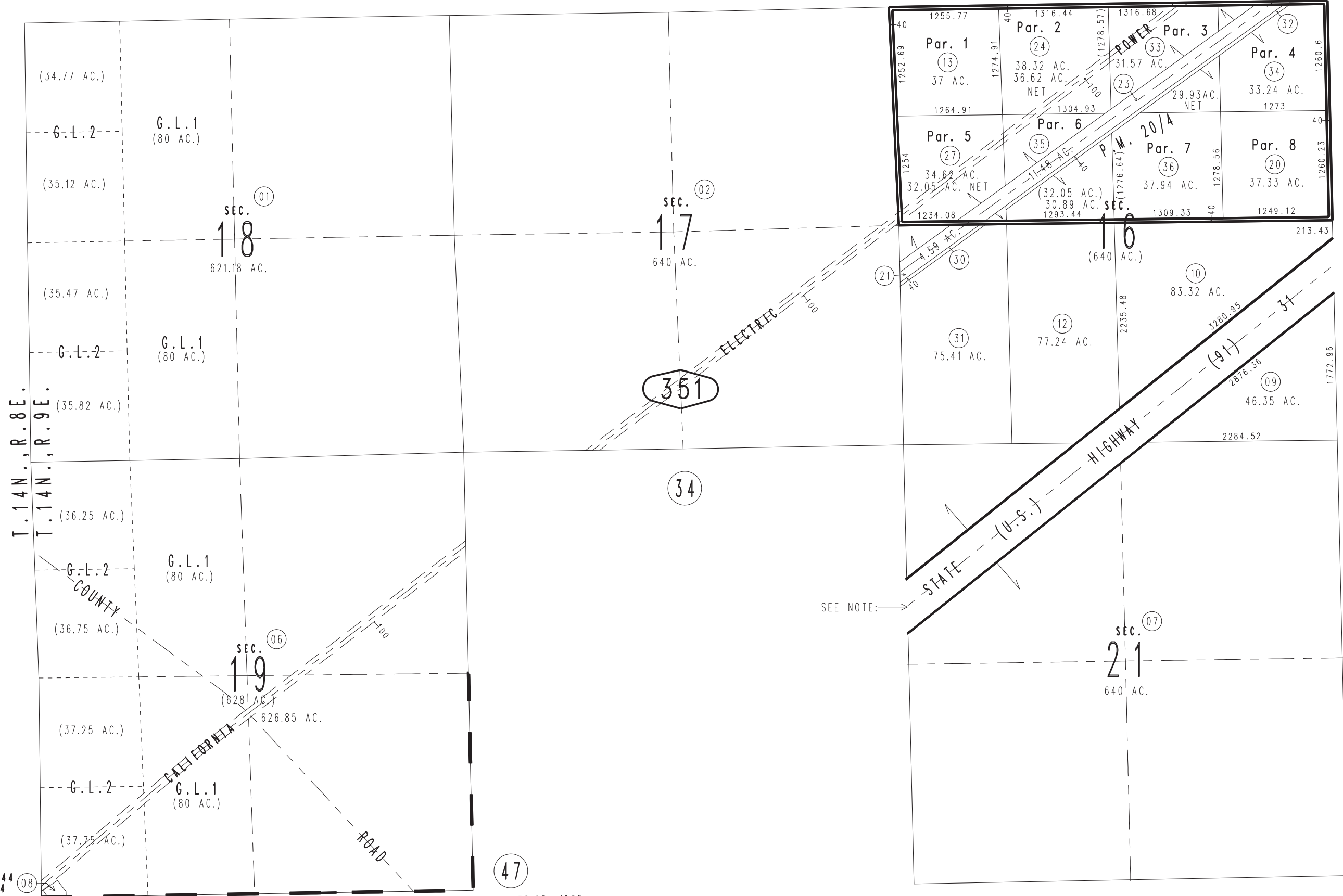
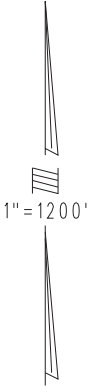


THIS MAP IS FOR THE PURPOSE OF AD VALOREM TAXATION ONLY.

Sec.16,17,21 & Fractional Sec.18&19 T.14N.,R.9E., S.B.B.&M.

Baker Unified
Tax Rate Area
55003

0544-35



MAP 151-36-44
PAR. NO. 4

NOTE: RTE 31 BY U.S. DEPT. OF THE INTERIOR, 1932
VIII-S.BD.-31-KLM-1 OF 1

Assessor's Map
Book 0544 Page 35
San Bernardino County

REVISED
01/26/09 LH
01/27/10 LH