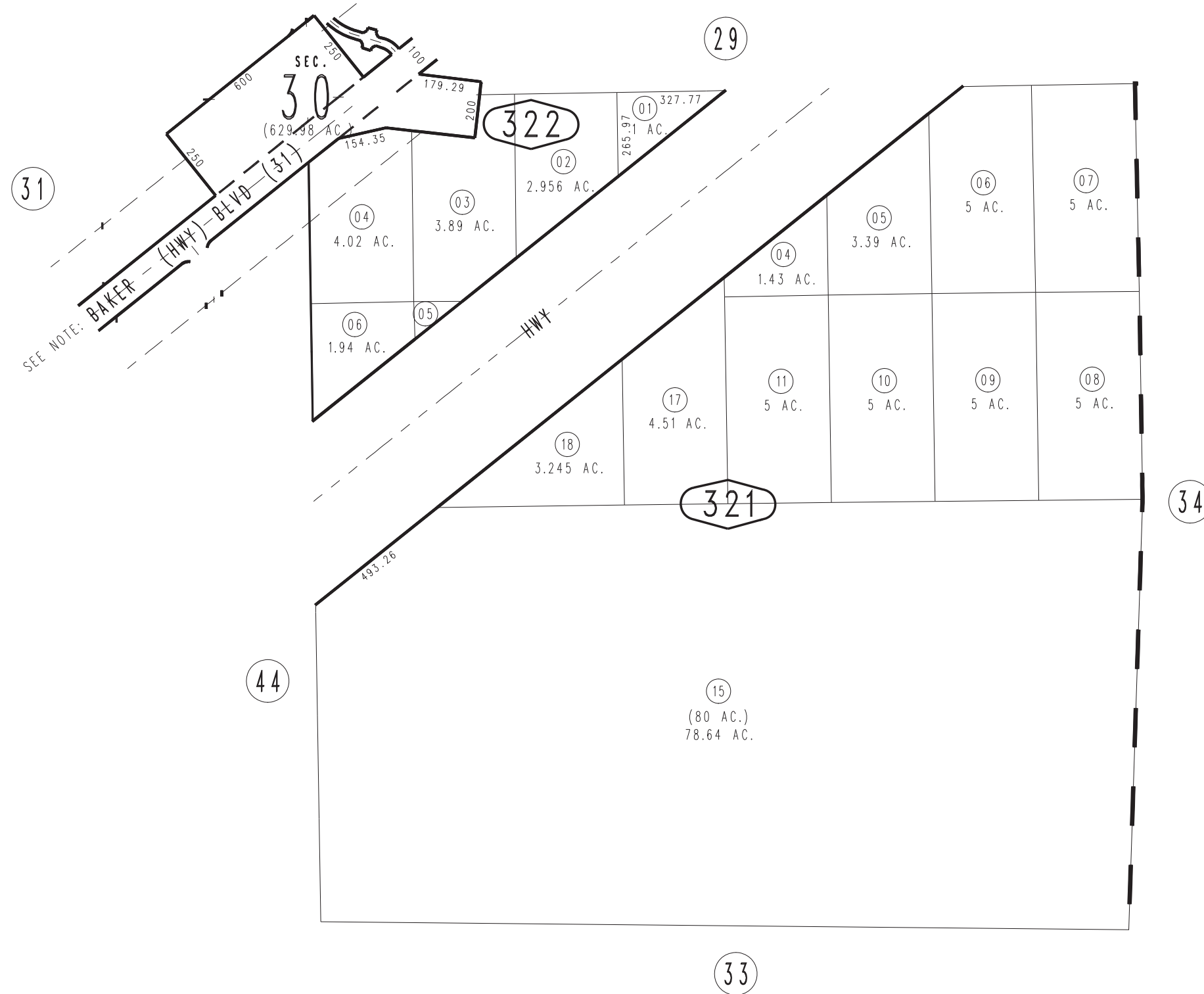


THIS MAP IS FOR THE PURPOSE
OF AD VALOREM TAXATION ONLY.

S.E.1/4, Fractional Sec.30, T.14N.,R.9E., S.B.B.&M.

Baker Unified
Tax Rate Area
55005

0544-32



NOTE: RTE 31 BY U.S. DEPT. OF THE INTERIOR, 1932
VIII-S.BD.-31-KLM-1 OF 1

REVISED