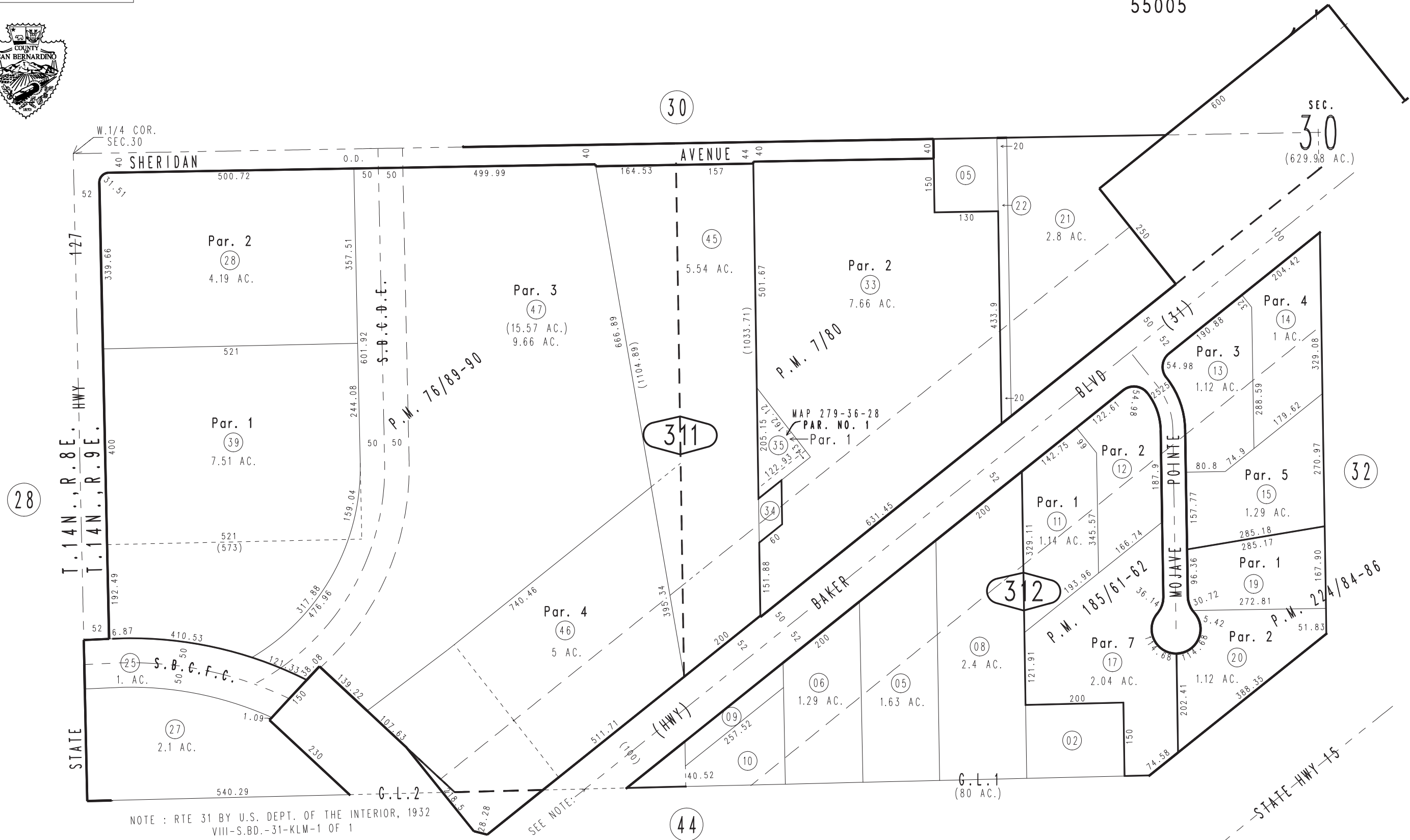


THIS MAP IS FOR THE PURPOSE OF AD VALOREM TAXATION ONLY.

N.1/2, S.W.1/4 Fractional Sec.30, T.14N.,R.9E., S.B.B.&M.

Baker Unified Tax Rate Area 55005

0544-31



NOTE : RTE 31 BY U.S. DEPT. OF THE INTERIOR, 1932 VIII-S.BD.-31-KLM-1 OF 1

SEE NOTE:

Parcel Map No. 18125, P.M. 224/84-86
Pln. Parcel Map No. 14892, P.M. 185/61-62
Parcel Map No. 4464, P.M. 46/89-90, Amend., P.M. 76/89-90
Parcel Map No. 858, P.M. 7/80

Assessor's Map Book 0544 Page 31 San Bernardino County

REVISED 02/08/23 KA