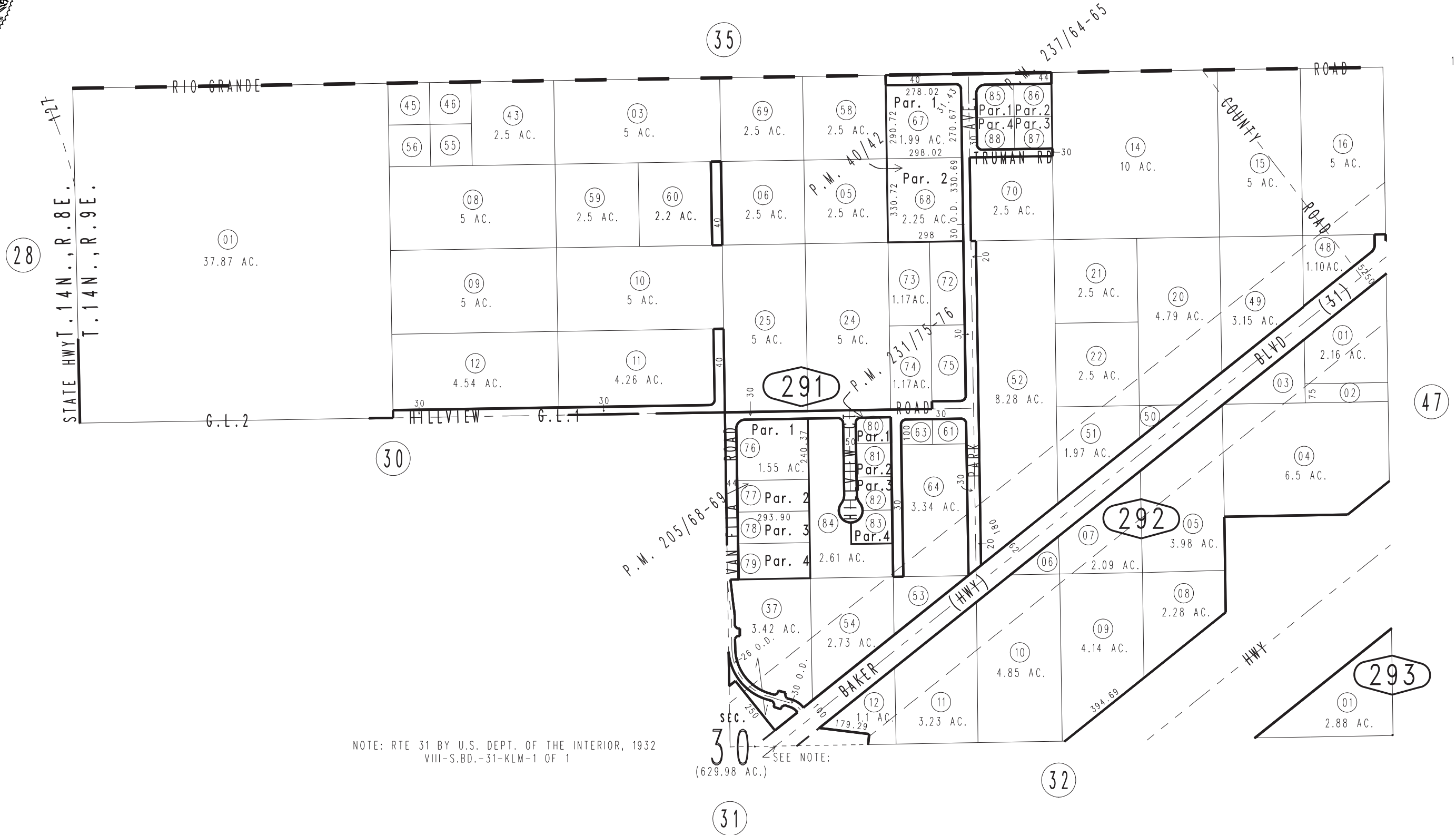


THIS MAP IS FOR THE PURPOSE OF AD VALOREM TAXATION ONLY.

Ptn. N.1/2 Fractional Sec.30, T.14N.,R.9E., S.B.B.&M.

Baker Unified Tax Rate Area 55005

0544-29



NOTE: RTE 31 BY U.S. DEPT. OF THE INTERIOR, 1932 VIII-S.BD.-31-KLM-1 OF 1

SEE NOTE: (629.98 AC.)

Parcel Map No. 18756, P.M. 237/64-65
 Parcel Map No. 18737, P.M. 231/75-76
 Parcel Map No. 16343, P.M. 205/68-69
 Parcel Map No. 4247, P.M. 40/42

Assessor's Map
 Book 0544 Page 29
 San Bernardino County

REVISED
 01/21/09 LH
 01/27/10 LH
 01/03/11 LH