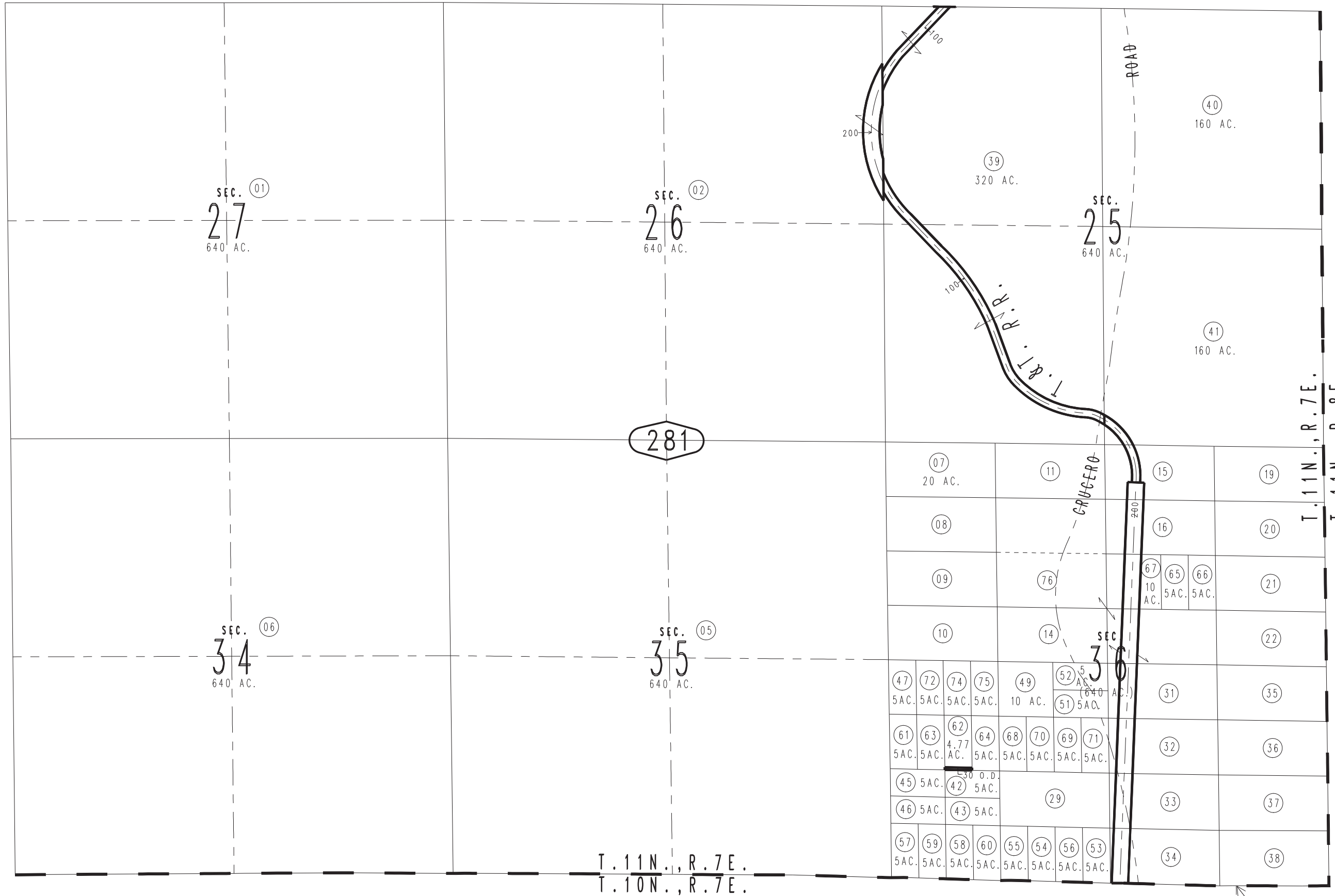


THIS MAP IS FOR THE PURPOSE
OF AD VALOREM TAXATION ONLY.

Sec.25,26,27,34,35,36., T.11N.,R.7E., S.B.B.&M.

Baker Unified
Tax Rate Area
55003

0542-28



23

281

0553
01

0552
08

0552
20

REVISED
03/04/22 KC

June 2005

Assessor's Map
Book 0542 Page 28
San Bernardino County

N.E. COR. FRACTIONAL
SEC.1 T.10N.,R.7E. S.B.B.&M.