

THIS MAP IS FOR THE PURPOSE OF AD VALOREM TAXATION ONLY.

0543  
31

# Sec.8,9 & Fractional Sec.4,5,6 & Ptn. Fractional Sec.7

## T.11N.,R.7E., S.B.B.&M.

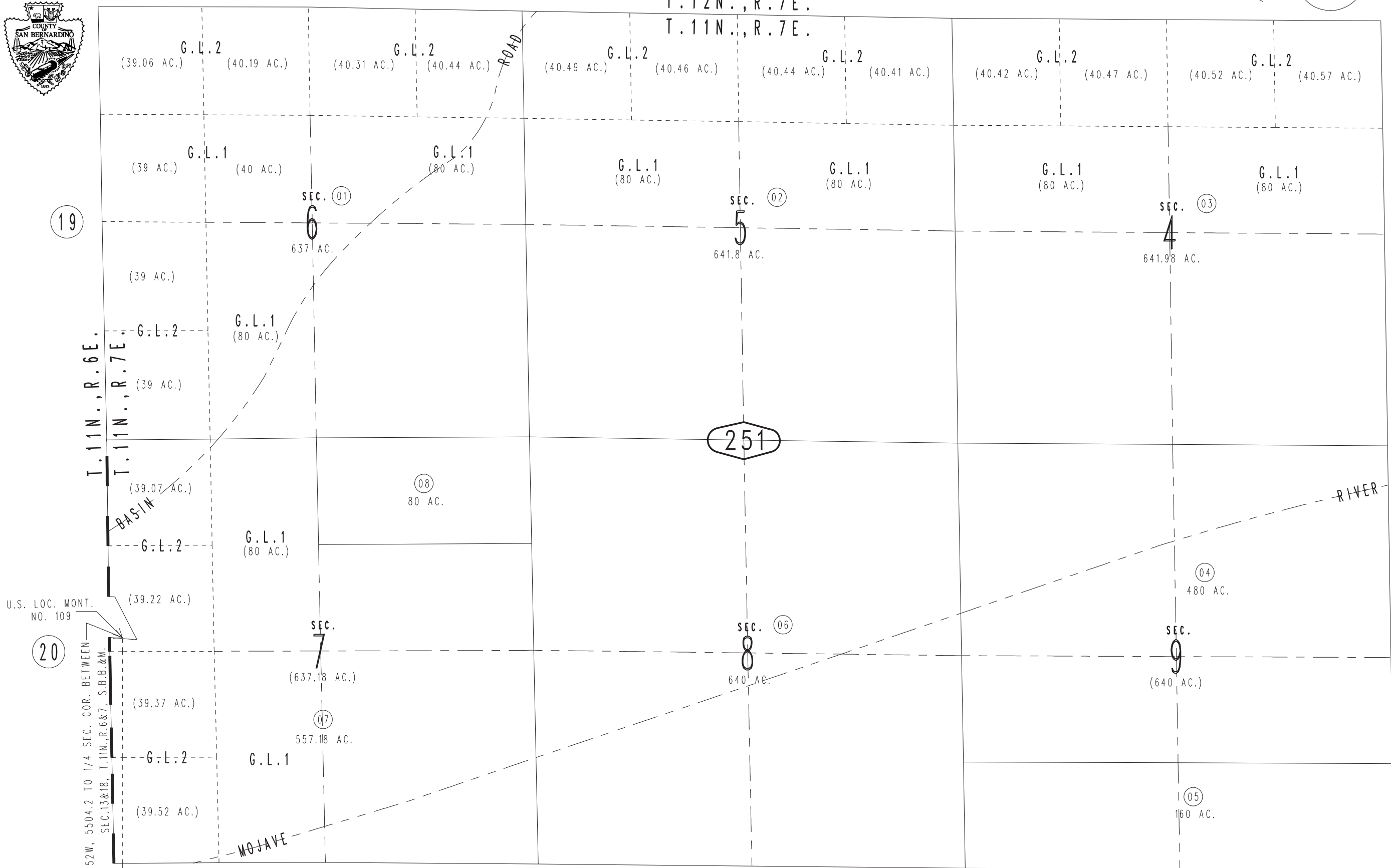
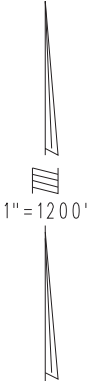
### T.12N.,R.7E.

### T.11N.,R.7E.

Baker Unified  
Tax Rate Area  
55003

0543  
17

0542-25



19

26

20

251

24

U.S. LOC. MONT.  
NO. 109

T.11N.,R.6E.  
T.11N.,R.7E.

S01-52W, 5504.2 TO 1/4 SEC. COR. BETWEEN  
SEC.13&18, T.11N.,R.6&7, S.B.B.&M.

MOJAVE

June 2005

Assessor's Map  
Book 0542 Page 25  
San Bernardino County

REVISED  
11/09/10 GW-MC