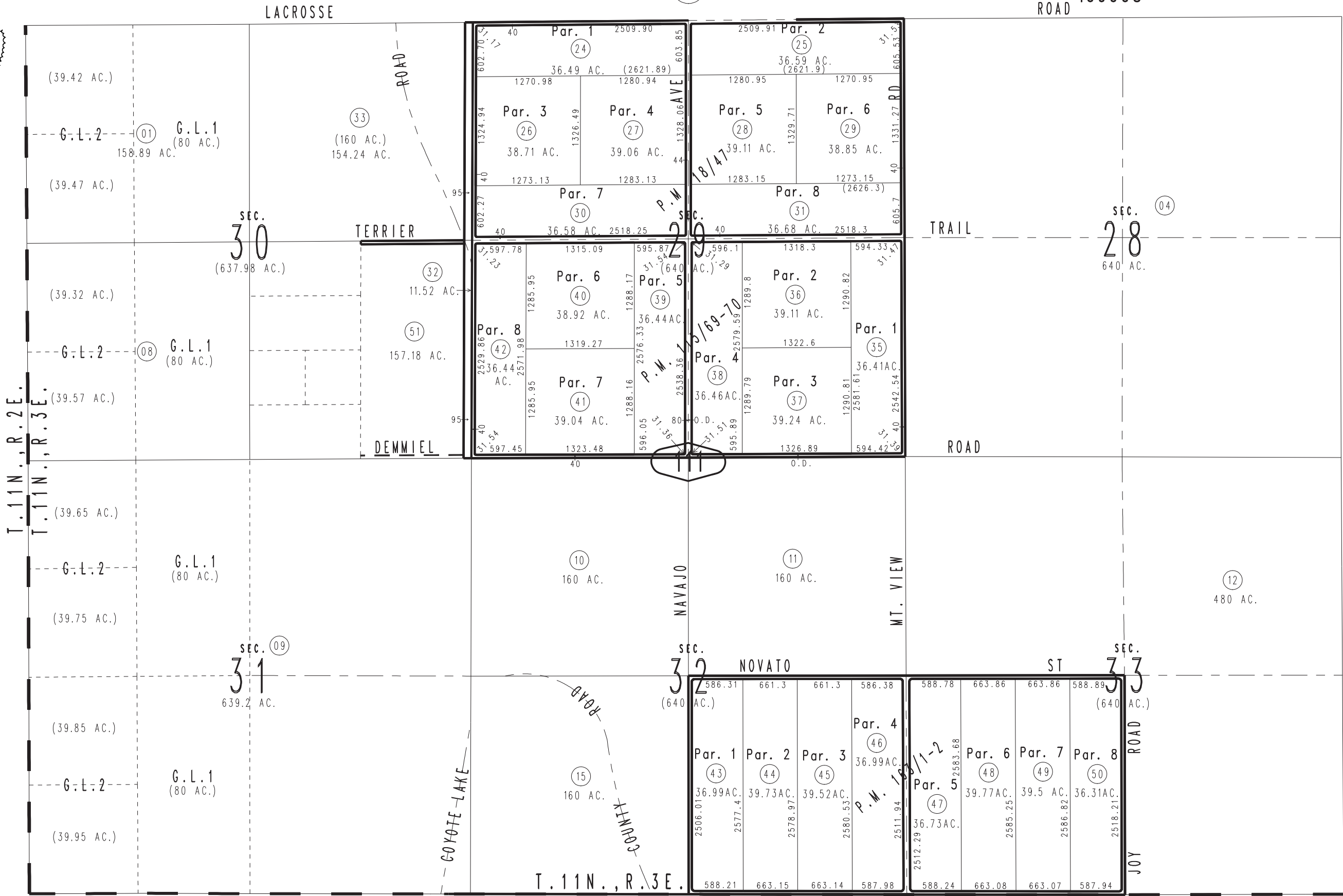


THIS MAP IS FOR THE PURPOSE OF AD VALOREM TAXATION ONLY.

Sec.28,29,32&33, & Fractional Sec.30&31, T.11N.,R.3E., S.B.B.&M.

Silver Valley Unified 0540-11  
Tax Rate Area  
109008



Pln. Parcel Map No. 13518, P.M. 163/1-2  
Parcel Map No. 10324, P.M. 115/69-70  
Parcel Map No. 1938, P.M. 18/47

0539  
08

0539  
09

Assessor's Map  
Book 0540 Page 11  
San Bernardino County

REVISED  
09/14/23 KA