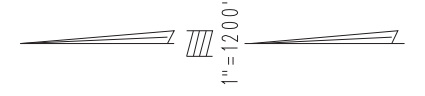


THIS MAP IS FOR THE PURPOSE OF AD VALOREM TAXATION ONLY.

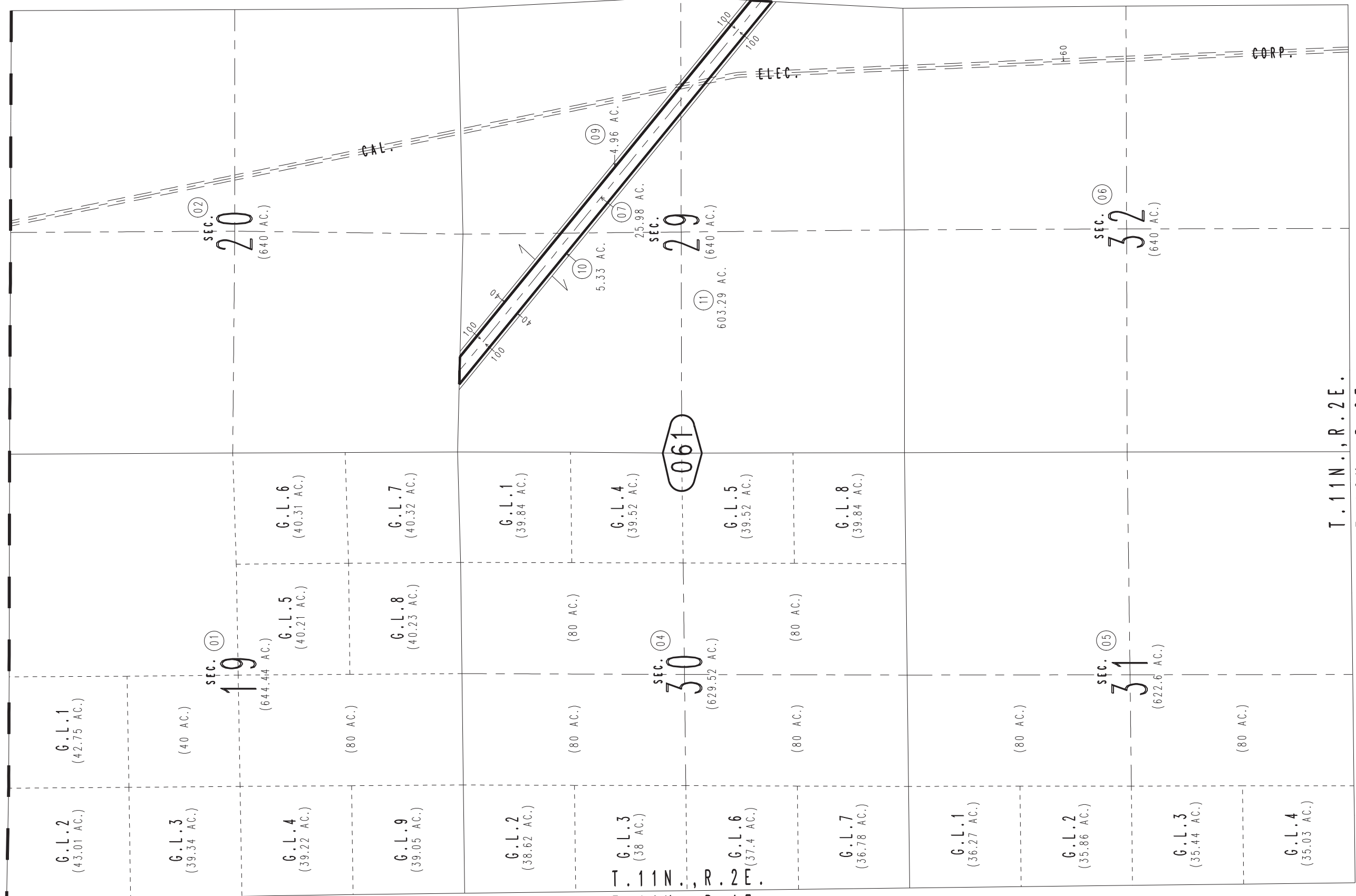


Sec.20,29,32, & Fractional Sec.19,30,&31, T.11N.,R.2E., S.B.B.&M.

Silver Valley Unified Tax Rate Area 109075 0540-06



0518 / 24



June 2005

T. 11N., R. 2E.  
T. 11N., R. 1E.

Assessor's Map  
Book 0540 Page 06  
San Bernardino County

REVISED