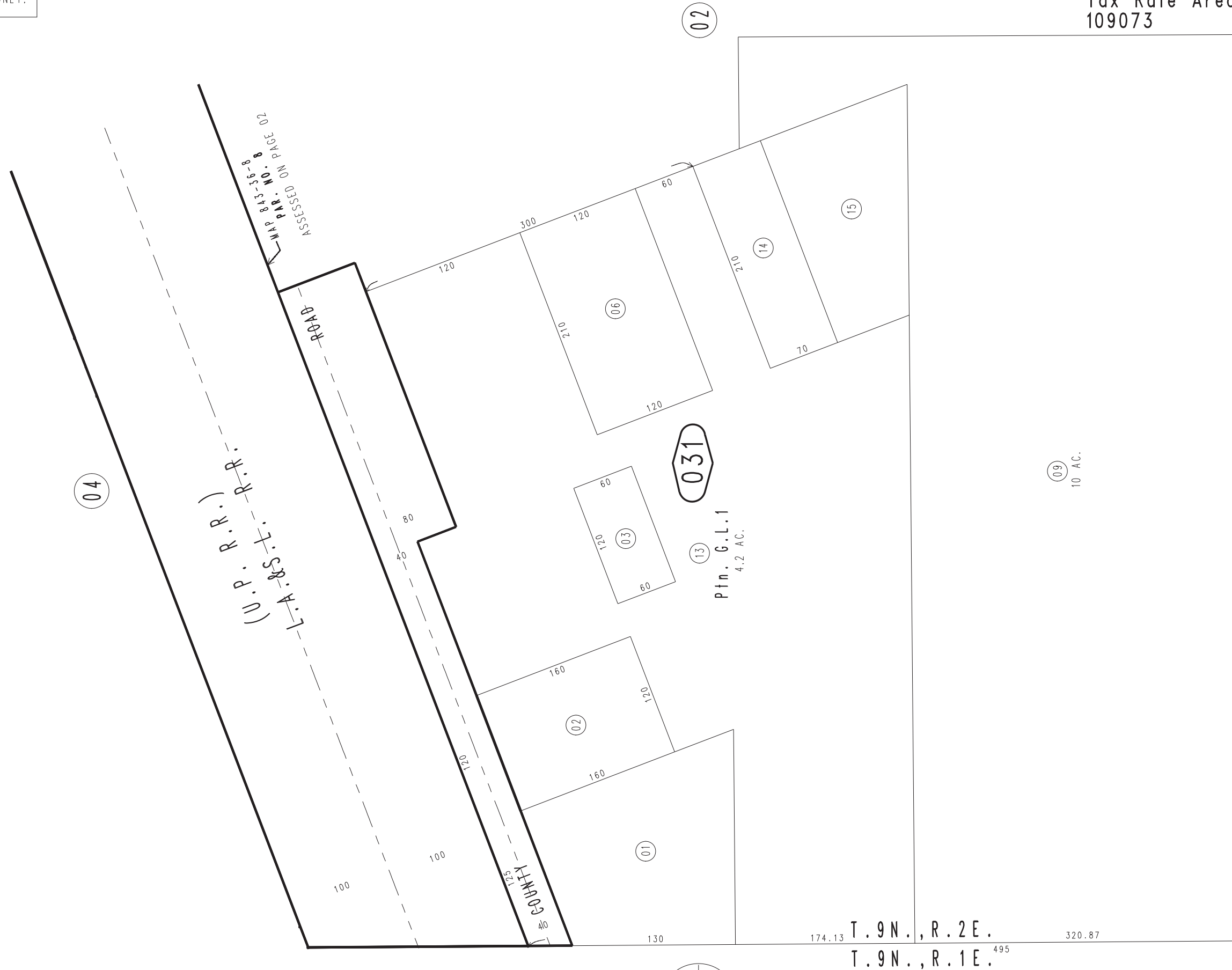


THIS MAP IS FOR THE PURPOSE  
OF AD VALOREM TAXATION ONLY.

Ptn. Fractional Sec.6, T.9N.,R.2E., S.B.B.&M.

Silver Valley Unified 0538-03  
Tax Rate Area  
109073



04

U.P. R.R.  
L.A. & S.F. CO. R.R.

ASSESSED ON PAGE  
8-93-148-8  
MAP NO. 8-93-148-8

ROAD

COUNTY  
HIGHWAY  
125

03  
60  
120  
60

031

13  
Ptn. G.L.1  
4.2 AC.

06  
120  
210  
120  
60

14  
210  
70

15

09  
10 AC.

01

W. 1/4 COR. FRACTIONAL  
SEC. 6 T. 9N., R. 2E.

0537  
19

T. 9N., R. 2E.  
T. 9N., R. 1E.

Assessor's Map  
Book 0538 Page 03  
San Bernardino County