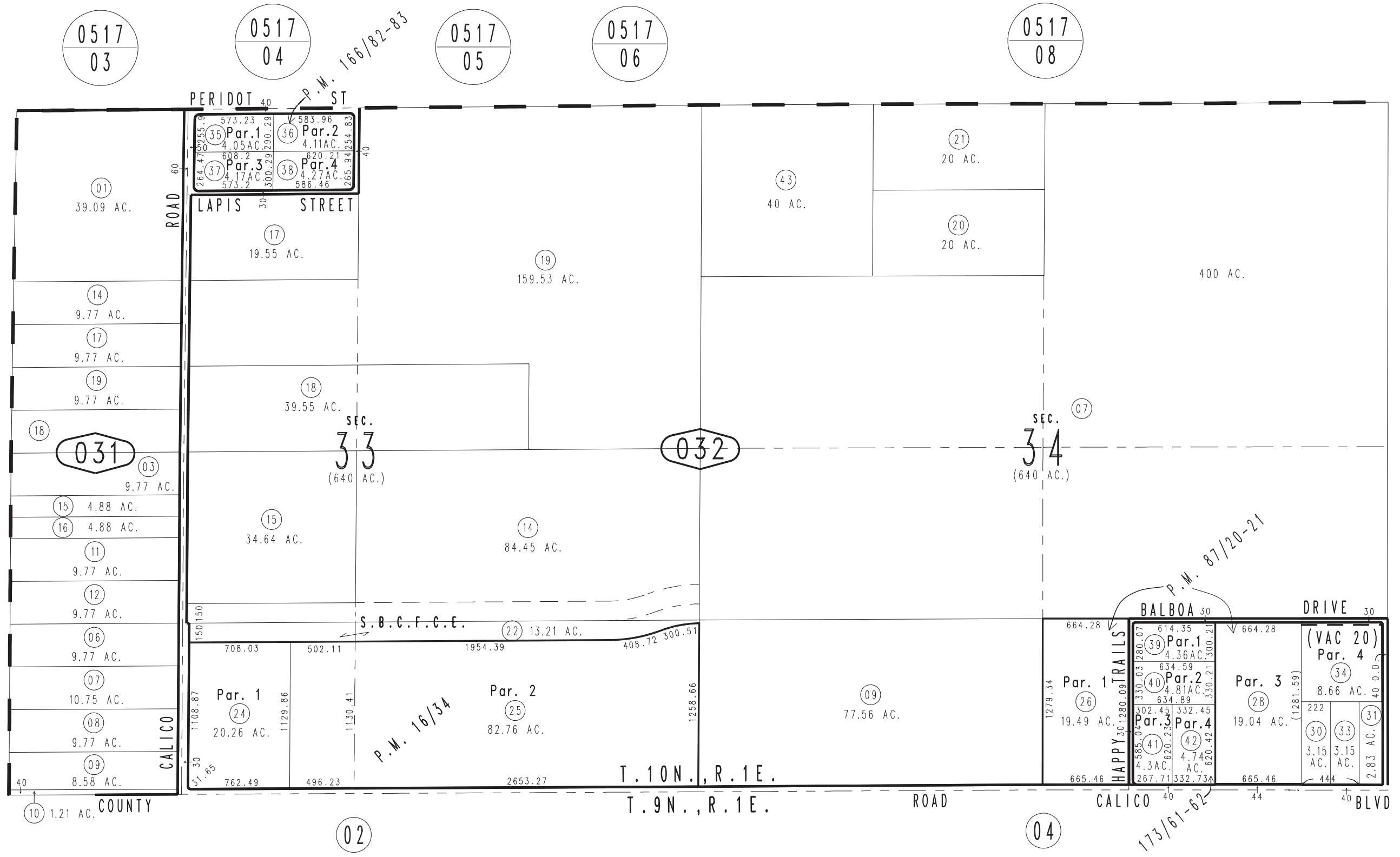
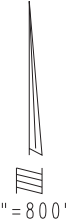


THIS MAP IS FOR THE PURPOSE OF AD VALOREM TAXATION ONLY.

Sec.33&34, T.10N.,R.1E., S.B.B.&M.

Silver Valley Unified 0537-03
Tax Rate Area
109073



Parcel Map No. 12785, P.M. 173/61-62
 Parcel Map No. 13799, P.M. 166/82-83
 Parcel Map No. 8096, P.M. 87/20-21
 Parcel Map No. 1634, P.M. 16/34

July 2005

Assessor's Map
 Book 0537 Page 03
 San Bernardino County

REVISED
 03/20/18 KC