

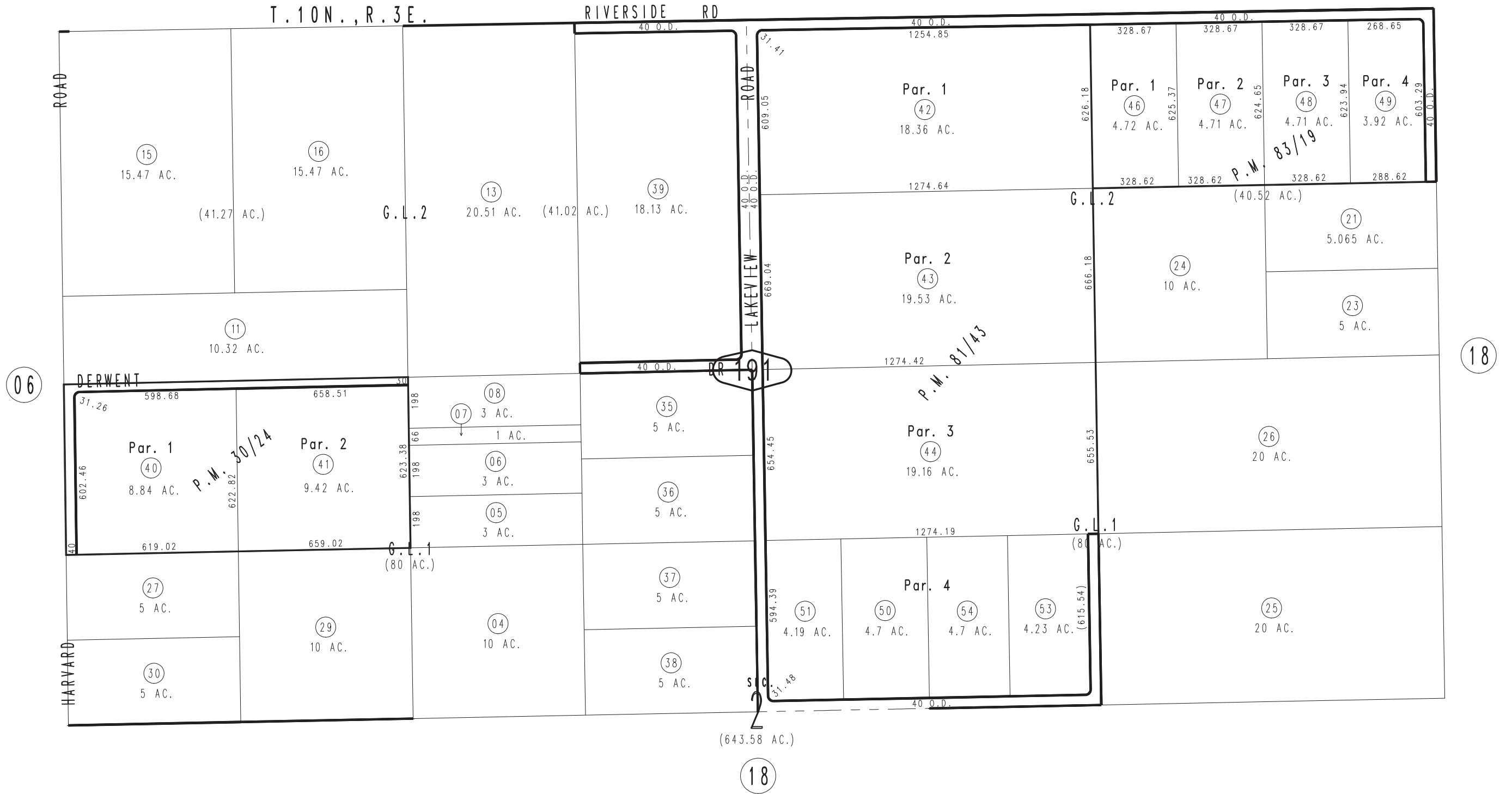
THIS MAP IS FOR THE PURPOSE OF AD VALOREM TAXATION ONLY.

N.1/2 Fractional Sec.2, T.9N.,R.3E., S.B.B.&M.

Silver Valley Unified 0532-19
Tax Rate Area
109043



0533
04



June 2005

Parcel Map No. 8085, P.M. 83/19
Parcel Map No. 7923, P.M. 81/43
Parcel Map No. 3414, P.M. 30/24

Assessor's Map
Book 0532 Page 19
San Bernardino County

REVISED
10/29/10 GW-MC
06/23/11 GW