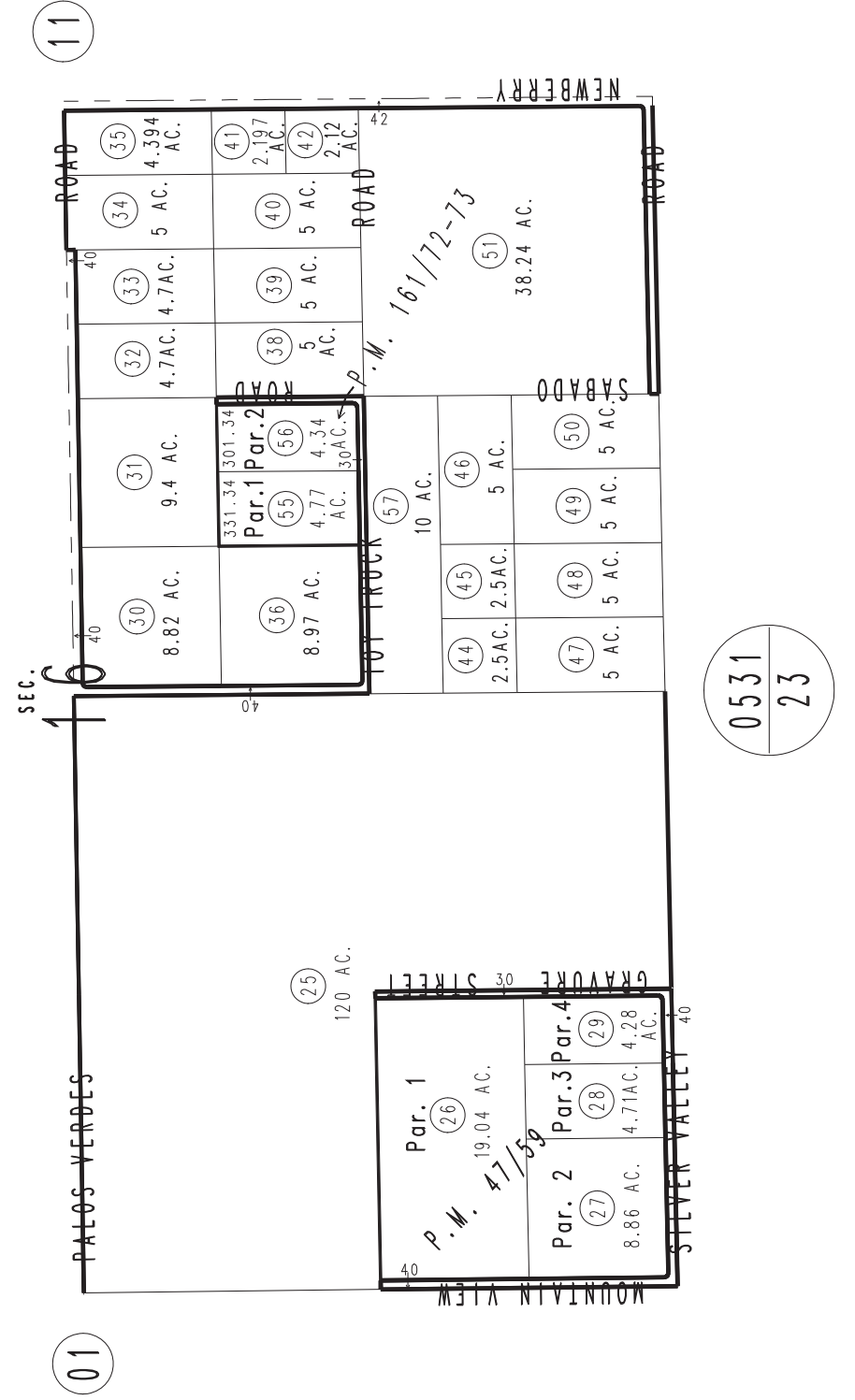
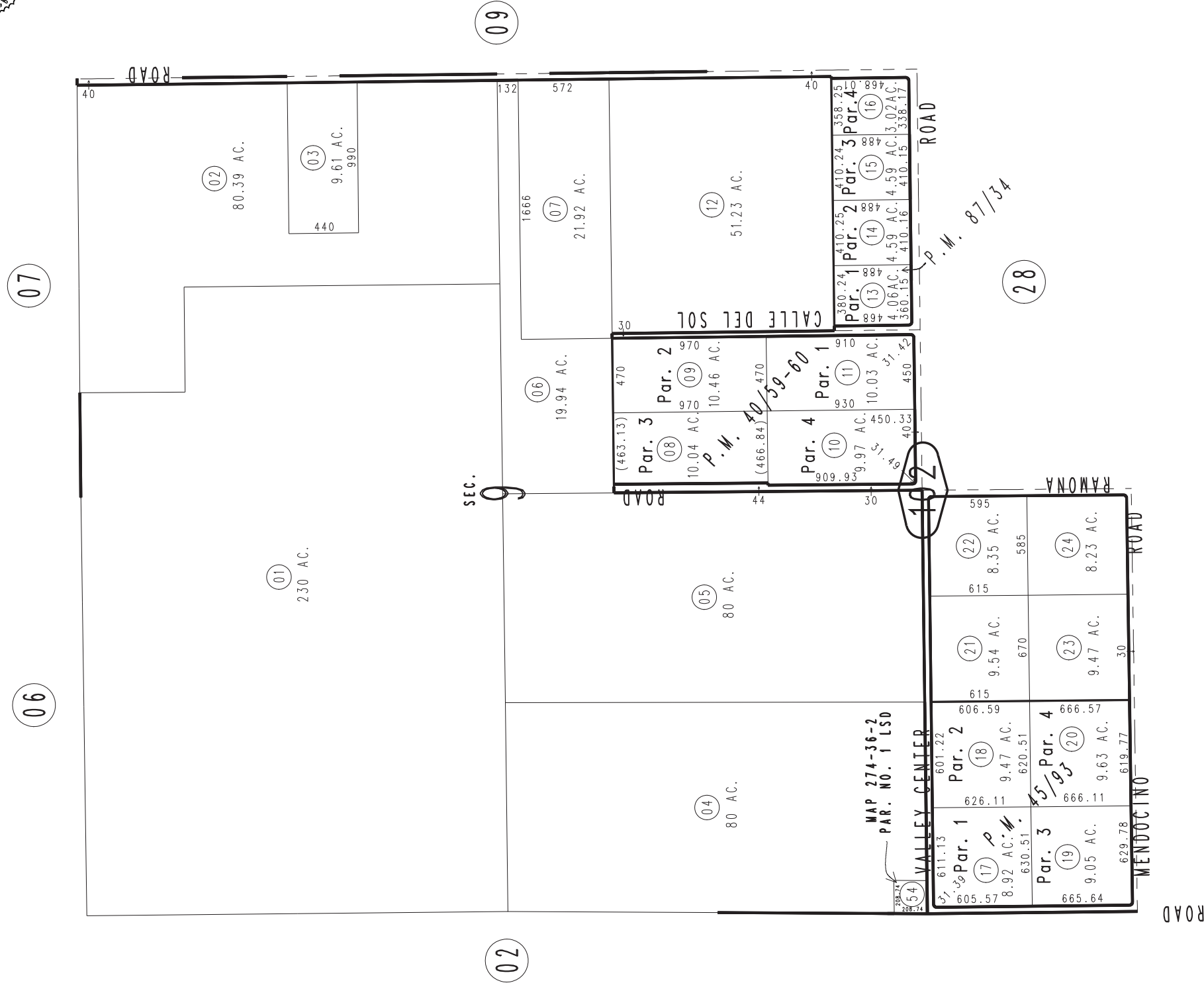
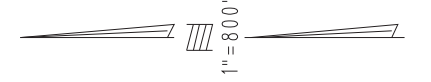


THIS MAP IS FOR THE PURPOSE OF AD VALOREM TAXATION ONLY.

Sec.9 & Ptn. Sec.16, T.9N.,R.3E., S.B.B.&M.

Silver Valley Unified 0532-10
Tax Rate Area
109043



Parcel Map No. 11840, P.M. 161/72-73
 Parcel Map No. 4935, P.M. 47/59
 Parcel Map No. 8195, P.M. 87/34
 Parcel Map No. 4707, P.M. 45/93
 Parcel Map No. 4036, P.M. 40/59-60

June 2005

Assessor's Map
 Book 0532 Page 10
 San Bernardino County

REVISED
 11/20/07 KC
 06/26/08 TY

0531
23