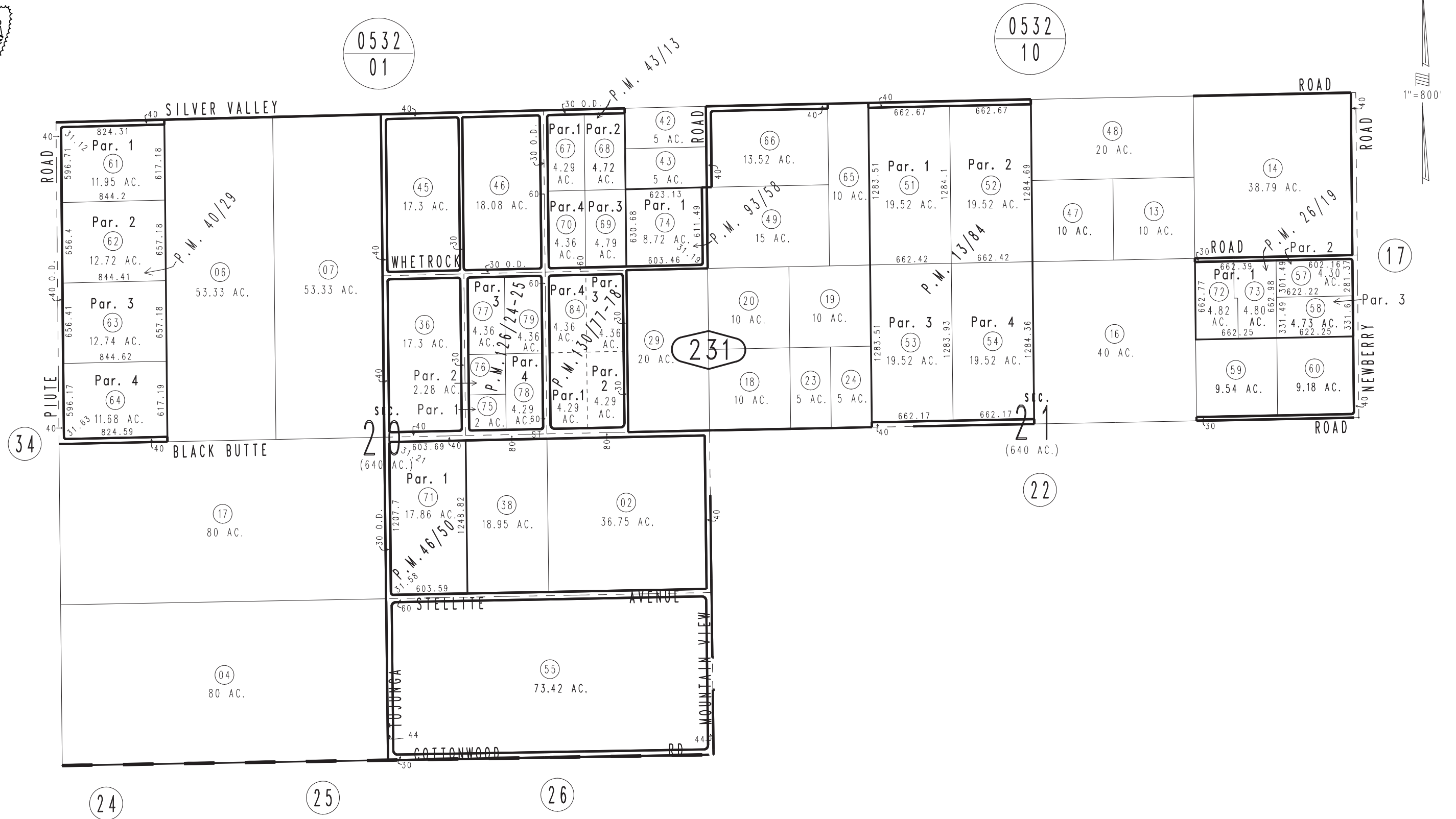


THIS MAP IS FOR THE PURPOSE OF AD VALOREM TAXATION ONLY.

Sec.20 & N.1/2 Sec.21, T.9N.,R.3E., S.B.B.&M.

Silver Valley Unified 0531 - 23
Tax Rate Area
109043



- Parcel Map No. 4786, P.M. 46/50
- Parcel Map No. 4103, P.M. 43/13
- Parcel Map No. 4268, P.M. 40/29
- Parcel Map No. 2968, P.M. 26/19
- Parcel Map No. 1520, P.M. 13/84
- Parcel Map No. 11718, P.M. 130/77-78
- Parcel Map No. 11072, P.M. 126/24-25
- Parcel Map No. 8564, P.M. 93/58

June 2005

Assessor's Map
Book 0531 Page 23
San Bernardino County

REVISED
01/18/18 BK