

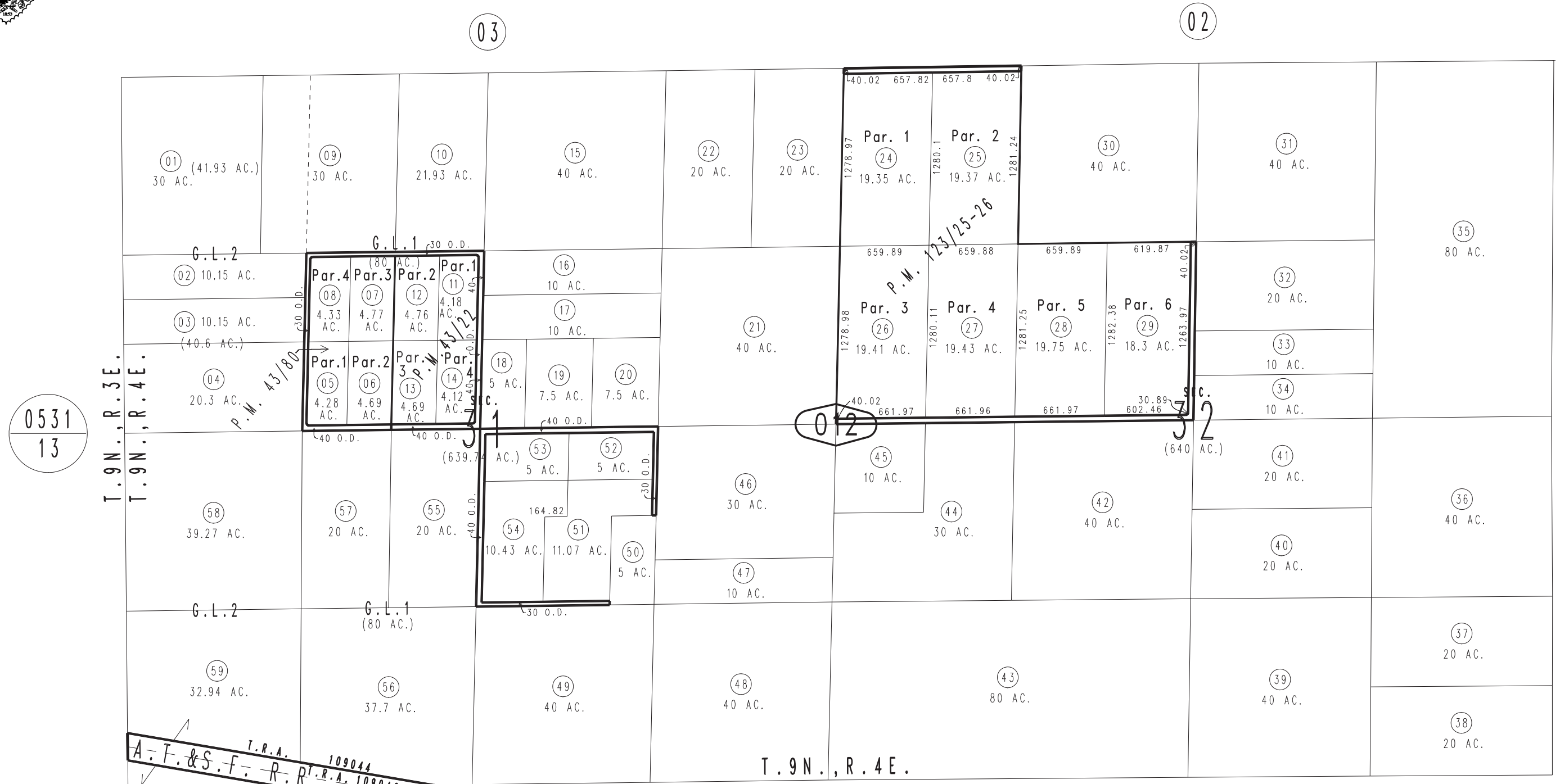
THIS MAP IS FOR THE PURPOSE OF AD VALOREM TAXATION ONLY.

Fractional Sec.31 & Sec.32, T.9N.,R.4E., S.B.B.&M.

Silver Valley Unified 0530-01
Tax Rate Area
109044,109046



1"=800'



0531
13

0529
13

0529
14

0529
15

MAP 804-36-46
PTN. PAR. NO. 1
ASSESSED IN BOOK 0529
ON PAGE 15

Parcel Map No. 10676, P.M. 123/25-26
Parcel Map No. 4102, P.M. 43/80
Parcel Map No. 4099, P.M. 43/22

Assessor's Map
Book 0530 Page 01
San Bernardino County