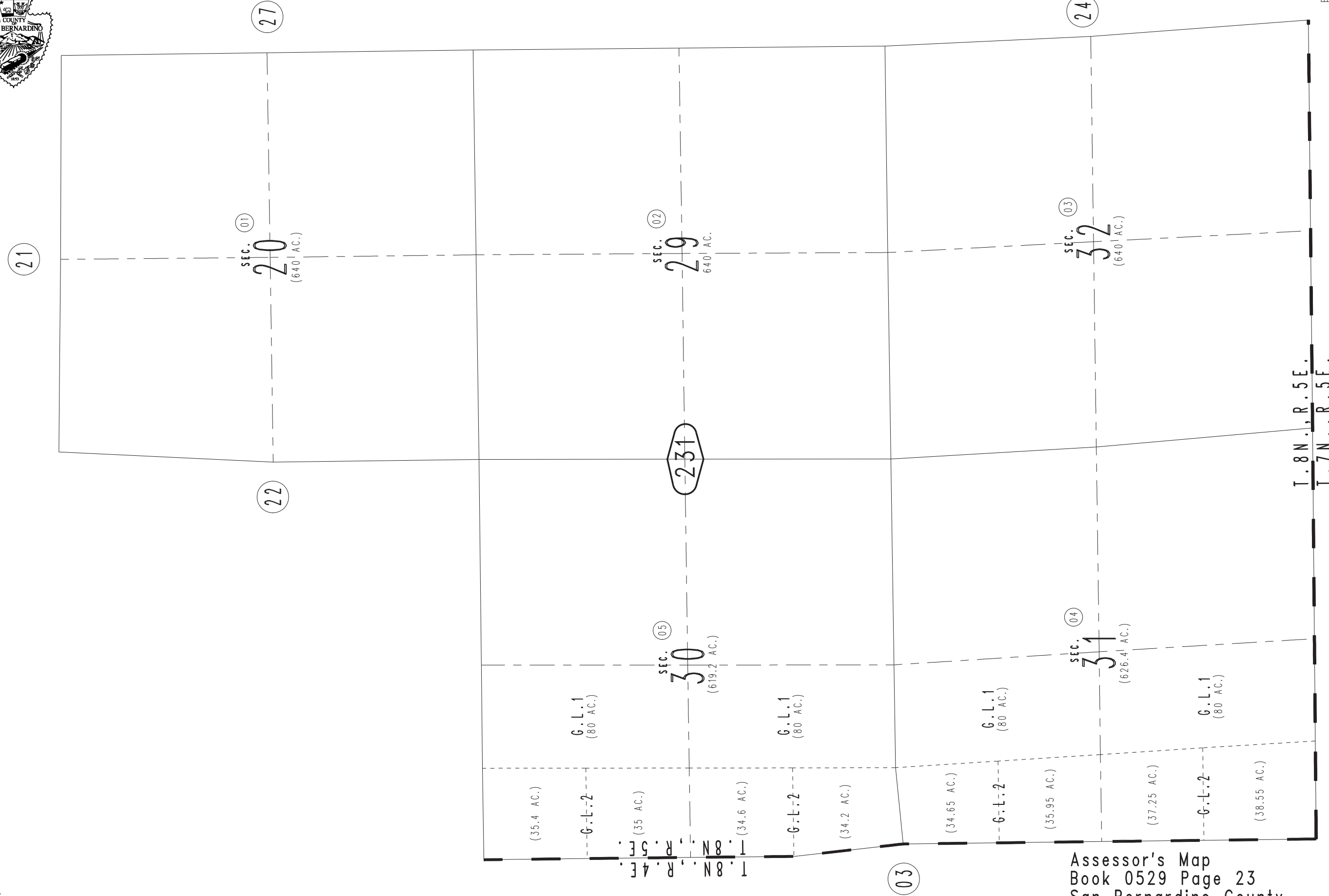
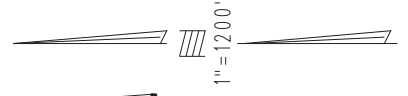


THIS MAP IS FOR THE PURPOSE
OF AD VALOREM TAXATION ONLY.

Sec.20,29,&32 & Fractional Sec.30&31, T.8N.,R.5E., S.B.B.&M.

Silver Valley Unified 0529-23
Tax Rate Area
109091



0527
07

Assessor's Map
Book 0529 Page 23
San Bernardino County

REVISED
04/28/09 GW