

THIS MAP IS FOR THE PURPOSE OF AD VALOREM TAXATION ONLY.

Fractional Sec.19,30,31 & Sec.20,29&32, T.8N.,R.4E., S.B.B.&M.

Silver Valley Unified Tax Rate Area 109092 0529-01



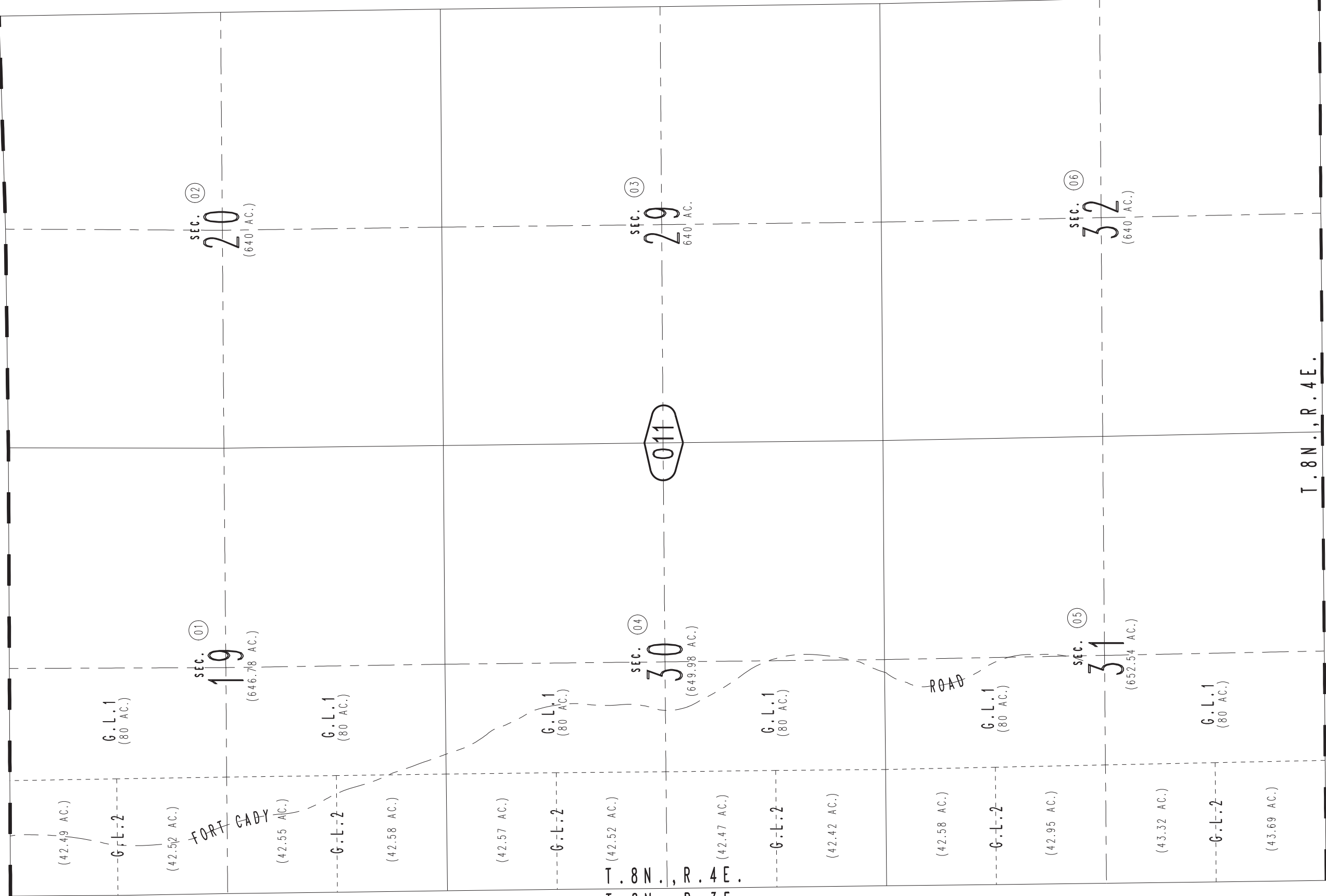
1"=1200'

07

0528 / 03

0528 / 02

0527 / 06



July 2005

Assessor's Map Book 0529 Page 01 San Bernardino County

REVISED 04/27/09 GW