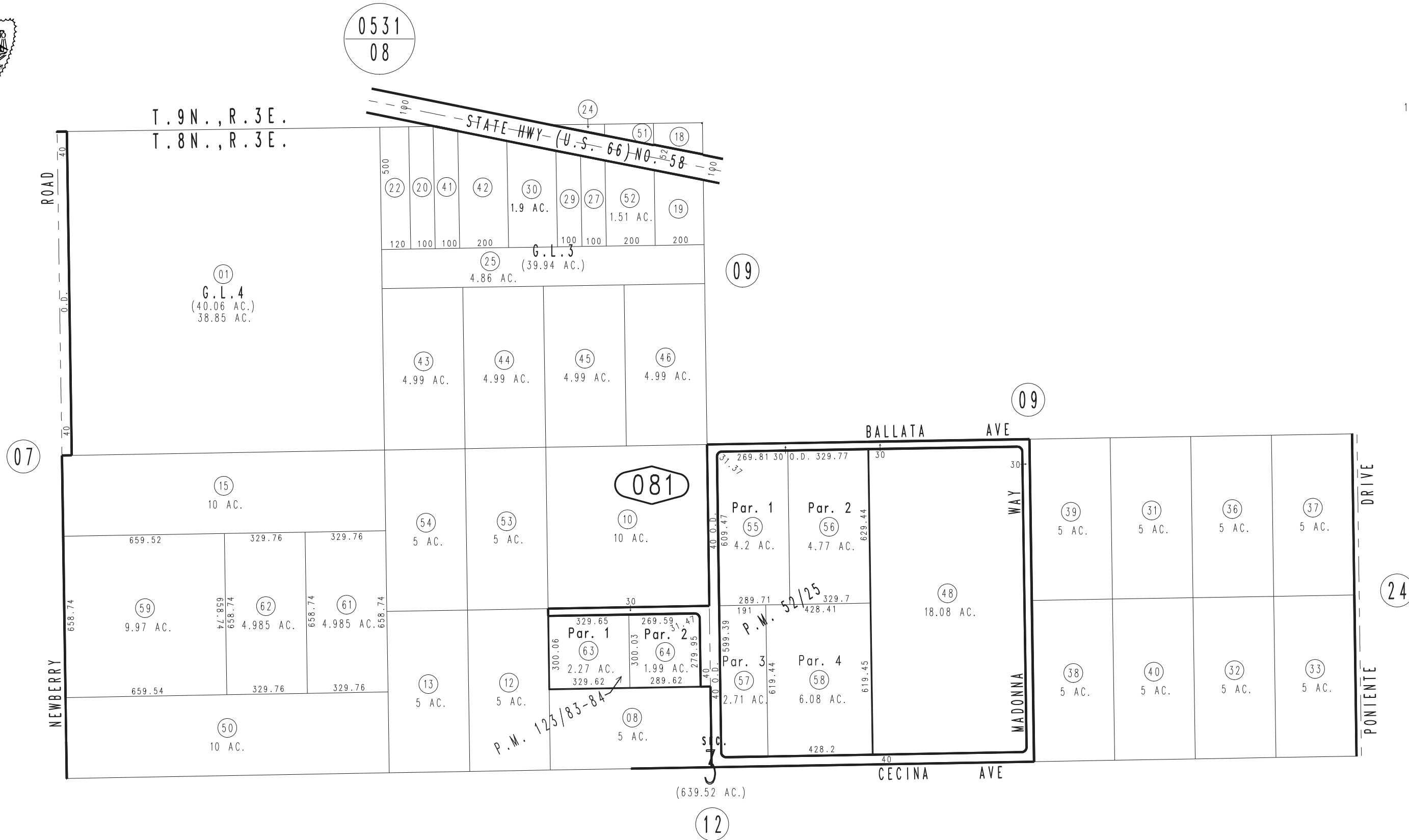


THIS MAP IS FOR THE PURPOSE OF AD VALOREM TAXATION ONLY.

Ptn. N.1/2 Fractional Sec.3, T.8N.,R.3E., S.B.B.&M.

Silver Valley Unified 0528-08  
Tax Rate Area  
109044



0531  
08

T.9N.,R.3E.  
T.8N.,R.3E.

STATE HWY (U.S. 66) NO. 58

01  
G.L. 4  
(40.06 AC.)  
38.85 AC.

25  
G.L. 3  
(39.94 AC.)  
4.86 AC.

081

Par. 1  
55  
4.2 AC.

Par. 2  
56  
4.77 AC.

Par. 1  
63  
2.27 AC.

Par. 2  
64  
1.99 AC.

Par. 3  
57  
2.71 AC.

Par. 4  
58  
6.08 AC.

48  
18.08 AC.

15  
10 AC.

54  
5 AC.

53  
5 AC.

10  
10 AC.

39  
5 AC.

31  
5 AC.

36  
5 AC.

37  
5 AC.

59  
9.97 AC.

62  
4.985 AC.

61  
4.985 AC.

13  
5 AC.

12  
5 AC.

08  
5 AC.

38  
5 AC.

40  
5 AC.

32  
5 AC.

33  
5 AC.

50  
10 AC.

(639.52 AC.)

12