

THIS MAP IS FOR THE PURPOSE OF AD VALOREM TAXATION ONLY.



Fractional Sec.1,2 & Sec.11,12,13,14, T.11N.,R.2E., S.B.B.&M.

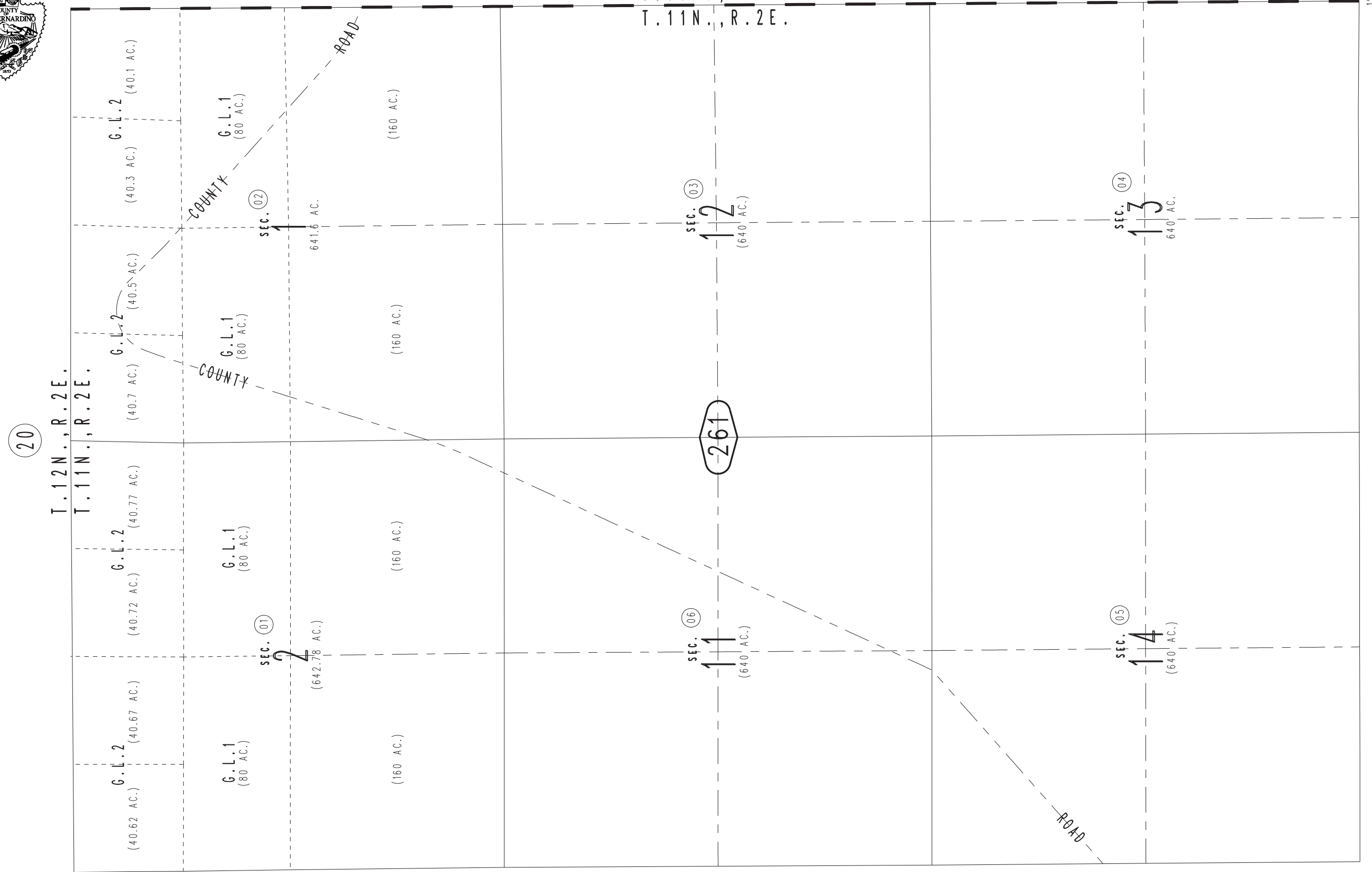
Silver Valley Unified Tax Rate Area 109031

0518 - 26

0540 / 13

0540 / 12

1" = 1200'



20

T.12N., R.2E.  
T.11N., R.2E.

G.L.2 (40.62 AC.)  
G.L.2 (40.72 AC.)  
G.L.2 (40.7 AC.)  
G.L.2 (40.5 AC.)  
G.L.2 (40.3 AC.)  
G.L.2 (40.1 AC.)

SEC. 01  
SEC. 02

G.L.1 (80 AC.)  
G.L.1 (80 AC.)  
G.L.1 (80 AC.)  
G.L.1 (80 AC.)

642.78 AC.

641.6 AC.

(160 AC.)

(160 AC.)

(160 AC.)

(160 AC.)

SEC. 06

SEC. 03

11

12

261

(640 AC.)

(640 AC.)

SEC. 05

SEC. 04

14

13

(640 AC.)

640 AC.

ROAD

COUNTY ROAD

COUNTY

T.11N., R.3E.  
T.11N., R.2E.

0540 / 10