

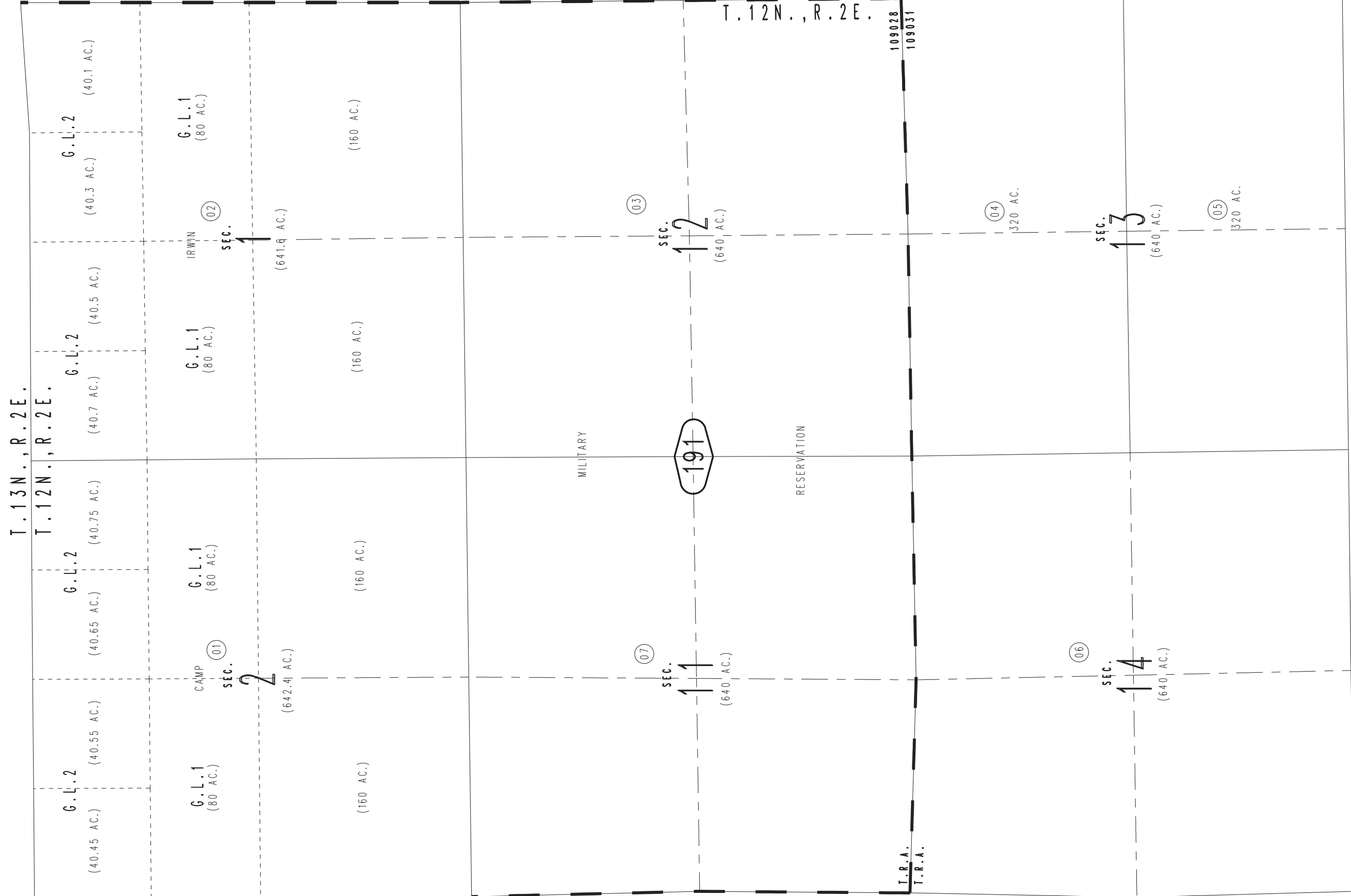
THIS MAP IS FOR THE PURPOSE OF AD VALOREM TAXATION ONLY.



Fractional Sec.1,2 & Sec.11,12,13,14, T.12N.,R.2E., S.B.B.&M.

Silver Valley Unified Tax Rate Area 109031,109028 0518 - 19

0519 / 09



18

20

Assessor's Map Book 0518 Page 19 San Bernardino County